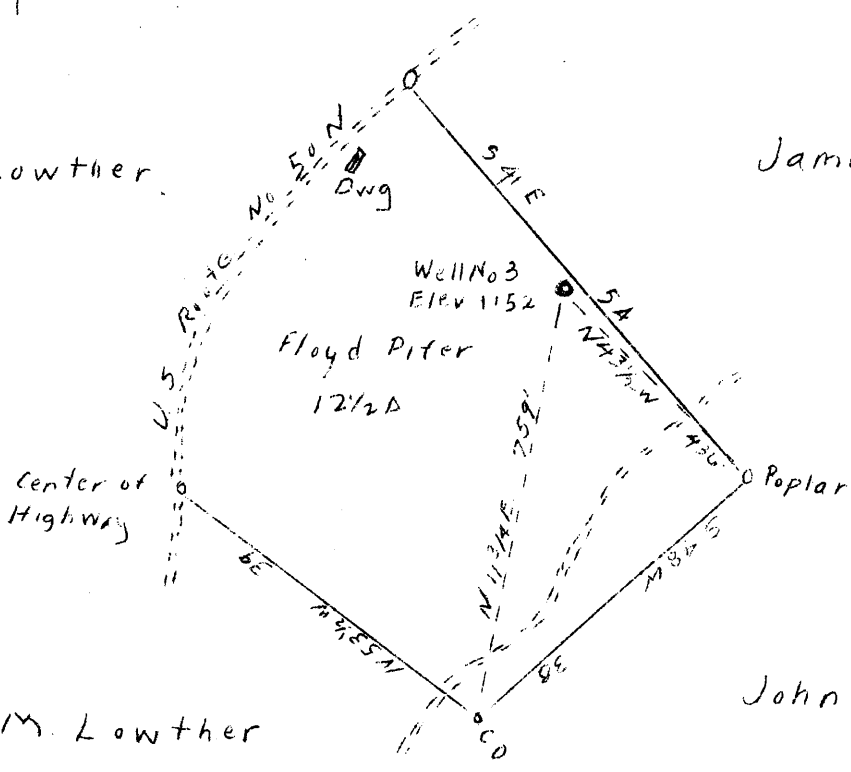


A.M. Lowther.

James Newbrough



A.M. Lowther

John Ross

2.9 W  
2.57 Q

SEP 10 1946

ABANDONMENT X

COMPANY A. C. MERCER  
 ADDRESS ELLENEORO, W. VA.  
 FARM FLOYD PIFER  
 TRACT ACRES 12 1/2 LEASE NO. \_\_\_\_\_  
 WELL (FARM) NO. 3 SERIAL NO. \_\_\_\_\_  
 ELEVATION (SPIRIT LEVEL) 1152  
 QUADRANGLE ST. MARYS  
 COUNTY RITCHIE DISTRICT GRANT  
 ENGINEER A. K. WESTFALL  
 ENGINEER'S REG. NO. \_\_\_\_\_  
 FILE NO. \_\_\_\_\_ DRAWING NO. \_\_\_\_\_  
 DATE 8/26/46 SCALE 1" 20 POLES

STATE OF WEST VIRGINIA  
 DEPARTMENT OF MINES  
 OIL AND GAS DIVISION  
 CHARLESTON  
 WELL LOCATION MAP  
 FILE NO. RIT-761A

+ DENOTES LOCATION OF WELL ON U.S. TOPOGRAPHIC MAPS, SCALE 1 TO 62,500 LATITUDE AND LONGITUDE LINES BEING REPRESENTED BY BORDER LINES AS SHOWN.  
 - DENOTES ONE INCH SPACES ON BORDER LINE OF ORIGINAL TRACING.

64