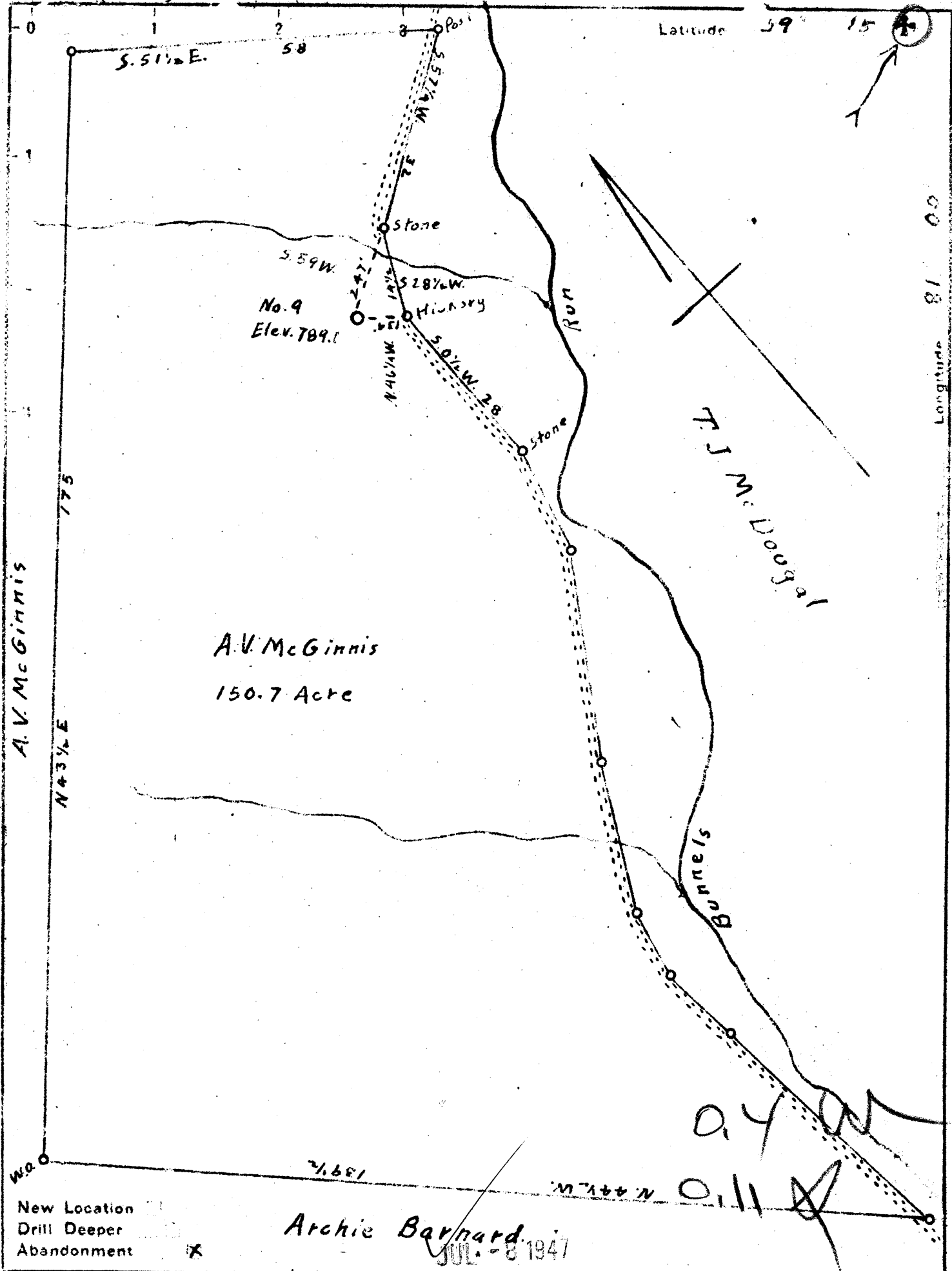


Benj McGinnis

Latitude 39° 15'

Longitude 81° 00'



A.V. McGinnis  
150.7 Acre

Archie Barnard  
JUL - 8 1947

New Location   
Drill Deeper   
Abandonment

Company Chalmers Oil & Gas Co.  
 Address Baltimore Md.  
 Farm A.V. McGinnis  
 Tract \_\_\_\_\_ Acres 150.7 Lease No. \_\_\_\_\_  
 Well (Farm) No. 9 Serial No. \_\_\_\_\_  
 Elevation (Spirit Level) 789.1  
 Quadrangle Harrisville  
 County Ritchie District Clay  
 Engineer A. K. Westfall  
 Engineer's Registration No. \_\_\_\_\_  
 File No. \_\_\_\_\_ Drawing No. \_\_\_\_\_  
 Date June 19, 1947 Scale 1" = 20 Poles

STATE OF WEST VIRGINIA  
DEPARTMENT OF MINES  
OIL AND GAS DIVISION  
CHARLESTON

WELL LOCATION MAP  
FILE NO. Rit-789-A

+ Denotes location of well on United States Topographic Maps, scale 1 to 62,500, latitude and longitude lines being represented by border lines as shown.

- Denotes one inch spaces on border line of original tracing.

A.V. MCGINNIS NO. 9 - CHALMERS OIL & GAS CO. - RIT 789-A



STATE OF WEST VIRGINIA  
DEPARTMENT OF MINES  
OIL AND GAS DIVISION

731

WELL RECORD

Permit No. RIT-789-A

Oil or Gas Well OIL  
(KIND)

Company Chalmers Oil & Gas Company  
 Address Procious, W. Va.  
 Farm A. V. McGinnis Acres 150  
 Location (waters) Bunnels Run  
 Well No. 9 Elev. 789  
 District Clay County Ritchie  
 The surface of tract is owned in fee by \_\_\_\_\_  
 Address \_\_\_\_\_  
 Mineral rights are owned by \_\_\_\_\_  
 Address \_\_\_\_\_  
 Drilling commenced \_\_\_\_\_  
 Drilling completed February 1925  
 Date Shot \_\_\_\_\_ From \_\_\_\_\_ To \_\_\_\_\_  
 With \_\_\_\_\_  
 Open Flow \_\_\_\_\_ /10ths Water in \_\_\_\_\_ Inch  
 \_\_\_\_\_ /10ths Merc. in \_\_\_\_\_ Inch  
 Volume \_\_\_\_\_ Cu. Ft.  
 Rock Pressure \_\_\_\_\_ lbs. \_\_\_\_\_ hrs.  
 Oil \_\_\_\_\_ bbls., 1st 24 hrs.  
 Fresh water \_\_\_\_\_ feet \_\_\_\_\_ feet  
 Salt water \_\_\_\_\_ feet \_\_\_\_\_ feet

Casing and Tubing	Used in Drilling	Left in Well	Packers
Size			Kind of Packer
16			
13			
10	160		Size of
8 1/4	980		
6 5/8	1690		Depth set
5 3/16			
3			Perf. top
2			Perf. bottom
Liners Used			Perf. top
			Perf. bottom

CASING CEMENTED \_\_\_\_\_ SIZE \_\_\_\_\_ No. Ft. \_\_\_\_\_ Date \_\_\_\_\_  
 COAL WAS ENCOUNTERED AT \_\_\_\_\_ FEET \_\_\_\_\_ INCHES  
 \_\_\_\_\_ FEET \_\_\_\_\_ INCHES \_\_\_\_\_ FEET \_\_\_\_\_ INCHES  
 \_\_\_\_\_ FEET \_\_\_\_\_ INCHES \_\_\_\_\_ FEET \_\_\_\_\_ INCHES

Formation	Color	Hard or Soft	Top	Bottom	Oil, Gas or Water	Depth Found	Remarks
Big Dunkard			980	995			
Gas sand			1200	1270			
1st salt			1300	1360			
2d salt			1450	1510			
Big lime			1690	1750			
Injun sand			1750	1815			
Squaw sand			1815	1861	Gas Oil	1821 1850	
This is a very old well and the above is all the record we have.							

*J. E. Kone*  
*Louis Swadley*

*Q*

Formation	Color	Hard or Soft	Top	Bottom	Oil, Gas or Water	Depth Found	Remarks

□ PLANT

□ School

Under

Date \_\_\_\_\_, 19\_\_

APPROVED \_\_\_\_\_, Owner

By \_\_\_\_\_

(Title)

