

HARLEY MAHONEY
152 A.

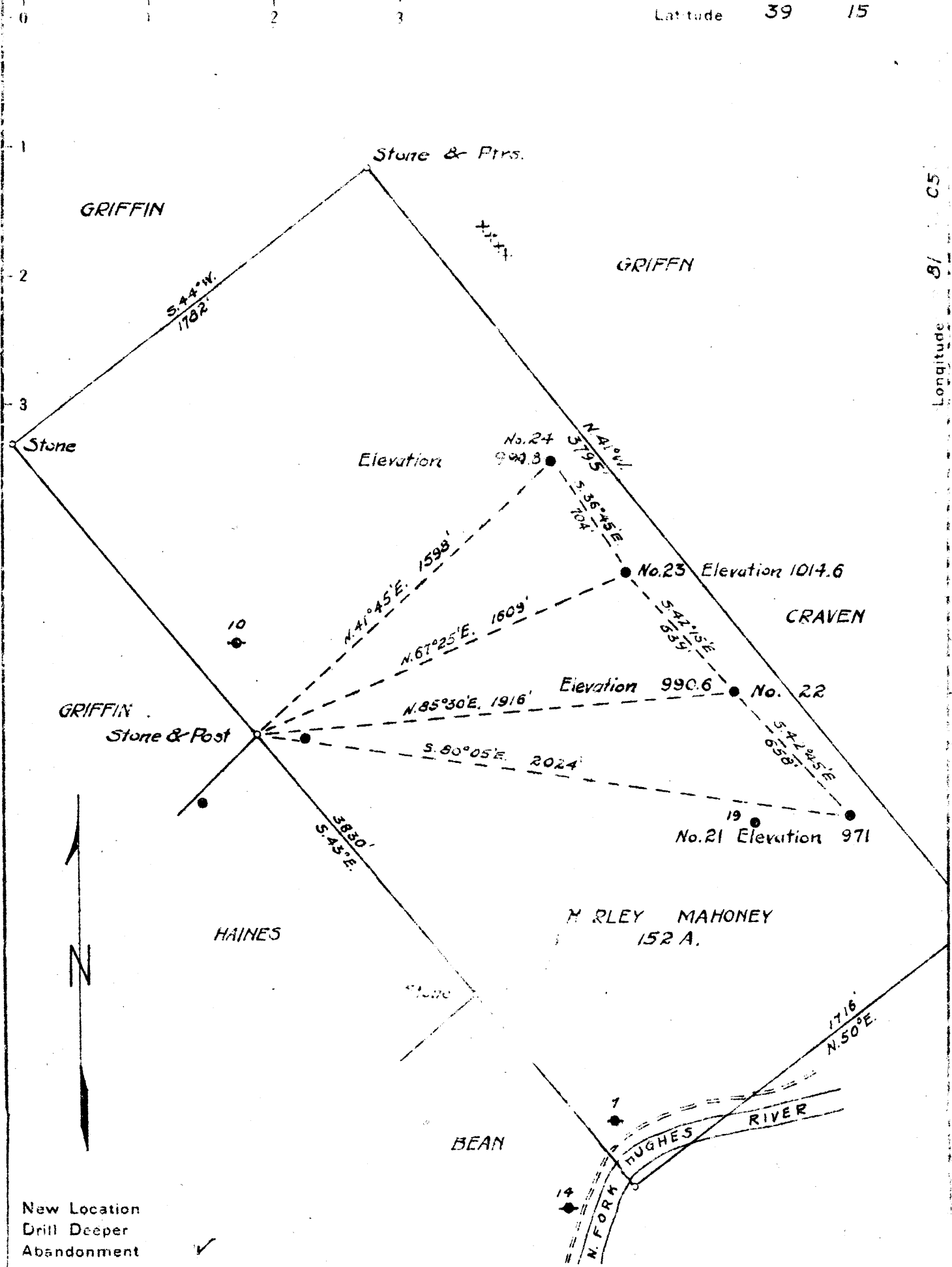
# 21	3.53 W	2.07 W
# 22	3.15 W	2.0 W
# 23	3.16 W	1.91 W
# 24	3.71 W	1.83 W

SEP 22 1947

Company OTTO NELLE OIL & GAS CO.
 Address CORNWALLIS, W. VA.
 Farm HARLEY MAHONEY
 Tract _____ Acres 152 Lease No. _____
 Well (Farm) No. 21, 22, 23, 24 Serial No. _____
 Elevation (Spirit Level) 971, 990.6, 1014.6, 999.3
 Quadrangle HARRISVILLE
 County RITCHIE District GRANT
 Engineer B. F. RINEHART
 Engineer's Registration No. 648
 File No. _____ Drawing No. 634-GR
 Date July 30, 1947 Scale 1 in = 500 ft.

STATE OF WEST VIRGINIA
 DEPARTMENT OF MINES
 OIL AND GAS DIVISION
 CHARLESTON

WELL LOCATION MAP
 Rit-795-A-#23
 Rit-797-A-#22
 Rit-792-A-#24
 + Denotes location of well on United States Topographic Maps, scale 1 to 62,500, latitude and longitude lines being represented by border lines as shown.
 - Denotes one inch spaces on border line of original tracing.



New Location
 Drill Deeper
 Abandonment ✓

Company OTTO NELLE OIL & GAS CO.
 Address CORNWALLIS, W. VA.
 Farm HARLEY MAHONEY
 Tract _____ Acres 152 Lease No. _____
 Well (Farm) No. 21, 22, 23, 24 Serial No. _____
 Elevation (Spirit Level) 971, 990.6, 1014.6, 990.8
 Quadrangle HARRISVILLE
 County RITCHIE District GRANT
 Engineer B. F. RINEHART
 Engineer's Registration No. 648
 File No. _____ Drawing No. 634-GR
 Date July 30, 1947 Scale 1 in. = 500 ft.

STATE OF WEST VIRGINIA
 DEPARTMENT OF MINES
 OIL AND GAS DIVISION
 CHARLESTON

WELL LOCATION MAP
 Rite-795-A-#23 Rite-798-A-#21
 Rite-792-A-#24 Rite-797-A-#22
 + Denotes location of well on United States Topographic Maps, scale 1 to 62,500, latitude and longitude lines being represented by border lines as shown.
 - Denotes one inch spaces on border line of original tracing.