

M. S. McCULLOUGH

F. C. PIERPOINT

D. W. HESS

D. W. HESS 914

A. C. RIGGS

- New Location
- Drill Deeper
- Abandonment

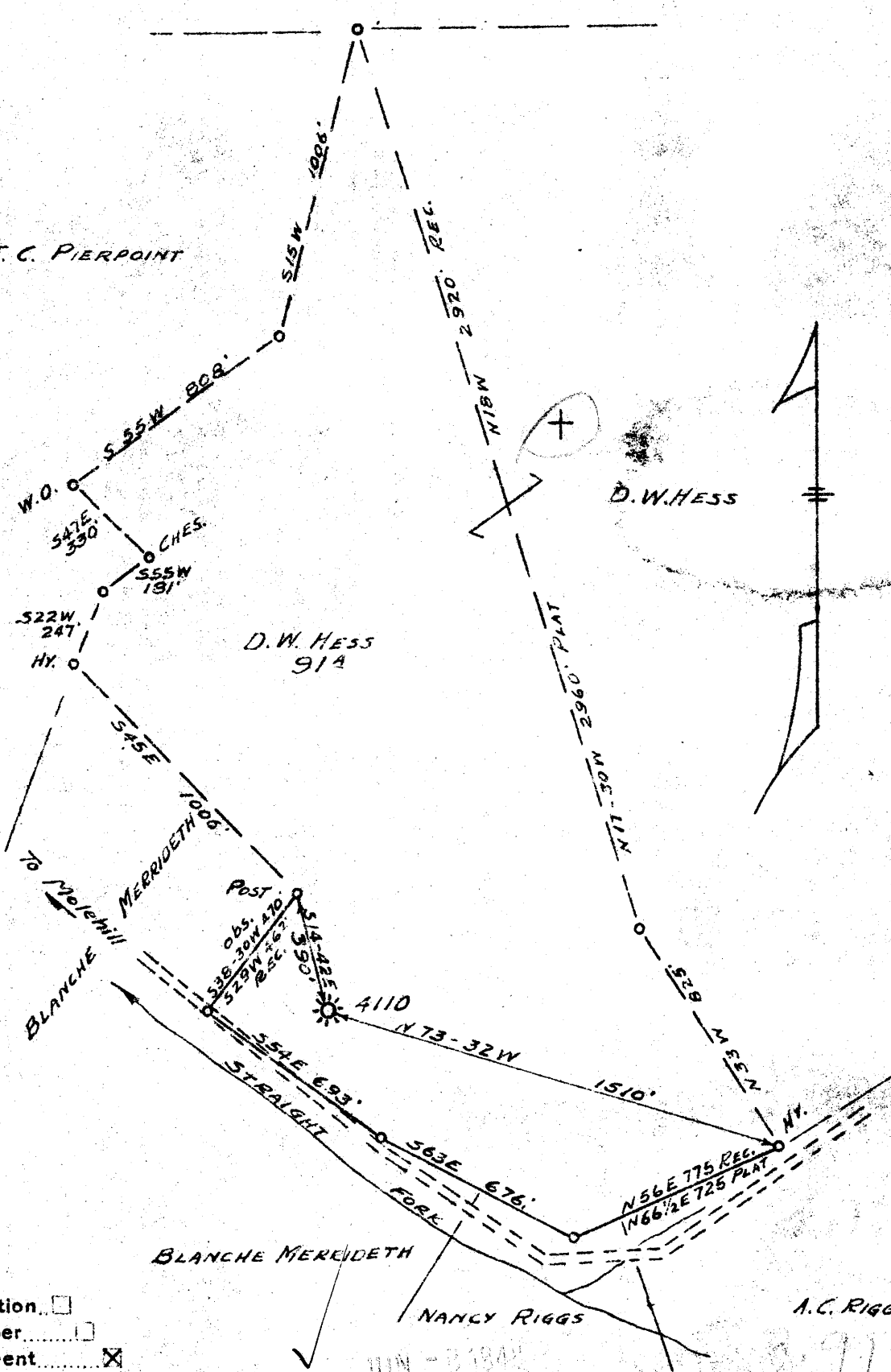
Company PITTSBURGH & W. VA. GAS CO.
 Address CLARKSBURG W. VA.
 Farm D. W. HESS
 Tract _____ Acres 268 Lease No. 5584
 Well (Farm) No. 2 Serial No. 4110
 Elevation (Spirit Level) 1026 L.
 Quadrangle WEST UNION S.W. 22
 County RITCHIE District CLAY
 Engineer Paul W. Manning
 Engineer's Registration No. _____
 File No. 111/65 Drawing No. _____
 Date 8-4-42 Scale 1" = 500'

STATE OF WEST VIRGINIA
 DEPARTMENT OF MINES
 OIL AND GAS DIVISION
 CHARLESTON

WELL LOCATION MAP
 FILE NO. Rit-833-A

+ Denotes location of well on United States Topographic Maps, scale 1 to 62,500, latitude and longitude lines being represented by border lines as shown.

- Denotes one inch spaces on border line of original tracing.



D. W. HESS NO. 2 (4110) WELL.

Clay District, Ritchie County, W. Va.

By Pittsburgh & W. Va. Gas Co., Clarksburg, W. Va.

Abandoned under permit Rit-833-A.

On 91 acres; West Union S/W 2-2.

Elevation, 1026' L.

Surface and minerals owned by E. E. Hess, Josephs Mills, W. Va.

Drilling commenced Oct. 19, 1912; completed Nov. 23, 1912.

Shot Nov. 26, 1912, in Big Injun Sand, at 2034', with 50 qts. glycerine.

10" casing, 240'; 8 $\frac{1}{4}$ " , 1085' (left in?); 6 $\frac{5}{8}$ " , 1875'.

Coal was encountered at 660-661'.

Gas well. Abandonment reported to Dept. of Mines Aug. 5, 1942.

(Record stamped May 7, 1948).

Record to RCT from Mrs. Griffith Jan. 22, 1949. Old File No. 786.

	Top.	Bottom.
Red rock, soft	0	110
Slate-Shells, light, soft	110	230
Sand, light, hard	230	255
Slate, red, soft	255	265
Red rock, soft and hard	265	330
Sand, light, hard	330	360
Slate, red, soft	360	375
Lime, white, hard	375	385
Slate, light, soft	385	405
Sand, light, hard	405	415
Red rock, soft and hard	415	510
Slate, red, soft	510	520
Sand, white, hard	520	580
Slate and sand, white, soft and hard	580	650
Slate, dark, soft	650	655
Lime, dark, hard	655	660
Pittsburgh Coal, dark, soft	660	661
Slate, dark, soft	661	665
Lime, dark, hard	665	680
Slate and lime, white, soft and hard	680	775
Red rock, soft and hard	775	1010
Dunkard Sand, light, soft	1010	1025
Red rock, soft	1025	1040
Slate and shells, white, soft and hard	1040	1065
Sand, white, hard	1065	1110
Slate and shells, dark, soft and hard	1110	1140
Sand, light, hard	1140	1180
Slate, light, soft	1180	1380
Sand, light, hard	1380	1445
Slate and shells, light, soft and hard	1445	1465
Sand, light, hard	1465	1575
Slate and shells, dark, soft and hard	1575	1655
Sand, white, hard	1655	1735
Slate and shells, dark, soft and hard	1735	1810
Sand, dark, hard	1810	1825
Slate, dark, soft	1825	1857
Lime, light, hard	1857	1872
Slate, dark, soft	1872	1887
Big Lime, white, hard	1887	1962
Big Injun Sand, light, hard (gas, 1992') (gas, 2026')	1962	2087
Slate-Shells, light, soft and hard	2087	2210
Gantz Sand, light, hard	2210	2360
Slate and shells, dark, soft and hard	2360	2660
Gordon Sand, dark, hard	2660	2672
Slate and shells, light, soft and hard	2672	2763
Total depth	2763	

STATE OF WEST VIRGINIA
DEPARTMENT OF MINES
OIL AND GAS DIVISION

786

WELL RECORD

Permit No. 433-A

Oil or Gas Well Gas
(KIND)

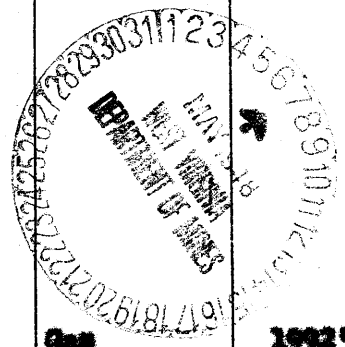
Company Pittsburgh & West Va Gas Company.
Address Clarksburg, West Va.,
Farm D. W. Hess Acres 9 1/2
Location (waters) West Union - S/W. 2-2
Well No. 4110 Elev. 1026'
District Clay County Putnam
The surface of tract is owned in fee by E. E. Hess
Joseph Mills, West Va.,
Address West Va.,
Mineral rights are owned by E. E. Hess
Joseph Mills, W. Va.,
Address West Va.,
Drilling commenced October 19, 1912
Drilling completed November 23, 1912
Date Shot 11-26-1912 From H. I. Sand To 2034
With 30 Quarts - Glycerine.

Casing and Tubing	Used in Drilling	Left in Well	Packers
Size			Kind of Packer
16			
13			
10	<u>240'</u>	<u>240'</u>	Size of
8 1/4	<u>1085'</u>	<u>1085' 7"</u>	
6 3/4	<u>1075'</u>	<u>1075'</u>	Depth set
5 3/16			
3			Perf. top
2			Perf. bottom
Liners Used			Perf. top
			Perf. bottom

Open Flow /10ths Water in _____ Inch
/10ths Merc. in _____ Inch
Volume _____ Cu. Ft.
Rock Pressure _____ lbs. _____ hrs.
Oil _____ bbls., 1st 24 hrs.
Fresh water _____ feet _____ feet
Salt water _____ feet _____ feet

CASING CEMENTED _____ SIZE _____ No. Ft. _____ Date _____
COAL WAS ENCOUNTERED AT 660 FEET 12 INCHES
FEET _____ INCHES FEET _____ INCHES
FEET _____ INCHES FEET _____ INCHES

Formation	Color	Hard or Soft	Top	Bottom	Oil, Gas or Water	Depth Found	Remarks
Red Rock	Red	Soft	0	110			
Slate-Shells	Light	"	110	230			
Sand	"	Hard	230	235			
Slate	Red	Soft	235	265			
Red Rock	"	Soft/Hard	265	330			
Sand	Light	Hard	330	360			
Slate	Red	Soft	360	375			
Lime	White	Hard	375	385			
Slate	Light	Soft	385	405			
Sand	Light	Hard	405	415			
Red Rock	Red	Soft/Hard	415	510			
Slate	Red	Soft	510	520			
Sand	White	Hard	520	580			
Slate/Sand	"	Soft/Hard	580	630			
Slate	Dark	Soft	630	655			
Lime	"	Hard	655	660			
Fgh. Coal	"	Soft	660	661			
Slate	"	"	661	665			
Lime	"	Hard	665	680			
Slate/Lime	White	Soft/Hard	680	775			
Red Rock	Red	Soft/Hard	775	1030			
Dunkard Sand	Light	Soft	1030	1025			
Red Rock	Red	"	1025	1040			
Slate/Shells	White	Soft/Hard	1040	1065			
Sand	"	Hard	1065	1110			
Slate/Shells	Dark	Soft/Hard	1110	1140			
Sand	Light	Hard	1140	1180			
Slate	"	Soft	1180	1380			
Sand	"	Hard	1380	1445			
Slate/Shells	"	Soft/Hard	1445	1465			
Sand	"	Hard	1465	1575			
Slate/Shells	Dark	Soft/Hard	1575	1655			
Sand	White	Hard	1655	1735			
Slate/Shells	Dark	Soft/Hard	1735	1810			
Sand	Dark	Hard	1810	1825			
Slate	"	Soft	1825	1857			
Lime	Light	Hard	1857	1872			
Slate	Dark	Soft	1872	1887			
Big Lime	White	Hard	1887	1962			
Big Injan	Light	Hard	1962	2007	Gas	1992'	
Slate-Shells	"	Soft/Hard	2007	2210	Gas	2026'	
Quartz Sand	"	Hard	2210	2360			



Formation	Color	Hard or Soft	Top	Bottom	Oil, Gas or Water	Depth Found	Remarks
Flat Shells	Dark	Soft	2360	2660			
Carbon Sand	"	Hard	2660	2672			
Flat Shells	Light	Soft	2672	2763			
Total Depth				2763'			

Date August 5th, 1942, 194

APPROVED PETTSBORO & WEST VA GAS COMPANY. Owner
 By *W. M. ...*
 (Title)

FORMATIONS
FORM: O 32-5170

Well # 4110 D. W. Hess

NAME	TOP	BOTTOM	OIL	GAS	WATER	REMARKS
Red Rock & Shells		110				
Slate & Shells	110	230				
Sand	230	253				
Slate	253	265				
Red Rock & Lime	265	330				
Sand	330	360				
Slate	360	375				
Lime	375	385				
Slate	385	405				
Sand	405	415				
Red Rock & Lime	415	510				
Slate	510	520				
Heavy up sand	520	580				
Slate & sand	580	650				
Slate	650	655				
Lime	655	660				
Chi. Coal	660	665				
Lime	665	680				
Slate & Lime	680	775				
Red Rock & Shells	775	1010				
Quartz sand	1010	1025				
Red Rock	1025	1040				
Slate & Shells	1040	1065				
Sand	1065	1110				
Slate & Shells	1110	1140				
Sand	1140	1180				
Slate	1180	1380				
Sand	1380	1445				
Slate & Shells	1445	1465				
Sand	1465	1575				
Slate & Shells	1575	1655				
Sand	1655	1735				
Slate & Shells	1735	1810				
Sand	1810	1825				
Slate	1825	1857				
Lime	1857	1872				
Slate	1872	1888				
Big Lime	1888	1962				
Sand	1962	2087		1992		
Slate & Shells	2087	2210		2026		
Quartz sand	2210	2360				
Slate & Shells	2360	2660				
Ordinary sand	2660	2672				
Slate & Shells	2672	2763				
Total Depth	2763					