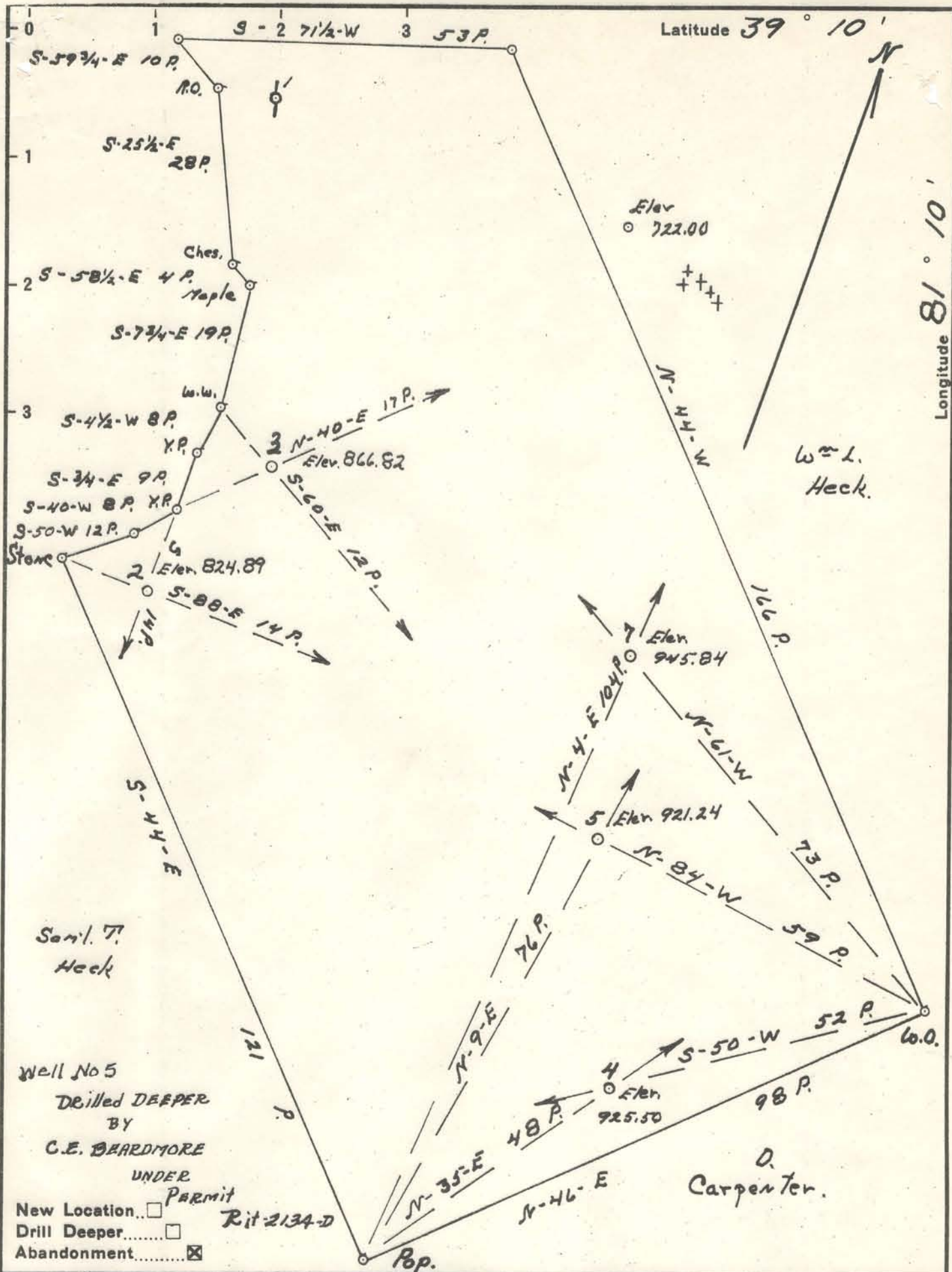


Company American Oil Development Co.  
 Address Sistersville W. Va.  
 Farm J. L. & M. U. Muller Tract  
 Tract \_\_\_\_\_ Acres 97 Lease No. \_\_\_\_\_  
 Well (Farm) No. 2, 3, 4, 5, 7 Serial No. WC  
 Elevation (Spirit Level) \_\_\_\_\_  
 Quadrangle Harrisville  
 County Ritchie District Grant  
 Engineer J. S. Naught  
 Engineer's Registration No. Cannals Surveyor Tyler County W. Va.  
 File No. \_\_\_\_\_ Drawing No. \_\_\_\_\_  
 Date 10-11-48 Scale 200 ft = 1 inch

STATE OF WEST VIRGINIA  
 DEPARTMENT OF MINES  
 OIL AND GAS DIVISION  
 CHARLESTON

WELL LOCATION MAP

FILE NO. Rit-876-A-#2  
Rit-883-A-#5 Rit-877-A-#3  
Rit-884-A-#7 Rit-878-A-#4  
 + Denotes location of well on United States  
 Topographic Maps, scale 1 to 62,500, lat-  
 itude and longitude lines being represented  
 by border lines as shown.  
 - Denotes one inch spaces on border line  
 of original tracing.



Company American Oil Development Co.  
 Address Sistersville W. Va.  
 Farm J. L. & N. U. Muller vax  
 Tract \_\_\_\_\_ Acres 97 Lease No. \_\_\_\_\_  
 Well (Farm) No. 2, 3, 4, 5, 7 Serial No. \_\_\_\_\_  
 Elevation (Spirit Level) \_\_\_\_\_  
 Quadrangle Harrisville  
 County Ritchie District Grant  
 Engineer J. S. Haught  
 Engineer's Registration No. County Surveyor Tyler County  
 File No. \_\_\_\_\_ Drawing No. \_\_\_\_\_  
 Date 10-11-48 Scale 20nds = 1 inch

STATE OF WEST VIRGINIA  
 DEPARTMENT OF MINES  
 OIL AND GAS DIVISION  
 CHARLESTON

**WELL LOCATION MAP**

FILE NO. Rit-876-A-#2  
Rit-877-A-#3  
Rit-884-A-#7 Rit-878-A-#4  
 + Denotes location of well on United States Topographic Maps, scale 1 to 62,500, latitude and longitude lines being represented by border lines as shown.  
 - Denotes one inch spaces on border line of original tracing.

J. L. AND N. U. MULLENNAX NO. 7 WELL.

Grant District, Ritchie County, W. Va.

By American Oil Development Co., Sistersville, W. Va.

Abandoned under permit Rit-884-A?

On 97 acres, on Gillespie Run.

Elevation, 945.84' L.

Surface and minerals owned by J. L. and N. U. Mullennax, Cairo, W. Va.

Drilling commenced Jan. 27, 1919; completed March 7, 1919.

Shot March 11, 1919, at 1747-1756', with 40 qts. glycerine.

Oil, 3 bbls., 1st 24 hrs.

10" casing, 240' (pulled); 8 $\frac{1}{2}$ " , 960' (pulled); 6 $\frac{5}{8}$ " , 1435'.

Oil well. Record to Dept. of Mines dated Oct. 11, 1948.

Record to RCT from Mrs. Griffith September 27, 1949. Old File No. 811.

	Top.	Bottom.
First Gas Sand	1200	- 1280
Second Gas Sand	1640	- 1695
Salt Sand (oil, 1756')	1695	- 1761
Total depth		1761

J. L. AND N. U. MULLENNAX NO. 7 WELL.

884A

Grant District, Ritchie County, W. Va.  
By American Oil Development Co., Sistersville, W. Va.  
Abandoned under permit Rit-.....-A?  
On 97 acres, on Gillespie Run.  
Elevation, 945.84' L.  
Surface and minerals owned by J. L. and N. U. Mullennax, Cairo, W. Va.  
Drilling commenced Jan. 27, 1919; completed March 7, 1919.  
Shot March 11, 1919, at 1747-1756', with 40 qts. glycerine.  
Oil, 3 bbls., 1st 24 hrs.  
10" casing, 240' (pulled); 8 1/2", 960' (pulled); 6 3/4", 1435'.  
Oil well. Record to Dept. of Mines dated Oct. 11, 1948.  
Record to RCT from Mrs. Griffith September 27, 1949. Old File No. 811.

	Top.	Bottom.
First Gas Sand	1200	- 1280
Second Gas Sand	1640	- 1695
Salt Sand (oil, 1756')	1695	- 1761
Total depth		1761



811

STATE OF WEST VIRGINIA  
DEPARTMENT OF MINES  
OIL AND GAS DIVISION

WELL RECORD

Permit No. 884 A

Oil or Gas Well Oil Well  
(KIND)

Company American Oil Development Co.,  
Address Sistersville, West Virginia.  
Farm J. L. & N. U. Mullennax Acres 97  
Location (waters) Gillespie Run  
Well No. Seven (7) Elev. 945.84  
District Grant County Ritchie  
The surface of tract is owned in fee by J. L. & N. U. Mullennax  
Address Gairo, W. Va.  
Mineral rights are owned by Same  
Address \_\_\_\_\_

Drilling commenced January 27th, 1919  
Drilling completed March 7th, 1919  
Date Shot 3-11-19 From 1747 To 1756  
With 40 qts of glycerine

Open Flow /10ths Water in \_\_\_\_\_ Inch  
/10ths Merc. in \_\_\_\_\_ Inch  
Volume \_\_\_\_\_ Cu. Ft.  
Rock Pressure \_\_\_\_\_ lbs. \_\_\_\_\_ hrs.  
Oil three bbls., 1st 24 hrs.  
Fresh water \_\_\_\_\_ feet  
Salt water \_\_\_\_\_ feet

Casing and Tubing	Used in Drilling	Left in Well	Packers
Size			Kind of Packer
16			
13			
10	240		Size of
8 1/4	960		
6 5/8	1435	1435	Depth set
5 3/16			
3			Perf. top
2			Perf. bottom
Liners Used			Perf. top
			Perf. bottom

CASING CEMENTED	SIZE	No. Ft.	Date
COAL WAS ENCOUNTERED AT _____ FEET _____ INCHES			

Formation	Color	Hard or Soft	Top	Bottom	Oil, Gas or Water	Depth Found	Remarks
First Gas Sand			1200	1280			
Second Gas Sand			1640	1695			
Salt Sand			1695	1761	Oil	1756	
Total Depth			1761				



