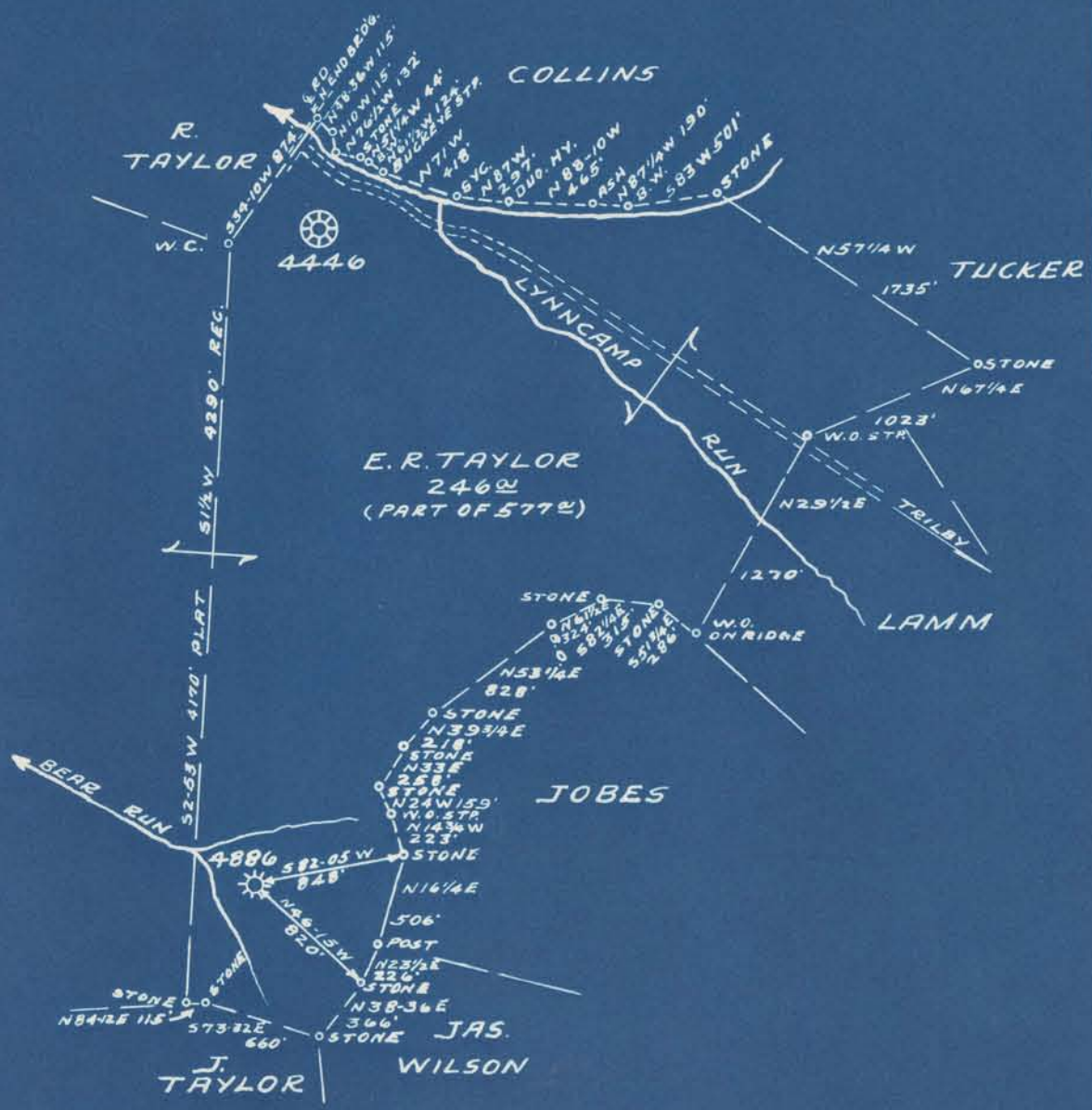


Latitude 39° 15'

Longitude 80° 55'



1.06 S  
1.57 W

New Location   
 Drill Deeper   
 Abandonment

Company PITTSBURGH E. W.VA. GAS CO.  
 Address CLARKSBURG, W.VA.  
 Farm E. R. TAYLOR  
 Tract Acres 577 Lease No. 5407  
 Well (Farm) No. THREE Serial No. 4886  
 Elevation (Spirit Level) 988' V.A.  
 Quadrangle HOLBROOK N.W. 12  
 County RITCHIE District CLAY  
 Engineer Kenneth B. Moore  
 Approved By J. B. Beigden 764  
 Engineer's Registration No. 764  
 File No. V.160 P.65 Drawing No.           
 Date OCT. 13, 1948 Scale 1" = 1000'

STATE OF WEST VIRGINIA  
 DEPARTMENT OF MINES  
 OIL AND GAS DIVISION  
 CHARLESTON

WELL LOCATION MAP  
 FILE NO. Rit - 895-A

+ Denotes location of well on United States Topographic Maps, scale 1 to 62,500, latitude and longitude lines being represented by border lines as shown.  
 - Denotes one inch spaces on border line of original tracing.