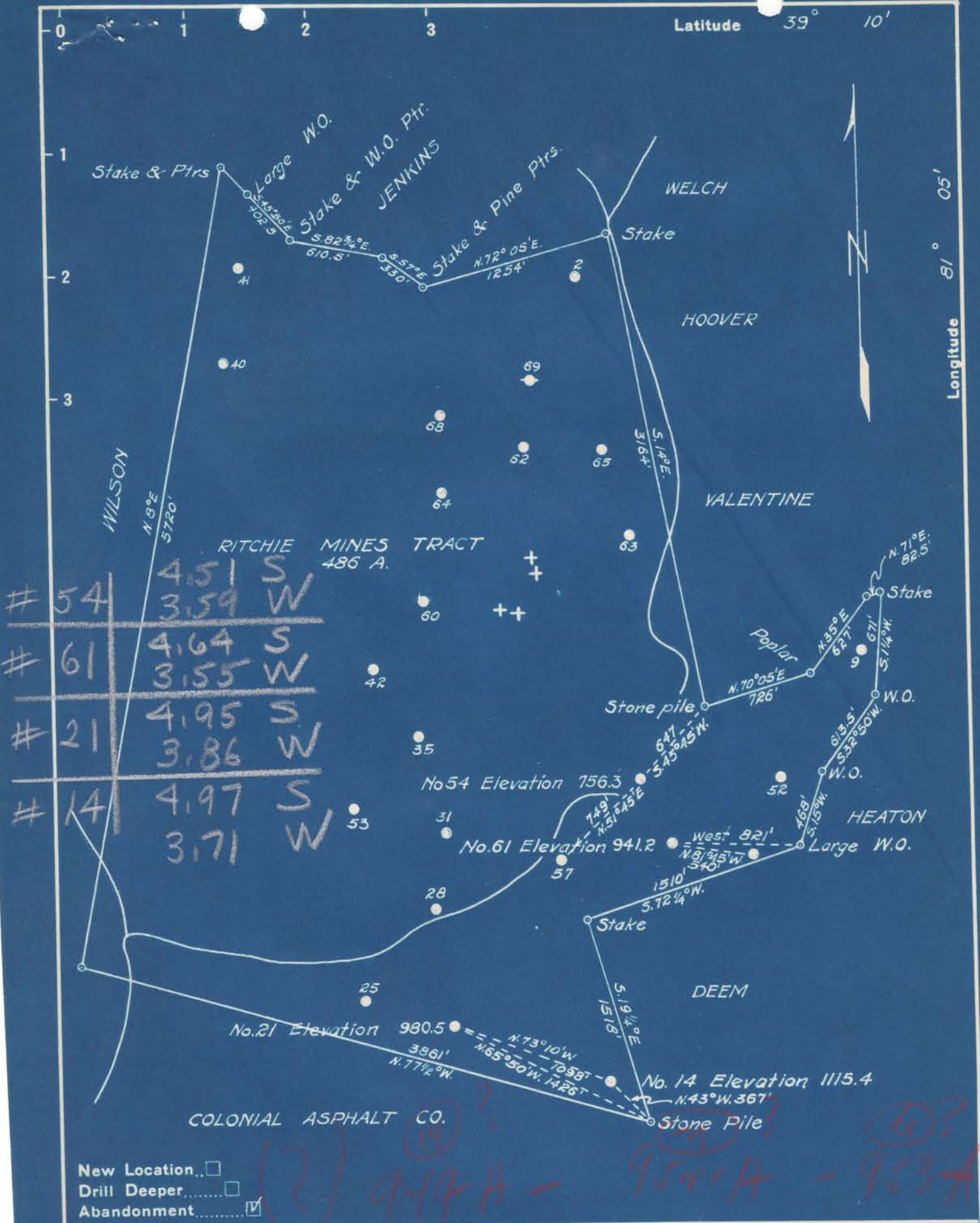


Latitude 39° 10'

Longitude 81° 05'



New Location...   
 Drill Deeper...   
 Abandonment...

Company J. B. ELDER  
 Address CAIRO, W. VA.  
 Farm RITCHIE MINES TRACT  
 Tract \_\_\_\_\_ Acres 486 Lease No. \_\_\_\_\_  
 Well (Farm) No. 14-21-54-61 Serial No. \_\_\_\_\_  
 Elevation (Spirit Level) 1115.4-980.5-756.3-941.2  
 Quadrangle HARRISVILLE  
 County RITCHIE District MURPHY  
 Engineer B. F. RINEHART  
 Engineer's Registration No. 648  
 File No. \_\_\_\_\_ Drawing No. 760-MR  
 Date June 20, 1949 Scale 1 in. = 800 ft.

STATE OF WEST VIRGINIA  
 DEPARTMENT OF MINES  
 OIL AND GAS DIVISION  
 CHARLESTON

**WELL LOCATION MAP**  
 FILE NO. Rit-948-A-#54

+ Denotes location of well on United States Topographic Maps, scale 1 to 62,500, latitude and longitude lines being represented by border lines as shown.

- Denotes one inch spaces on border line of original tracing.

RITCHIE MINES TRACT NO. 54 WELL.

948A

Murphy District, Ritchie County, W. Va.

By J. B. Elder, Cairo, W. Va.

Abandoned under permit Rit-.....-A7

On 486 acres, on Macfarlan Creek.

Elevation, 756.3' L.

Surface owned by Joseph B. Lodge and Jos. B. Geard and minerals  
by Wilson Heirs, Kemp Heirs, and others.

No casing record.

Oil well. Sheet to Dept. of Mines stamped Aug. 23, 1949.

Record to RCT from Mrs. Griffith September 27, 1949. Old File No. 814.

"FORMATION NOT KNOWN"



814

STATE OF WEST VIRGINIA  
DEPARTMENT OF MINES  
OIL AND GAS DIVISION

WELL RECORD

Permit No. 948-A

Oil or Gas Well OIL  
(KIND)

Company J. B. Elder  
 Address Cairo, W. Va.  
 Farm Ritchie Mines Tract Acres 486  
 Location (waters) McFarlan Creek  
 Well No. 54 Elev. 756.3  
 District Murphy County Ritchie  
 The surface of tract is owned in fee by Joseph B. Lodge & Hos. B. Geard  
 Address Wilson Heirs', Kemp Heirs'  
 Mineral rights are owned by and others  
 Address \_\_\_\_\_

Casing and Tubing	Used in Drilling	Left in Well	Packers
Size			Kind of Packer
16			
13			
10			Size of
8 1/4			
6 7/8			Depth set
5 3/16			
3			Perf. top
2			Perf. bottom
Liners Used			Perf. top
			Perf. bottom

Drilling commenced \_\_\_\_\_  
 Drilling completed \_\_\_\_\_  
 Date Shot From \_\_\_\_\_ To \_\_\_\_\_  
 With \_\_\_\_\_  
 Open Flow /10ths Water in \_\_\_\_\_ Inch  
 /10ths Merc. in \_\_\_\_\_ Inch  
 Volume \_\_\_\_\_ Cu. Ft.  
 Rock Pressure \_\_\_\_\_ lbs. \_\_\_\_\_ hrs.  
 Oil \_\_\_\_\_ bbls., 1st 24 hrs.  
 Fresh water \_\_\_\_\_ feet \_\_\_\_\_ feet  
 Salt water \_\_\_\_\_ feet \_\_\_\_\_ feet

CASING CEMENTED	SIZE	No. Ft.	Date

COAL WAS ENCOUNTERED AT	FEET	INCHES	FEET	INCHES

Formation	Color	Hard or Soft	Top	Bottom	Oil, Gas or Water	Depth Found	Remarks
FORMATION NOT KNOWN							

