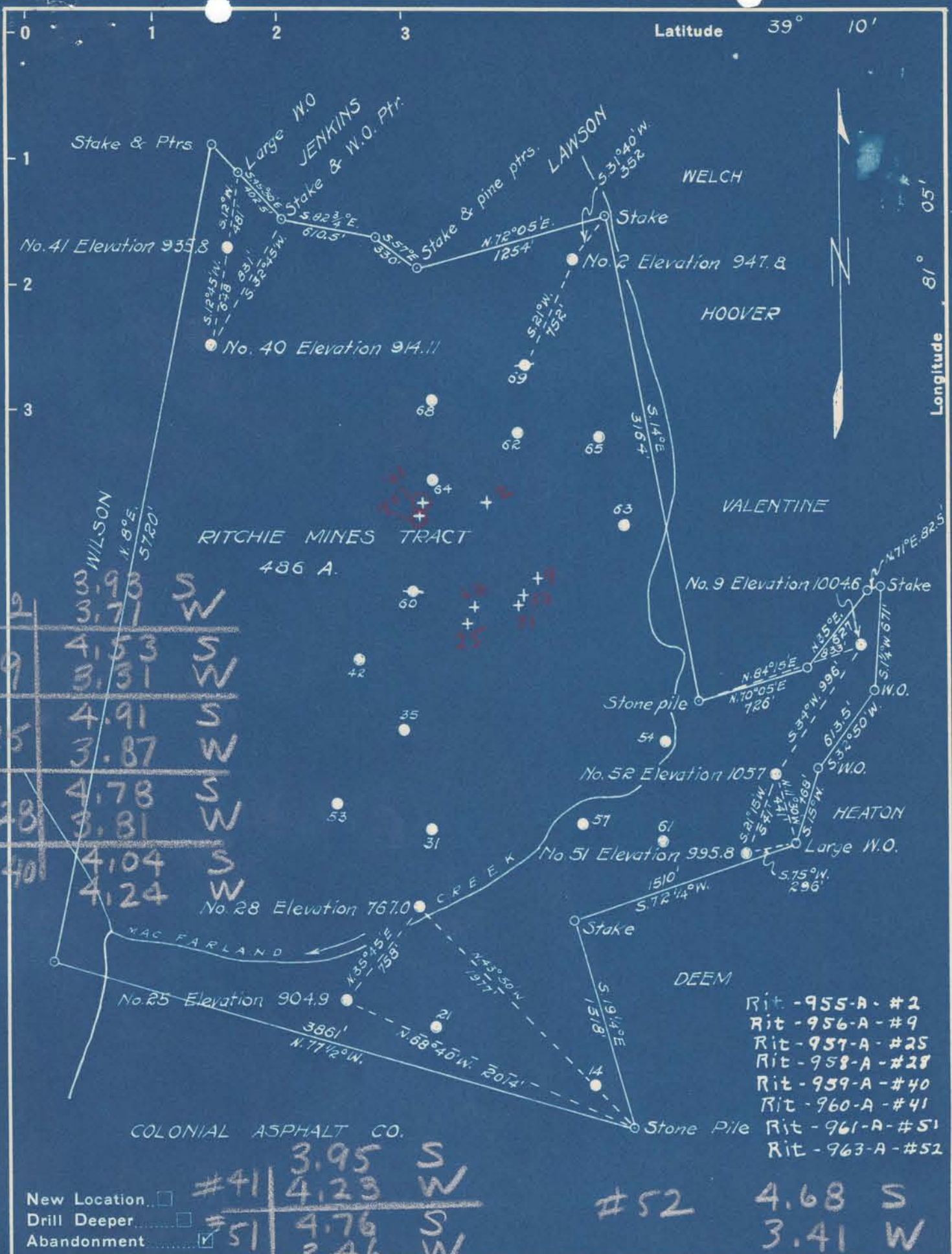


Latitude 39° 10'

Longitude 81° 05'



| | | |
|------|------|---|
| # 2 | 3.93 | S |
| | 3.71 | W |
| # 9 | 4.53 | S |
| | 3.31 | W |
| # 25 | 4.91 | S |
| | 3.87 | W |
| # 28 | 4.78 | S |
| | 3.81 | W |
| # 40 | 4.04 | S |
| | 4.24 | W |

- Rit - 955-A - #2
- Rit - 956-A - #9
- Rit - 957-A - #25
- Rit - 958-A - #28
- Rit - 959-A - #40
- Rit - 960-A - #41
- Rit - 961-A - #51
- Rit - 963-A - #52

| | | |
|------|------|---|
| # 41 | 3.95 | S |
| | 4.23 | W |
| # 51 | 4.76 | S |
| | 3.46 | W |

52 4.68 S
3.41 W

New Location
 Drill Deeper
 Abandonment

Company C. W. CUNNINGHAM
 Address CAIRO, W. VA.
 Farm RITCHIE MINES TRACT
 Tract Acres 486 Lease No. _____
 Well (Farm) No. 2-9-25-28-40-41-51-52 Serial No. _____
 Elevation (Spirit Level) _____
 Quadrangle HARRISVILLE
 County RITCHIE District MURPHY
 Engineer B. F. RINEHART
 Engineer's Registration No. 648
 File No. _____ Drawing No. 759-GR
 Date June 17, 1949 Scale 1 in. = 800 ft.

STATE OF WEST VIRGINIA
 DEPARTMENT OF MINES
 OIL AND GAS DIVISION
 CHARLESTON

WELL LOCATION MAP
 FILE NO. 955-961-A
L 963A

+ Denotes location of well on United States Topographic Maps, scale 1 to 62,500, latitude and longitude lines being represented by border lines as shown.

- Denotes one inch spaces on border line of original tracing.