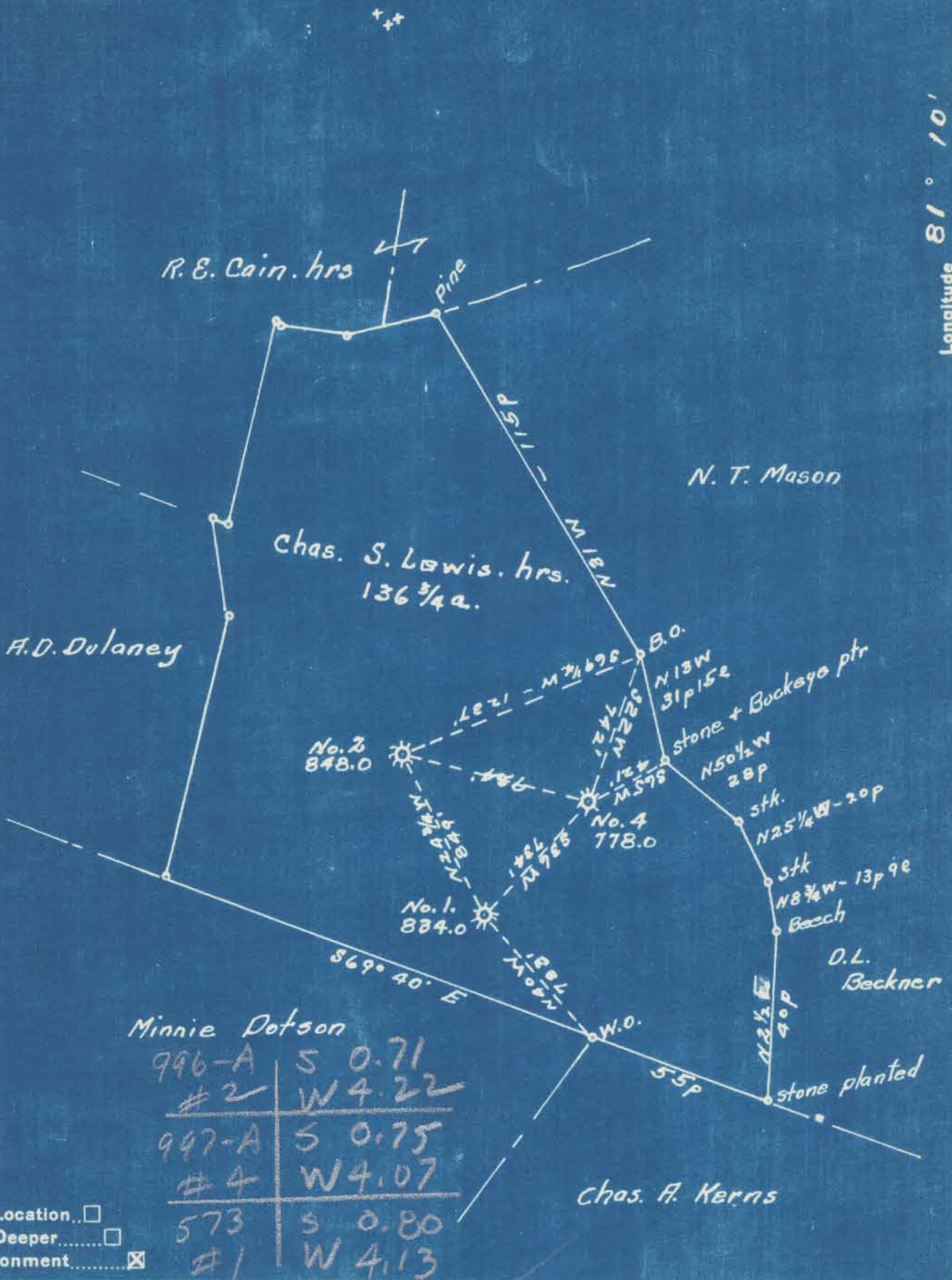


Latitude 39° 10'

Longitude 81° 10'



996-A	S	0.71
#2	W	4.22
997-A	S	0.75
#4	W	4.07
573	S	0.80
#1	W	4.13

Company Nollem Oil & Gas Corp.  
Address 210 E. Parkway North Side Station, Pittsburg, Pa.  
Farm Chas. S. Lewis hrs.  
Tract      Acres 136 3/4 Lease No.       
Well (Farm) No. 1, 2, & 4 Serial No.       
Elevation (Spirit Level) #1 834.0 #2 848.0 #4 778.0  
Quadrangle Harrisville  
County Ritchie District Grant  
Engineer W. Barnhart  
Engineer's Registration No. Surveyor WC  
File No.      Drawing No.       
Date Nov. 12, 1941 Scale 1" = 40 p

STATE OF WEST VIRGINIA  
DEPARTMENT OF MINES  
OIL AND GAS DIVISION  
Ritchie-997-A #4  
CHARLESTON  
Ritchie-996-A #2  
**WELL LOCATION MAP**  
FILE NO. Ritchie-573-A-Well #1

+ Denotes location of well on United States Topographic Maps, scale 1 to 62,500, latitude and longitude lines being represented by border lines as shown.  
- Denotes one inch spaces on border line of original tracing.



STATE OF WEST VIRGINIA  
DEPARTMENT OF MINES  
OIL AND GAS DIVISION

856

WELL RECORD

Permit No. Rit-997-82 Oil or Gas Well \_\_\_\_\_ (KIND)

Company Nollem Oil & Gas Corporation  
 Address 210 East Park Way, Pittsburgh 12, Pa.  
 Farm Chas. S. & Martha C. Lewis Acres 137  
 Location (waters) \_\_\_\_\_  
 Well No. 4 Elev. \_\_\_\_\_  
 District Grant County Ritchie  
 The surface of tract is owned in fee by \_\_\_\_\_  
 Address \_\_\_\_\_  
 Mineral rights are owned by \_\_\_\_\_  
 Address \_\_\_\_\_  
 Drilling commenced 11/7/1928  
 Drilling completed 12/27/1928  
 Date Shot 12/28/1928 From 2180' To \_\_\_\_\_  
 With \_\_\_\_\_  
 Open Flow \_\_\_\_\_ /10ths Water in \_\_\_\_\_ Inch  
 \_\_\_\_\_ /10ths Merc. in \_\_\_\_\_ Inch  
 Volume \_\_\_\_\_ Cu. Ft.  
 Rock Pressure \_\_\_\_\_ lbs. \_\_\_\_\_ hrs.  
 Oil \_\_\_\_\_ bbls., 1st 24 hrs.  
 Fresh water \_\_\_\_\_ feet \_\_\_\_\_ feet  
 Salt water \_\_\_\_\_ feet \_\_\_\_\_ feet

Casing and Tubing	Used in Drilling	Left in Well	Packers
Size			Kind of Packer
16			Bottom hole
13			Size of <u>6/5/8</u>
10 <u>no 10'</u>	365	365	Depth set <u>1665</u>
8 1/4	830	830	Perf. top _____
6 5/8	1665	1665	Perf. bottom _____
5 3/16			Perf. top _____
3			Perf. bottom _____
2			
Liners Used			

CASING CEMENTED \_\_\_\_\_ SIZE \_\_\_\_\_ No. Ft. \_\_\_\_\_ Date \_\_\_\_\_  
 COAL WAS ENCOUNTERED AT \_\_\_\_\_ FEET \_\_\_\_\_ INCHES  
 \_\_\_\_\_ FEET \_\_\_\_\_ INCHES FEET \_\_\_\_\_ INCHES  
 \_\_\_\_\_ FEET \_\_\_\_\_ INCHES FEET \_\_\_\_\_ INCHES

Formation	Color	Hard or Soft	Top	Bottom	Oil, Gas or Water	Depth Found	Remarks
Conductor				12			
Big Red			470	500			
Goble			850	865			
Black Slate			865	885			
Slate & shells			885	1085			
Sand long streak			1085	1175	Little Gas 1130'		
Slate			1175	1195			
Sans Sand			1195	1225			
Slate			1225	1275			
Sand			1275	1300			
Black Slate			1300	1445			
Salt Sand			1445	1665	Little Gas 1570'		
Big Lime			1655	1710	Water 1640'		
Keener Sand			1710	1730			
Injun Sand			1730	1820	Injun Sand broken - bas, no good.		
					Little gas 1740'		
Big Slate			1820	2180			
Berea Grit Sand			2180	2189'			
Total Depth				2189'			
Tubing Packers							
Bottom packer set at 2075'							
Top packer set at 1695'							

NOV 18 1950