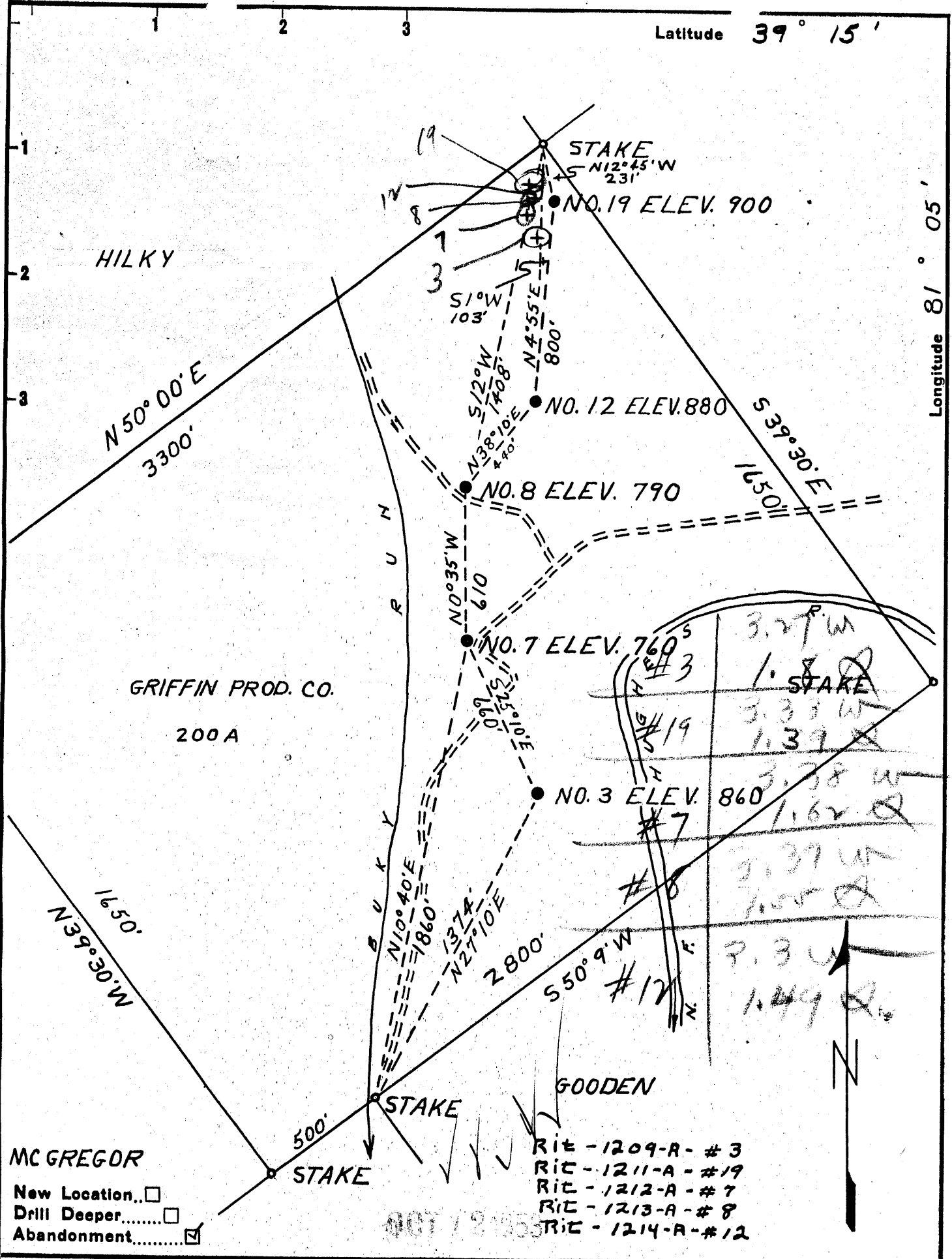


Latitude 39° 15'

Longitude 81° 05'



New Location
 Drill Deeper
 Abandonment

RIT - 1209-A - #3
 RIT - 1211-A - #19
 RIT - 1212-A - #7
 RIT - 1213-A - #8
 RIT - 1214-A - #12

Company BURGY AND MARSHALL
 Address CAIRO, W. VA.
 Farm GRIFFIN PROD. CO.
 Tract _____ Acres 200 Lease No. _____
 Well (Farm) No. 3-7-8-12-19 Serial No. _____
 Elevation (Spirit Level) SEE PLAT
 Quadrangle HARRISVILLE
 County RITCHIE District GRANT
 Engineer B. F. RINEHART
 Engineer's Registration No. 648
 File No. _____ Drawing No. _____
 Date 9-26-53 Scale 1" = 500'

STATE OF WEST VIRGINIA
 DEPARTMENT OF MINES
 OIL AND GAS DIVISION
 CHARLESTON

WELL LOCATION MAP
 FILE NO. SEE ABOVE

+ Denotes location of well on United States Topographic Maps, scale 1 to 62,500, latitude and longitude lines being represented by border lines as shown.
 - Denotes one inch spaces on border line of original tracing.

GRIFFIN PROD. Co. Wps 3, 7, 8, & 12 = BURGY & MARSHALL - RIT-1209-A,