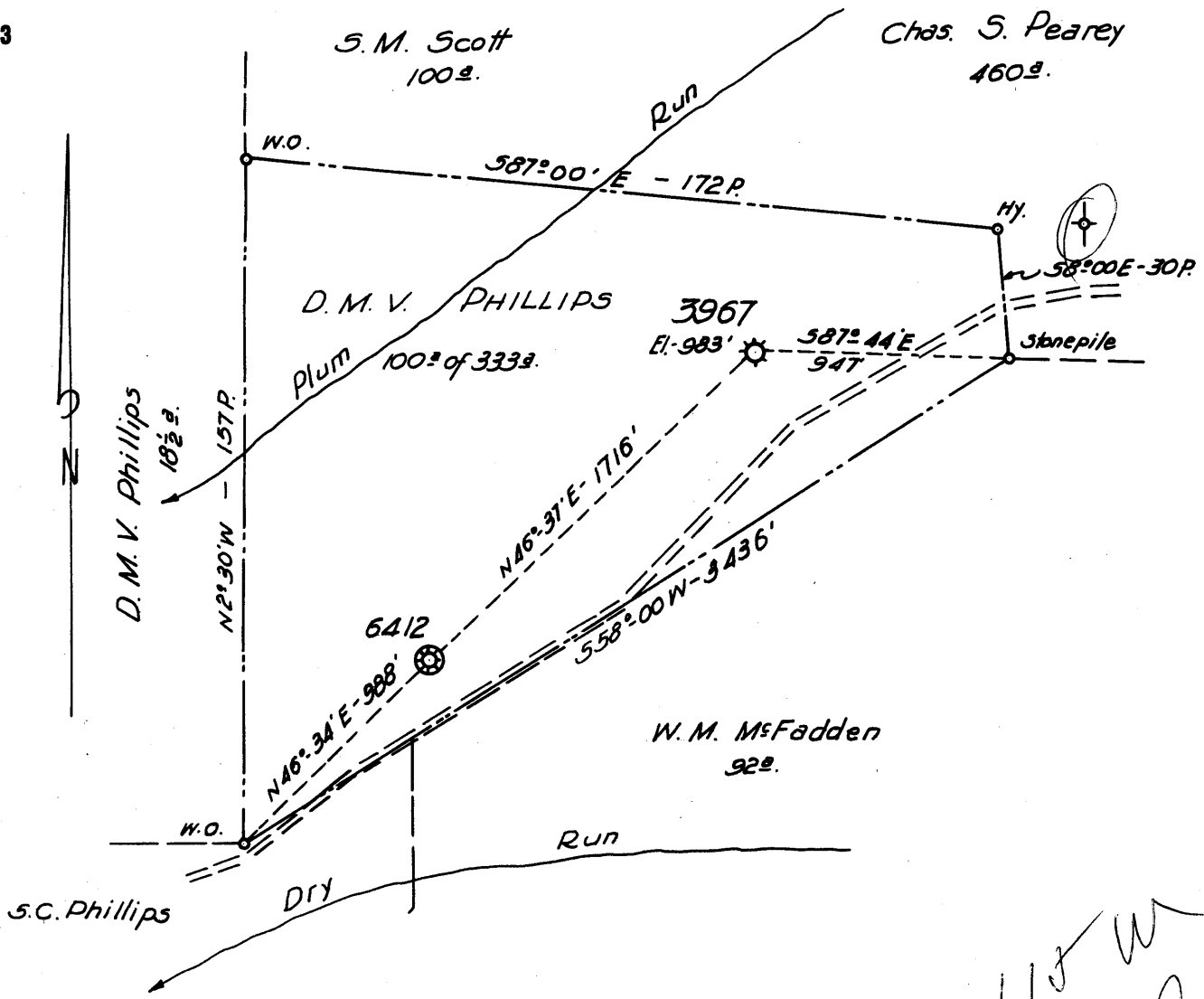


Latitude 39 ° 10 '

Longitude 81 ° 05 '



AUG 9 1960

*Handwritten:*  
 H.A. Hain  
 4-28-60

New Location   
 Drill Deeper   
 Abandonment  3967 FORMERLY H.N.G. Co. WELL N° 3967

Company P. & J. DEVELOPMENT Co.  
 Address HAMLIN, W. VA.  
 Farm D.M.V. PHILLIPS  
 Tract \_\_\_\_\_ Acres 333 Lease No. 13717  
 Well (Farm) No. \_\_\_\_\_ Serial No. 3967  
 Elevation (Spirit Level) 983'  
 Quadrangle HARRISVILLE  
 County RITCHIE District MURPHY  
 Engineer HENRY A. HAIN  
 Engineer's Registration No. 3150  
 File No. P&J. 13-60 Drawing No. \_\_\_\_\_  
 Date JUNE 27, 1960 Scale 1" = 40 POLES

STATE OF WEST VIRGINIA  
 DEPARTMENT OF MINES  
 OIL AND GAS DIVISION  
 CHARLESTON

WELL LOCATION MAP  
 FILE NO. Rit-1323-A

+ Denotes location of well on United States Topographic Maps, scale 1 to 62,500, latitude and longitude lines being represented by border lines as shown.

- Denotes one inch spaces on border line of original tracing.

D, M.V. PHILLIPS No. 3967 (Hope) - P. & J. DEV Co. - Rit-1323-A



STATE OF WEST VIRGINIA  
DEPARTMENT OF MINES  
OIL AND GAS DIVISION

1180

Quadrangle Harrisonville

Permit No. 1373 A

WELL RECORD

Oil or Gas Well Gas  
(KIND)

Company Hope Natural Gas Co.  
Address Clarksburg, W. Va.  
Farm D. M. V. Phillips Acres 333  
Location (waters) Indian Creek  
Well No. 3967 Elev. 980  
District Murphy County Ritchie  
The surface of tract is owned in fee by \_\_\_\_\_  
Address \_\_\_\_\_  
Mineral rights are owned by \_\_\_\_\_  
Address \_\_\_\_\_  
Drilling commenced Oct. 9, 1915  
Drilling completed Dec. 23, 1915  
Date Shot 1/25/16 From \_\_\_\_\_ To \_\_\_\_\_  
With 40 qts.  
Open Flow \_\_\_\_\_ /10ths Water in \_\_\_\_\_ Inch  
\_\_\_\_\_ /10ths Merc. in \_\_\_\_\_ Inch  
Volume 10,700 Cu. Ft.  
Rock Pressure \_\_\_\_\_ lbs. \_\_\_\_\_ hrs.  
Oil \_\_\_\_\_ bbls., 1st 24 hrs.  
WELL ACIDIZED \_\_\_\_\_  
WELL FRACTURED \_\_\_\_\_

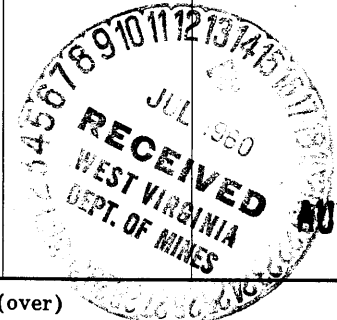
Casing and Tubing	Used in Drilling	Left in Well	Packers
Size			Kind of Packer
16			
13			
10	<u>215'</u>	<u>None</u>	Size of
8 3/4	<u>1118' 6"</u>	<u>1118' 6"</u>	Depth set
6 5/8	<u>1869'</u>	<u>1869'</u>	
5 3/16			
3	<u>83' 10"</u>	<u>83' 10"</u>	Perf. top
2	<u>1838' 8"</u>	<u>None</u>	Perf. bottom
Liners Used			Perf. top
<u>2" Tubing</u>	<u>2012'</u>	<u>2012'</u>	Perf. bottom

CASING CEMENTED \_\_\_\_\_ SIZE \_\_\_\_\_ No. Ft. \_\_\_\_\_ Date \_\_\_\_\_

COAL WAS ENCOUNTERED AT \_\_\_\_\_ FEET \_\_\_\_\_ INCHES  
\_\_\_\_\_ FEET \_\_\_\_\_ INCHES  
\_\_\_\_\_ FEET \_\_\_\_\_ INCHES

RESULT AFTER TREATMENT \_\_\_\_\_  
ROCK PRESSURE AFTER TREATMENT \_\_\_\_\_  
Fresh Water \_\_\_\_\_ Feet Salt Water \_\_\_\_\_ Feet

Formation	Color	Hard or Soft	Top	Bottom	Oil, Gas or Water	Depth	Remarks
<b>Dunkard Sand</b>			1040'	1055'			
<b>Salt Sand</b>			1676'	1780'	Gas 1690'		
<b>Maxon Sand</b>			1802'	1826'	Gas 1699'		
<b>Injun Sand</b>			1928'	2008'	Gas 1936' Gas 1953'		
					<b>Total Depth Deeper Filled up</b>	<b>1831' 6" 2446' 2006'</b>	



Formation	Color	Hard or Soft	Top	Bottom	Oil, Gas or Water	Depth Found	Remarks

*8 ft 8" from top  
 all 7"  
 2, 5, 78*

Date \_\_\_\_\_, 19\_\_\_\_  
 APPROVED \_\_\_\_\_, Owner  
 By \_\_\_\_\_ (Title)