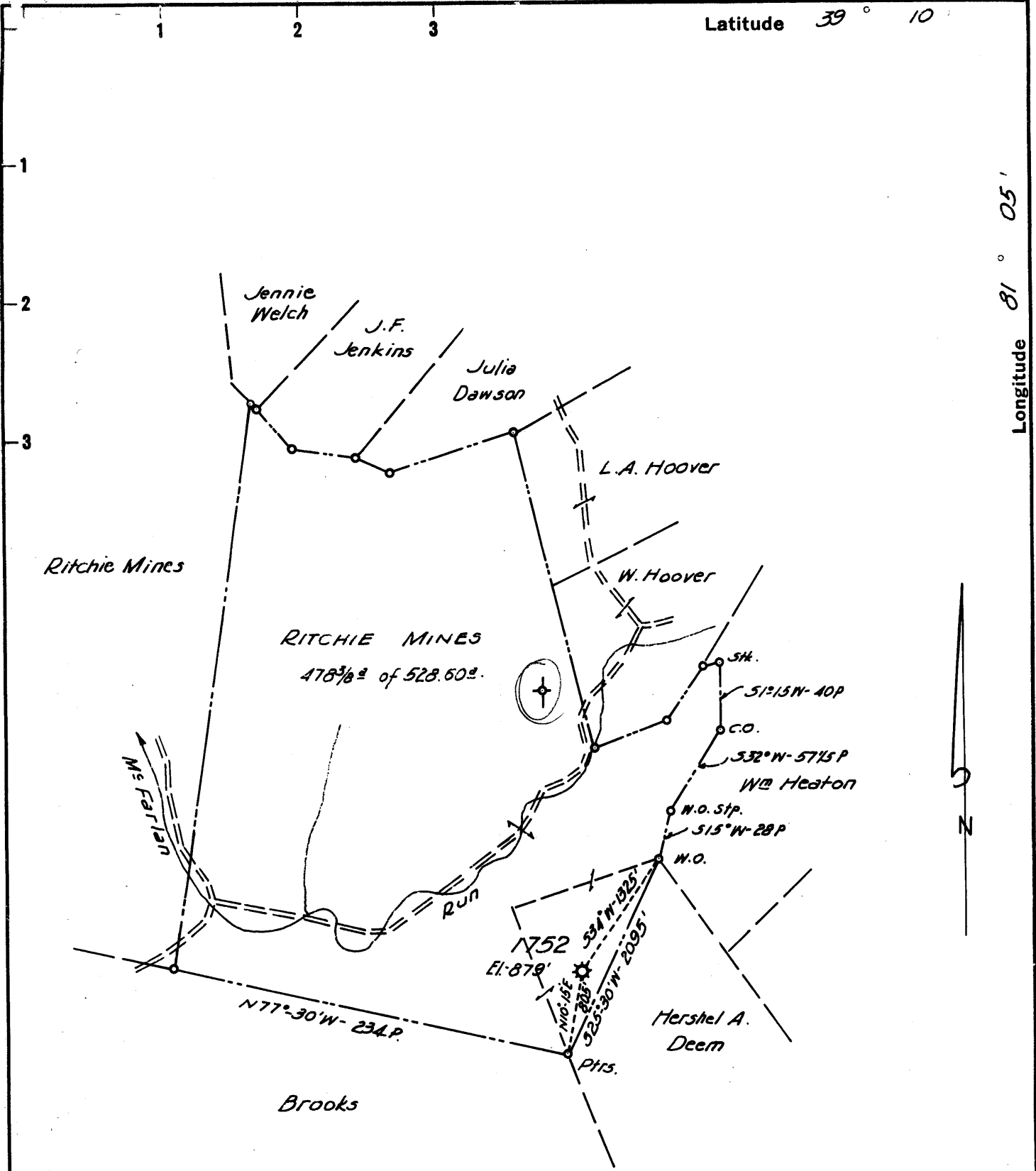


Latitude 39° 10'

Longitude 81° 05'



AUG 14 1960

Handwritten notes: 7.6 W and 5.10 with a signature.

New Location   
 Drill Deeper   
 Abandonment  1752 FORMERLY H.N.G. Co. WELL No 1752

Company P. & J. DEVELOPMENT Co.  
 Address HAMLIN, W. VA.  
 Farm RITCHIE MINES  
 Tract \_\_\_\_\_ Acres 528.60 Lease No. 20283  
 Well (Farm) No. \_\_\_\_\_ Serial No. 1752  
 Elevation (Spirit Level) 879'  
 Quadrangle HARRISVILLE  
 County RITCHIE District MURPHY  
 Engineer HENRY A. HAIN  
 Engineer's Registration No. 3150  
 File No. P&J. 11-60 Drawing No. \_\_\_\_\_  
 Date JULY 8, 1960 Scale 1" = 80 POLES

STATE OF WEST VIRGINIA  
 DEPARTMENT OF MINES  
 OIL AND GAS DIVISION  
 CHARLESTON

WELL LOCATION MAP  
 FILE NO. Rit-1324-A

+ Denotes location of well on United States Topographic Maps, scale 1 to 62,500, latitude and longitude lines being represented by border lines as shown.  
 - Denotes one inch spaces on border line of original tracing.

RITCHIE MINES No-1752 (Hain) - P. & J. DEVI Co. - RIT-1324-A



1168 #101

STATE OF WEST VIRGINIA  
DEPARTMENT OF MINES  
OIL AND GAS DIVISION

Quadrangle Harrisonville C

Permit No. 1374 A

WELL RECORD

Oil or Gas Well Gas  
(KIND)

Company Hope Natural Gas Co.  
 Address Clarksburg, W. Va.  
 Farm Ritchie Mines Acres 450  
 Location (waters) McFarlan Run  
 Well No. 1752 Elev. 879  
 District Murphy County Ritchie  
 The surface of tract is owned in fee by Ritchie Mines  
 Address \_\_\_\_\_  
 Mineral rights are owned by \_\_\_\_\_  
 Address \_\_\_\_\_  
 Drilling commenced Nov. 8, 1905  
 Drilling completed Nov. 27, 1905  
 Date Shot 12/13/05 From \_\_\_\_\_ To \_\_\_\_\_  
 With 60 qts.  
 Open Flow \_\_\_\_\_ /10ths Water in \_\_\_\_\_ Inch  
 \_\_\_\_\_ /10ths Merc. in \_\_\_\_\_ Inch  
 Volume \_\_\_\_\_ Cu. Ft.  
 Rock Pressure \_\_\_\_\_ lbs. \_\_\_\_\_ hrs.  
 Oil \_\_\_\_\_ bbls., 1st 24 hrs.  
 WELL ACIDIZED \_\_\_\_\_  
 WELL FRACTURED \_\_\_\_\_

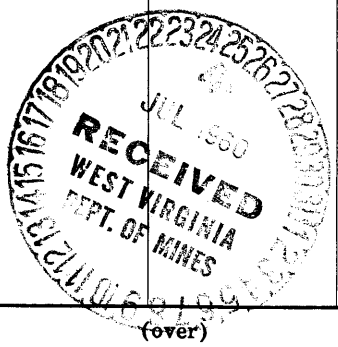
Casing and Tubing	Used in Drilling	Left in Well	Packers
Size			Kind of Packer <u>A</u>
16			
13			
10	<u>243' 5"</u>	<u>None</u>	Size of <u>5 x 3</u>
8 3/4	<u>1172' 9"</u>	<u>None</u>	
6 5/8	<u>1692' 6"</u>	<u>1692' 6"</u>	Depth set <u>2016</u>
5 3/16	<u>1989' 4"</u>	<u>1989' 4"</u>	
3			Perf. top _____
2	<u>2072' 3"</u>	<u>2072' 3"</u>	Perf. bottom _____
Liners Used			Perf. top _____
			Perf. bottom _____

CASING CEMENTED \_\_\_\_\_ SIZE \_\_\_\_\_ No. Ft. \_\_\_\_\_ Date \_\_\_\_\_

COAL WAS ENCOUNTERED AT \_\_\_\_\_ FEET \_\_\_\_\_ INCHES  
 \_\_\_\_\_ FEET \_\_\_\_\_ INCHES \_\_\_\_\_ FEET \_\_\_\_\_ INCHES  
 \_\_\_\_\_ FEET \_\_\_\_\_ INCHES \_\_\_\_\_ FEET \_\_\_\_\_ INCHES

RESULT AFTER TREATMENT \_\_\_\_\_  
 ROCK PRESSURE AFTER TREATMENT \_\_\_\_\_  
 Fresh Water \_\_\_\_\_ Feet Salt Water \_\_\_\_\_ Feet

Formation	Color	Hard or Soft	Top	Bottom	Oil, Gas or Water	Depth	Remarks
<b>Gas Sand</b>			<b>1693'</b>	<b>1810'</b>			
<b>Salt Sand</b>			<b>1860'</b>	<b>1950'</b>	<b>Oil 1920-30'</b> <b>Water 1930'</b>		
<b>Injun Sand</b>			<b>2085'</b>		<b>Gas 2088'</b>		
					<b>Total Depth</b>	<b>1933</b>	
					<b>Deeper</b>	<b>2091</b>	



JAN 3 1961

(over)