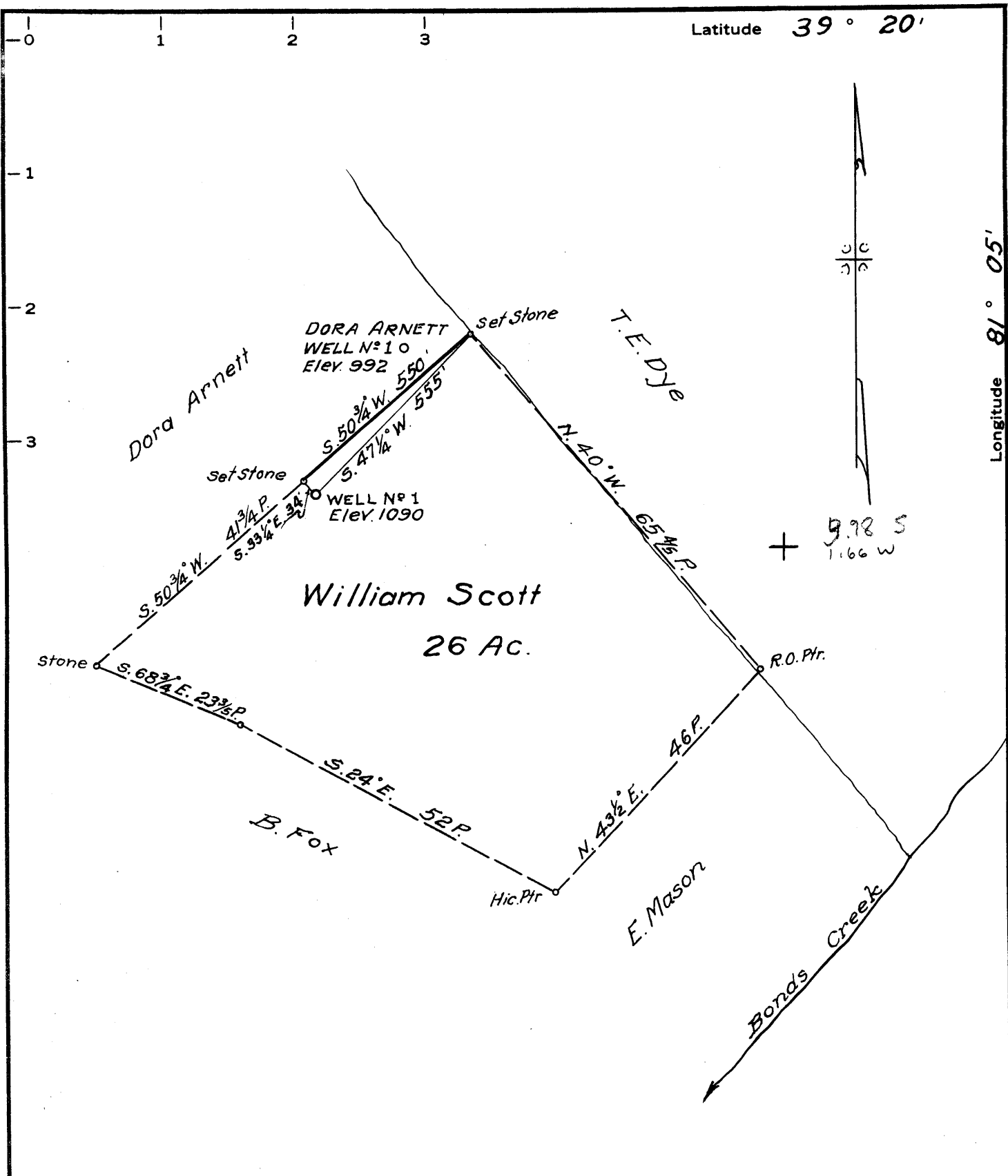


Latitude 39° 20'

Longitude 81° 05'



MINIMUM ERROR OF CLOSURE Less than 1/500  
 SOURCE OF ELEVATION Well No 1, Dora Arnett --- Elev. 992

New Location   
 Drill Deeper   
 Abandonment

"I, THE UNDERSIGNED, HEREBY CERTIFY THAT THIS MAP IS CORRECT TO THE BEST OF MY KNOWLEDGE AND BELIEF AND SHOWS ALL THE INFORMATION REQUIRED BY PARAGRAPH 6 OF THE RULES AND REGULATIONS OF THE OIL AND GAS SECTION OF THE MINING LAWS OF WEST VIRGINIA."

Company Horton Oil Co.  
 Address 727 1/2 Wells St., Sistersville, W Va.  
 Farm William Scott  
 Tract 1 Acres 26 Lease No. \_\_\_\_\_  
 Well (Farm) No. 1 Serial No. \_\_\_\_\_  
 Elevation (Spirit Level) 1090  
 Quadrangle St. Marys Nc  
 County Ritchie District Grant  
 Engineer Parker E. Peters  
 Engineer's Registration No. 485  
 File No. \_\_\_\_\_ Drawing No. \_\_\_\_\_  
 Date Dec 27, 1965 Scale 1" = 20P

STATE OF WEST VIRGINIA  
 DEPARTMENT OF MINES  
 OIL AND GAS DIVISION  
 CHARLESTON

WELL LOCATION MAP  
 FILE NO. Rit-1391-A

+ Denotes location of well on United States Topographic Maps, scale 1 to 62,500, latitude and longitude lines being represented by border lines as shown.

— Denotes one inch spaces on border line of original tracing.