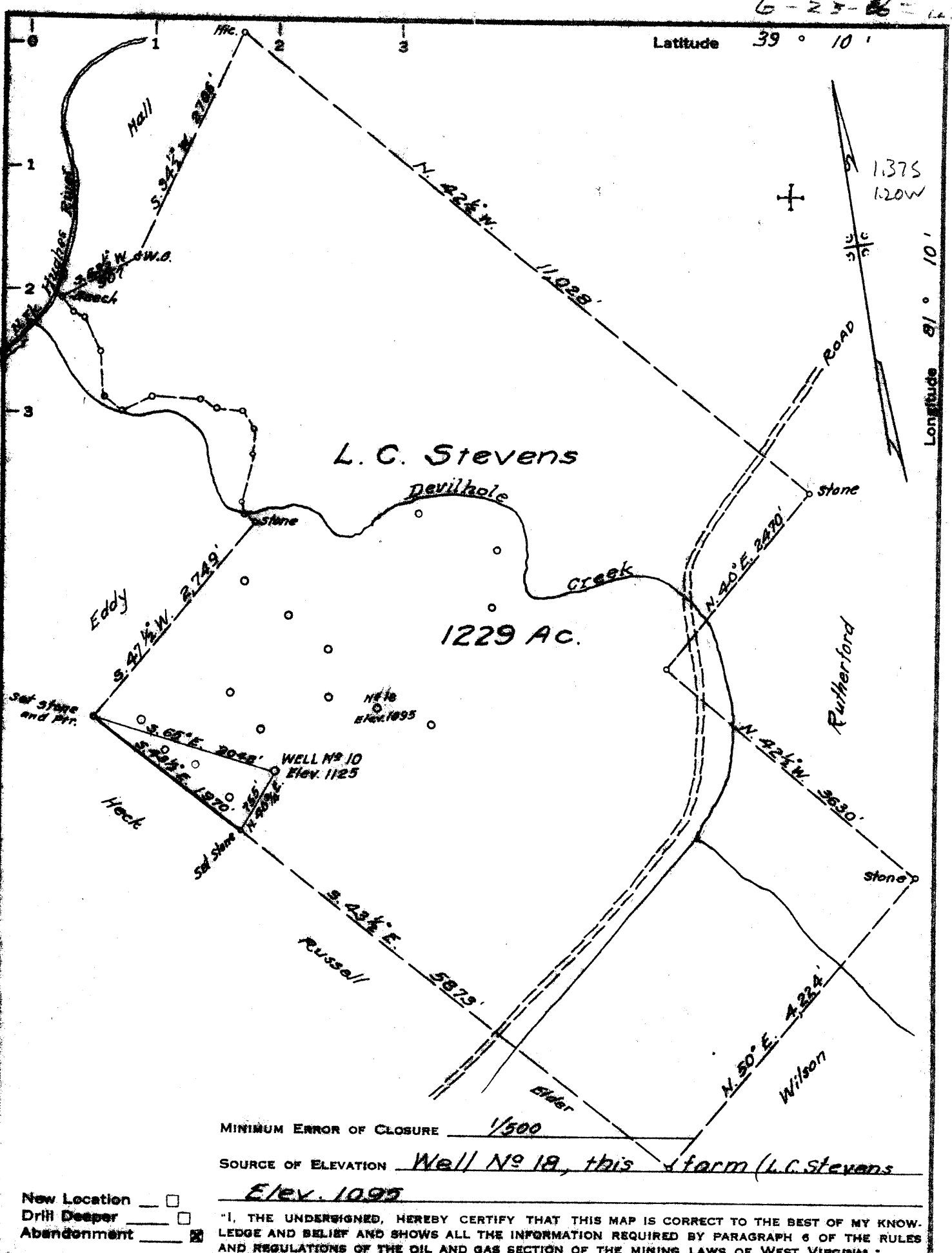


6-25-66-129



MINIMUM ERROR OF CLOSURE 1/500  
 SOURCE OF ELEVATION Well No 10, this farm (L.C. Stevens)  
Elev. 1095

New Location   
 Drill Deeper   
 Abandonment

"I, THE UNDERSIGNED, HEREBY CERTIFY THAT THIS MAP IS CORRECT TO THE BEST OF MY KNOWLEDGE AND BELIEF AND SHOWS ALL THE INFORMATION REQUIRED BY PARAGRAPH 6 OF THE RULES AND REGULATIONS OF THE OIL AND GAS SECTION OF THE MINING LAWS OF WEST VIRGINIA."

Company J. R. Welch  
 Address Harrisville, W. Va.  
 Farm L. C. Stevens  
 Tract 1 Acres 1229 Lease No. \_\_\_\_\_  
 Well (Farm) No. 10 Serial No. \_\_\_\_\_  
 Elevation (Spirit Level) 1125  
 Quadrangle Harrisville - WC  
 County Ritchie District Grant  
 Engineer Parker E. Patten  
 Engineer's Registration No. 485  
 File No. \_\_\_\_\_ Drawing No. \_\_\_\_\_  
 Date May 26, 1966 Scale 1" = 1320' (4" = 1 mile)

STATE OF WEST VIRGINIA  
 DEPARTMENT OF MINES  
 OIL AND GAS DIVISION  
 CHARLESTON

WELL LOCATION MAP  
 FILE NO. Bit-1495-A

+ Denotes location of well on United States Topographic Maps, scale 1 to 62,500, latitude and longitude lines being represented by border lines as shown.

- Denotes one inch spaces on border line of original tracing.