

New Location . SOURCE ELEV. FORKS ROAD S.W 747.00
 Drill Deeper
 Redrill
 Abandonment

"I, the undersigned, hereby certify that this map is correct to the best of my knowledge and belief and shows all the information required by paragraph 6 of the rules and regulations of the oil and gas section of the mining laws of West Virginia."

Company R.S. Oil & Gas
 Address 1630 Arnoldsburg Road, Spencer, WV 25276
 Farm SIDNEY WINES
 Tract _____ Acres 87 Lease No. _____
 Well (Farm) No. 1A Serial No. _____
 Elevation (Spirit Level) 867.42
 Quadrangle SPENCER 15E 7.5
 County ROANE District SPENCER
 Engineer L. J. Dyer
 Engineer's Registration No. 804
 File No. _____ Drawing No. _____
 Date 8-10-65 Scale 1" = 500'

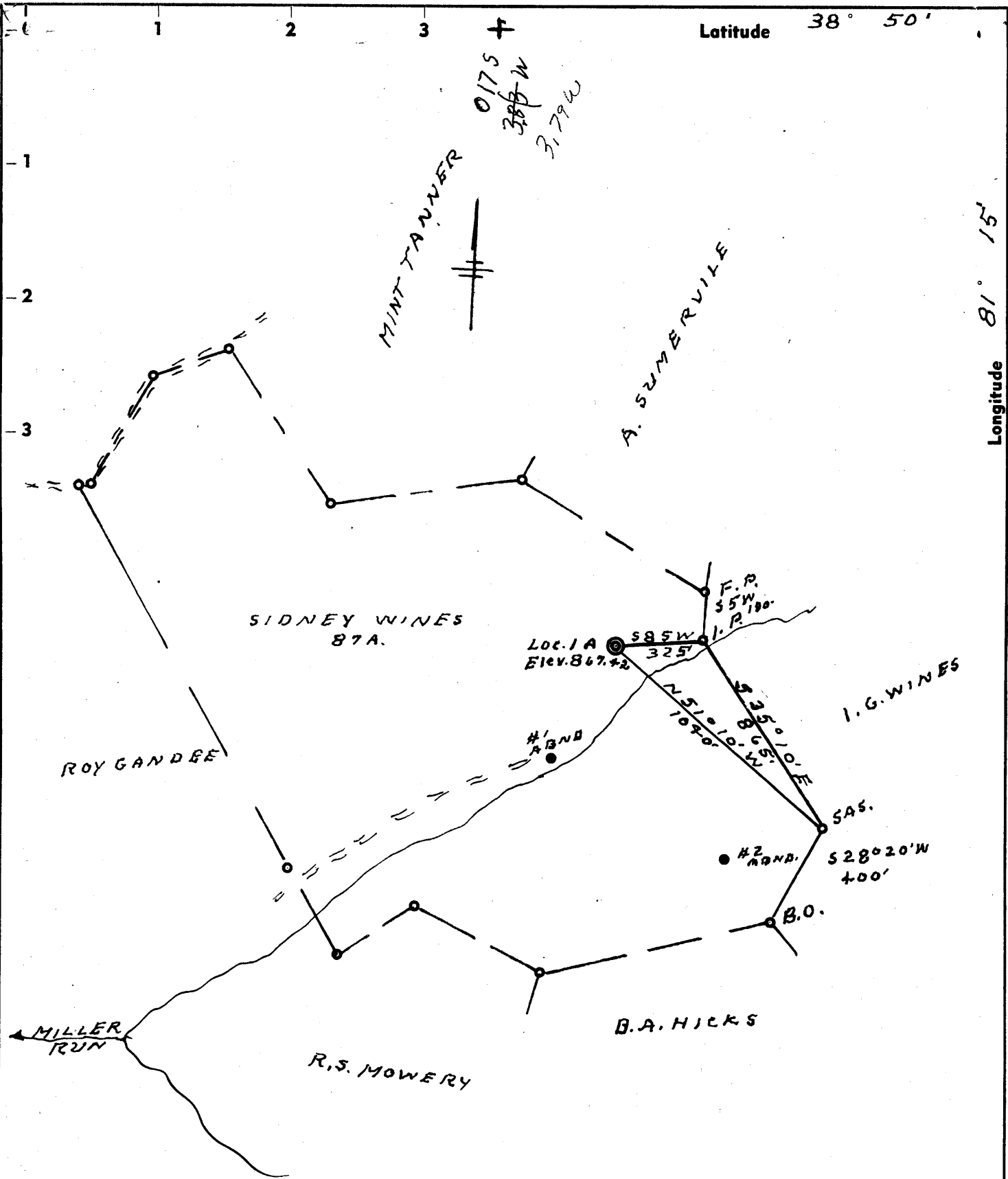
STATE OF WEST VIRGINIA
 DEPARTMENT OF MINES
 OIL AND GAS DIVISION
 CHARLESTON

WELL LOCATION MAP
API well no. 47-087-1212-P
plug. cancelled.

+ Denotes location of well on United States Topographic Maps, scale 1 to 62,500, latitude and longitude lines being represented by border lines as shown.

— Denotes one inch spaces on border line of original tracing.

ROANE 1212-P



ACCURACY 1" IN 200'

New Location . SOURCE ELEV. FORKS ROAD S.W. 747.00
 Drill Deeper
 Redrill "I, the undersigned, hereby certify that this map is correct to the best of my knowl-
 edge and belief and shows all the information required by paragraph 6 of the rules
 Abandonment and regulations of the oil and gas section of the mining laws of West Virginia."

Company J. & B. DRILLING & OPERATING CO. INC.
 Address SPENCER, W. VA.
 Farm SIDNEY WINES
 Tract _____ Acres 87 Lease No. _____
 Well (Farm) No. (1-A) Serial No. _____
 Elevation (Spirit Level) 867.42
 Quadrangle SPENCER-SE
 County ROANE District SPENCER
 Engineer L. J. Dyer
 Engineer's Registration No. 804
 File No. _____ Drawing No. _____
 Date 8-10-65 Scale 1" = 500'

STATE OF WEST VIRGINIA
 DEPARTMENT OF MINES
 OIL AND GAS DIVISION
 CHARLESTON
WELL LOCATION MAP
 FILE NO. ROA-1212

+ Denotes location of well on United States Topographic Maps, scale 1 to 62,500, latitude and longitude lines being represented by border lines as shown.
 — Denotes one inch spaces on border line of original tracing.

6-6-165



STATE OF WEST VIRGINIA
DEPARTMENT OF MINES
OIL AND GAS DIVISION 21

Minor faults

- Rotary
- Spudder
- Cable Tools
- Storage

Quadrangle Spencer

Permit No. ROA 1212

WELL RECORD

Oil or Gas Well Comb
(KIND)

Company J and B Drilling and Operating Co., Inc.
Address Box 58, Spencer, W. Va.
Farm Sidney Wines Acres 87
Location (waters) Millers Run
Well No. 1-A (6) Elev. 867.42'
District Spencer County Roane
The surface of tract is owned in fee by H. W. Wines, etal.
Address Spencer, W. Va.
Mineral rights are owned by H. W. Wines, etal
Address Spencer, W. Va.

Casing and Tubing	Used in Drilling	Left in Well	Packers
Size			Kind of Packer
16	24'		
13			
10	402'		Size of
8 1/4	1065'		
7 1/8	1944'		Depth set <u>2107</u>
5 3/16			
4 1/2	2107'	2107'	Perf. top <u>1850</u>
2			Perf. bottom <u>2075</u>
Liners Used			Perf. top
			Perf. bottom

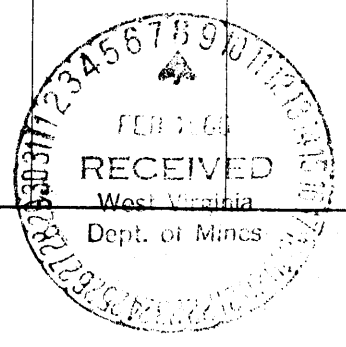
Drilling commenced 9/15/65
Drilling completed 9/20/65
Date Shot From To
With
Open Flow /10ths Water in Inch
/10ths Merc. in Inch
Volume Cu. Ft.
Rock Pressure lbs. hrs.
Oil bbls., 1st 24 hrs.
WELL ACIDIZED

CASING CEMENTED 4 1/2" SIZE 2107' No. Ft 9/21/65 Date
75 bags cement Well Service
COAL WAS ENCOUNTERED AT FEET INCHES
FEET INCHES FEET INCHES
FEET INCHES FEET INCHES

WELL FRACTURED 1/2 gal Allo, 30 gal F-40., 40 gal Freflo, 500 lbs J-84, 250 lbs J-111, 500 lbs Walnut Shells, and 36,000 lbs Sand.
RESULT AFTER TREATMENT 14 bbls. 42 MCF = Big Injun
ROCK PRESSURE AFTER TREATMENT 280 lbs.
Fresh Water Feet Salt Water Feet

Formation	Color	Hard or Soft	Top	Bottom	Oil, Gas or Water	Depth	Remarks
Top Soil			0	15			
Red Rock			15	35			
Slate			35	95			
Sand			95	150			
Slate & Shells			150	155			
Blue Sand			155	160			
Slate			160	175			
Red Rock			175	183			
Sand			183	195			
Red Rock			195	227			
Slate			227	235			
Sand			235	252			
Blue Slate			252	260			
Red Rock			260	265			
Slate			265	270			
Red Rock & Slate			270	326			
Sand			326	332			
Slate			332	355			
Red Rock			355	385			
Sand			385	398			
Slate			398	440			
Spotted Rock			440	450			
Blue Sand			450	465			
Blue Slate			465	470			
Red Rock			470	484			
Sand			484	504			
Spotted Rock			504	515			

(over)



Formation	Color	Hard or Soft	Top <i>21</i>	Bottom	Oil, Gas or Water	Depth Found	Remarks
Red Rock			515	540			
Broken Sand			540	555			
Red Rock			555	560			
Blue Sand			560	625			
Slate			625	647			
Red Rock			647	665			
Slate & Shells			665	675			
Red Rock			675	680			
Sand			680	695			
Spotted Rock			695	740			
Sand			740	758			
Blue Slate			758	785			
Slate			785	790			
Black Slate			790	807			
Slate & Shells			807	828			
Broken Sand			828	860			
Red Rock			860	880			
Slate & Shells			880	890			
Spotted Rock			890	930			
Broken Sand			930	950			
Blue Slate			950	988			
Broken Sand			988	1020			
White Sand			1020	1065			
Broken Sand			1065	1110			
Slate			1110	1130			
Blue Sand			1130	1155			
Slate			1155	1184			
Sand			1184	1255			
Slate & Shells			1255	1265			
Sand			1265	1300			
Slate			1300	1312			
Sand			1312	1341			
Slate			1341	1370			
Sand			1370	1408			
Slate			1408	1436			
Sand			1436	1485			
Slate			1485	1495			
Sand			1495	1510			
Limey Sand			1510	1548			
Shale			1548	1645			
White Sand			1645	1690			
Black Sand			1690	1728			
Limey Sand			1728	1790			
Sedding Sand			1790	1844			
<u>Little Lime</u>			1844	1868			
<u>Blue Monday Sand</u>			1868	1885			
<u>Big Line</u>			1885	1986			
Sand			1986	2009			
Shale			2009	2025			
Sand			2025	2032			
Slate			2032	2040			
Black Sand			2040	2113			

Date February 7, 1966
APPROVED Allen V. Beard, Owner
By President
(Title)