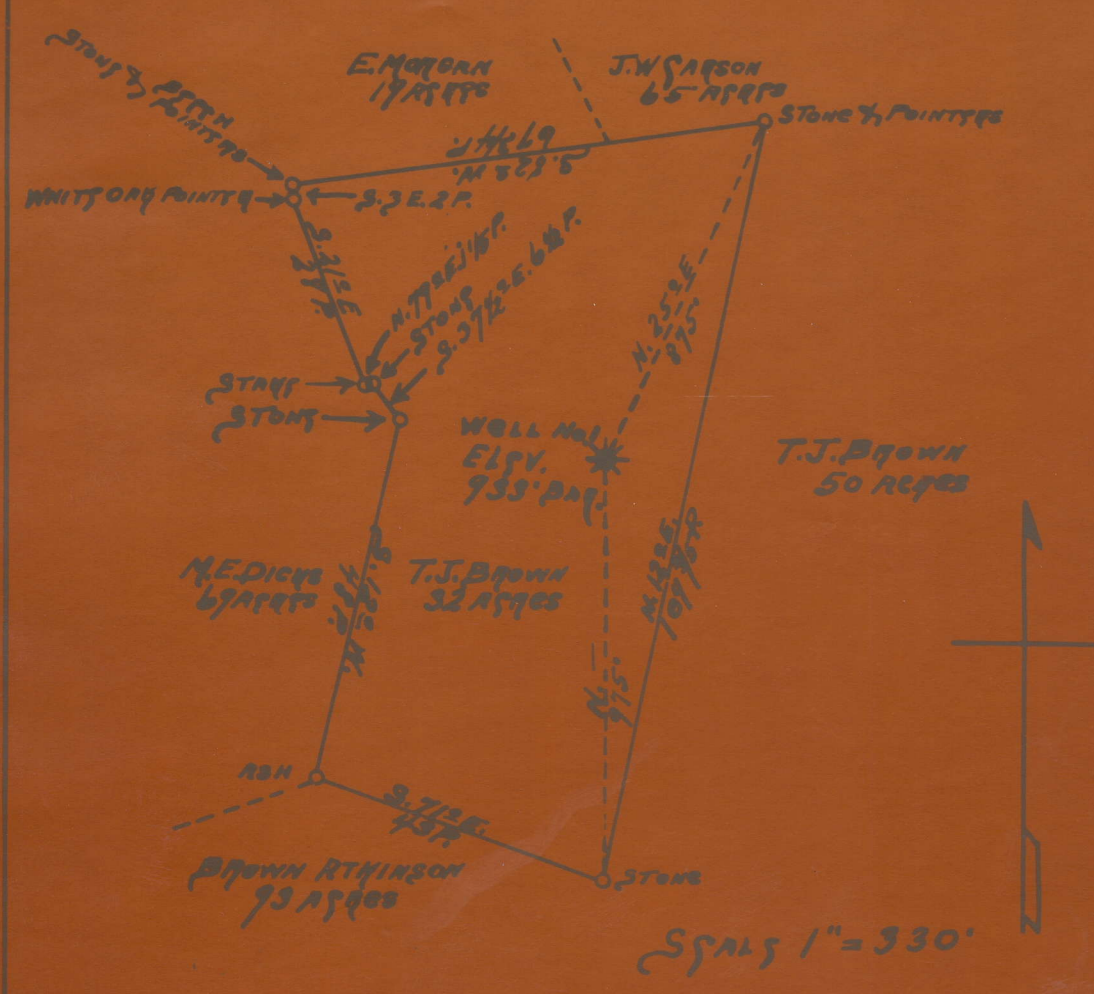


10  
 OF THE...  
 T. J. BROWN...  
 DISTRICT,...



CERTIFICATE.

I, THE UNDERSIGNED, HEREBY CERTIFY THAT THIS MAP IS CORRECT AND SHOWS ALL THE INTERESTS TO THE BEST OF MY KNOWLEDGE AND BELIEF, REQUIRED BY THE... OF THE... LAW.

Reedy District, Roane County, W. Va.  
 By The Heck Oil Co., Spencer, W. Va.  
 On 32 acres, surface owned by T. J. Brown, R. F. D., Reedy, W. Va.,  
 and mineral rights by T. J. Brown and M. E. Dicks, RFD, Reedy,  
 W. Va., and H. H. Swart, Scenery Hill, Pa.  
 Completed Jan. 22, 1926.

Elevation, 933' B.  
 13" conductor, 16' (left in); 10" casing, 883' (est. 475'--23 jts.--  
 pulled out--balance left in); 8 1/2", 1143' (all pulled out);  
 6-5/8" St. L., 2030 1/2' (all left in).  
 Oil Well Supply Co. gas anchor packer, 6 1/2 x 3", set at 2118'.  
 1 jt. 19' 7" long perforated and placed on bottom of 3" tubing.  
 116 jts., 2508' 7" tubing (gross measurement).  
 No liner used. Well was not shot.

Abandonment reported to Dept. of Mines Aug. 20, 1932.  
 Salt water at 1245' in Big Dunkard, and at 1870', hole full, in Salt Sand.

ROA-56-A

	Top.	Bottom.	NO LOCATION FOUND
No 1st Pittsburgh Sand	595		
2nd Pittsburgh Sand	625--	701	
Slate, white	701 -	703	
Sand, gray, hard	703 -	710	
Slate, white, soft	710 -	718	
Red rock, soft	718 -	731	
Lime shell, gray, hard	731 -	743	
Slate and shells, white	743 -	800	
Sand, white, soft	800 -	810	
Slate, white, soft	810 -	815	
Sand, gray, hard	815 -	828	
Slate and shells, white, soft	828 -	860	
Sand, white, soft	860 -	870	
Red rock, soft	870 -	882	
Shell, gray, hard	882 -	896	
Red rock, soft	896 -	906	
Shells, blue, hard	906 -	910	
Red rock, soft	910 -	920	
Lime, gray, hard	920 -	933	
Red rock, soft	933 -	944	
Slate and shells, white, hard	944 -	1003	
Red rock and shells, soft	1003 -	1052	
Little Dunkard Sand, gray, hard	1052 -	1108	
Slate, dark, soft	1108 -	1124	
Shell, blue, hard	1124 -	1129	
Slate, white, soft	1129 -	1140	
Sand, gray, hard	1140 -	1272	
Slate, white, soft	1272 -	1276	
Sand, white, soft	1276 -	1290	
Slate, black, soft	1290 -	1312	
Sand, white, hard	1312 -	1326	
Slate, white, soft	1326 -	1345	
Slate, black, soft	1345 -	1362	
Sand, white, hard (showing gas, 1364')	1362 -	1431	
Slate, dark, soft	1431 -	1468	
Sand, white, soft (showing oil, 1472')	1468 -	1600	
Slate, dark, soft	1600 -	1610	
Sand, white, soft	1610 -	1650	
Slate, light, soft	1650 -	1665	

(OVER)

T. J. BROWN NO. 1 WELL (Continued).

	Top.	Bottom.
Sand, white, soft	1665	1700
Slate, dark, soft	1700	1783
Salt Sand, light, hard	1783	2002
Big Lime, gray, hard	2002	2042
Big Injun Sand, gray, hard	2042	2090
Slate and shells, dark, soft	2090	2115
Tubing shell, light, hard	2115	2133
Slate and shell, light, hard and soft	2133	2466
Brown shale	2466	2478
Berea Grit, to bottom	2478	2490

604-24-A

Top	Bottom	Description
1665	1700	Sand, white, soft
1700	1783	Slate, dark, soft
1783	2002	Salt Sand, light, hard
2002	2042	Big Lime, gray, hard
2042	2090	Big Injun Sand, gray, hard
2090	2115	Slate and shells, dark, soft
2115	2133	Tubing shell, light, hard
2133	2466	Slate and shell, light, hard and soft
2466	2478	Brown shale
2478	2490	Berea Grit, to bottom

(OVER)

T. J. BROWN NO. 1 WELL.

56A

Reedy District, Roane County, W. Va.  
By Heck Oil Co.  
On 32 acres.  
Keller Map H-21.  
Elevation, 933' B.  
Completed Jan. 22, 1926.  
Gas well.  
From Heck's notes.

	Top.	Bottom.
Salt Sand (salt water, 1870', hole full)	1783	- 2002
Big Lime	2002	- 2042
Big Injun Sand	2042	- 2090
Slate and shells	2090	- 2115
Tubing shell	2115	- 2133
Slate and shells	2133	- 2466
Brown shale	2466	- 2478
Berea Sand	2478	- 2490
Total depth		2490