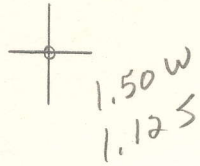


LATITUDE 38°50'00"



08, 41°18' LONGITUDE

7'5 OGIS topo location

7.5' loc _____ 15' loc _____
 _____ (calc.) _____

Company _____

Farm _____

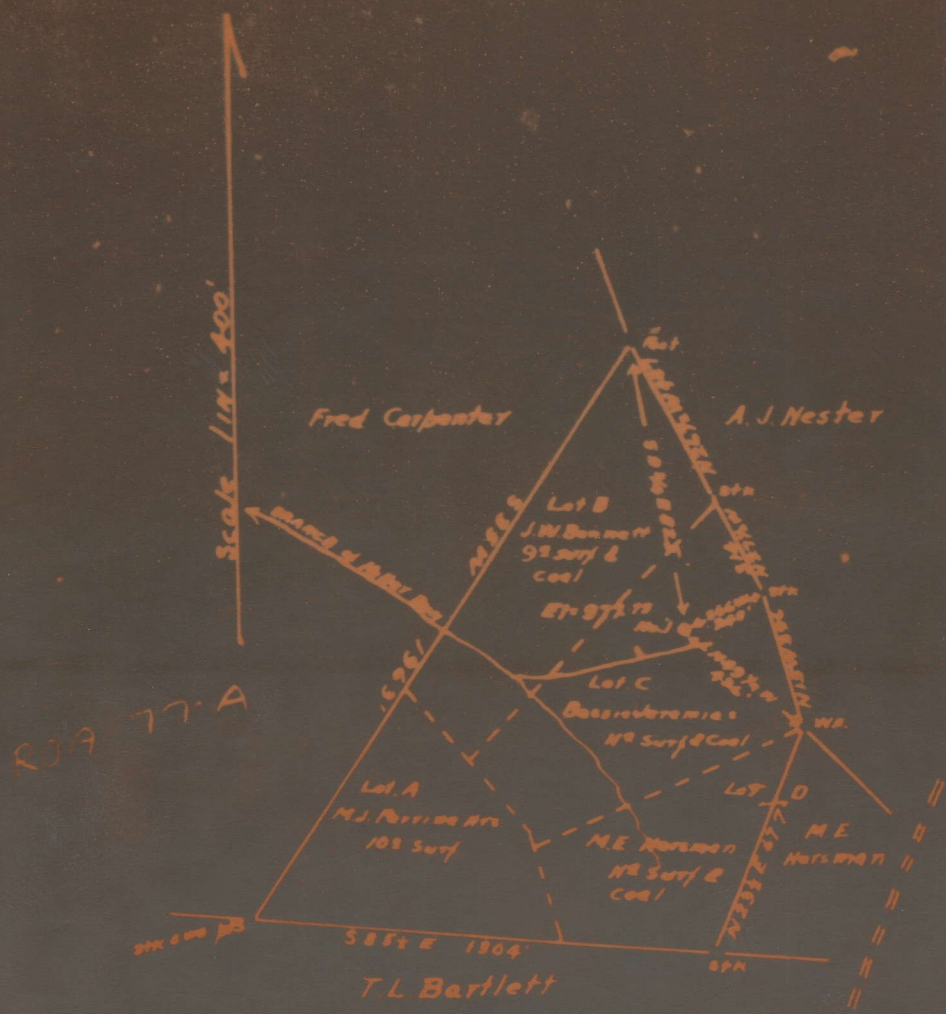
Quad Spencer 7 1/2'

County Roane

District Spencer

WELL LOCATION MAP

File No. 087-77A



Plat - survey for abandonment well No. 1 Perrine Hrs
 Spencer Dist, Roane Co W. Va
 Bessie Jeramias - address Beaver Rd

see microfilm for P&S

770

Spencer District, Roane County, W. Va.
 By South Penn Oil Co., P. O. Drawer 1255, Pittsburgh, Pa.
 On $3\frac{1}{2}$ acres, surface and mineral rights owned by M. Edward
 Hersman et al., Charleston, W. Va.
 Elevation, 977.73' L.
 14' conductor; 10" casing, 820'; $8\frac{1}{2}$ " 1120'; 6-5/8", 2008'.
 Packer, 6-5/8 x $8\frac{1}{2}$, set at bottom of hole.
 Abandonment reported to Dept. of Mines Dec. 2, 1933.
 Well was shot in Big Injun Sand with 40 qts., Nov. 26, 1919.
 Oil well.

(Branch of
 Miller Run)

49 acres

	Top.	Bottom.
Red rock	14	80
Slate	80	160
Lime	160	200
Slate	200	250
Red rock	250	290
Slate	290	320
Red rock	320	360
Lime	360	410
Slate and shells	410	500
Red rock	500	540
Slate	540	575
Sand	575	600
Red rock	600	650
Slate	650	665
Red rock	665	700
Sand	700	760
Slate	760	805
Red rock	805	825
Slate	825	830
Red rock	830	850
Lime	850	875
Sand	875	950
Red rock	950	965
Slate and shells	965	1120
Big Dunkard Sand	1120	1205
Slate and shells	1205	1380
Sand	1380	1435
Slate and shells	1435	1580
Sand	1580	1620
Slate and shells	1620	1726
Salt Sand (show oil, 1730'; gas, 1730'; water, 1826')	1726	1947
Little Lime	1947	1974
Sand	1974	1990
Big Lime	1990	2097
Keener Sand	2097	2113
Slate	2113	2134
Big Injun Sand (oil, 2134')	2134	2143
Total depth		2144