

LATITUDE 30°52'30"

0.71W
0.92S

1100/51/18 LONGITUDE

7'5 OGIS topo location

7.5' loc _____ 15' loc _____
(calc.) _____

Company _____

Farm _____

Quad Spencer 7 1/2'

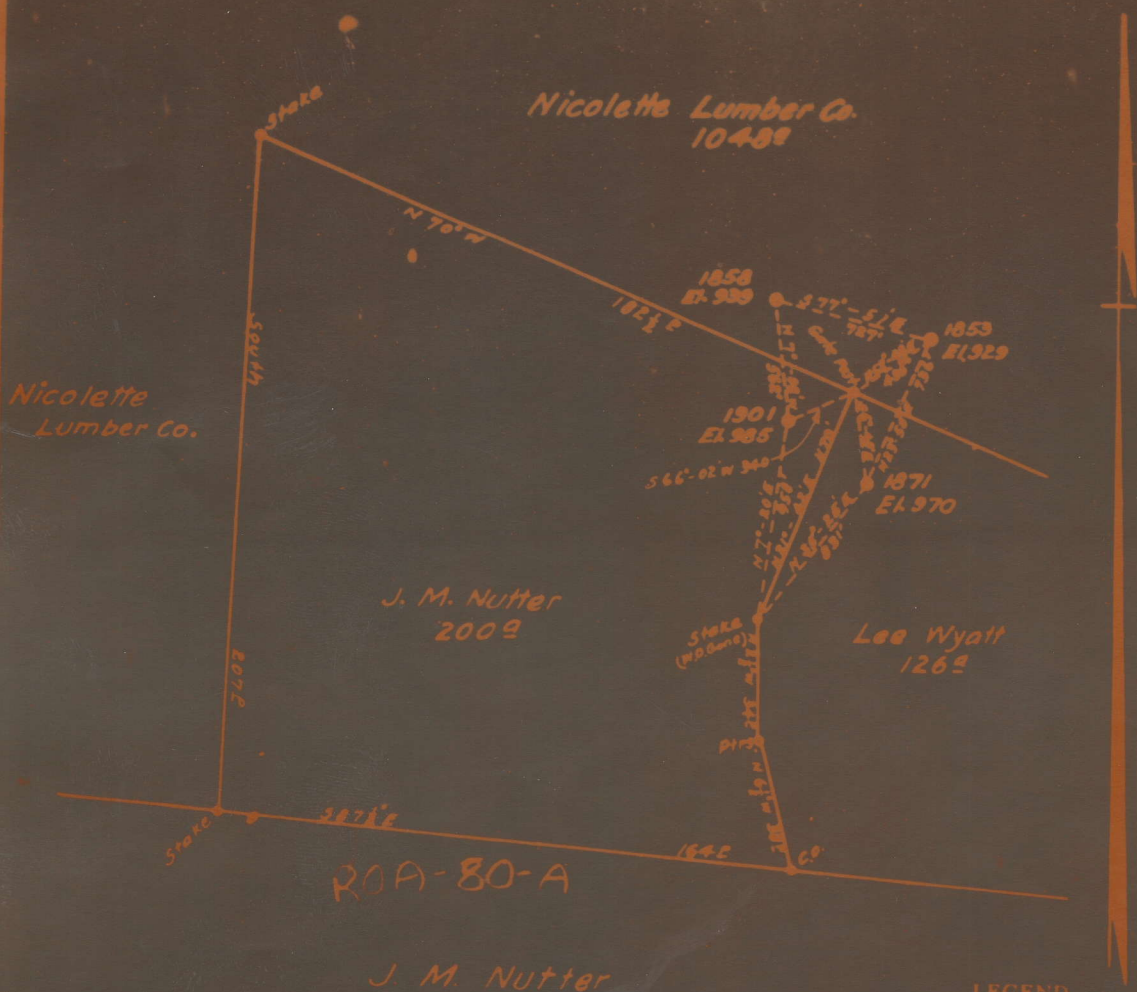
County Roane

District Spencer

WELL LOCATION MAP

File No. 087-80A

WELLS NO. 1853, 1871, 1871 & 1901
HOPE CONSTRUCTION & REFINING CO. of the
NICOLETTE LUMBER CO., LEE WYATT & J. M. NUTTER, Charlottesville, W. Va., on the
SPENCER District ROANE Farm consisting of — Acre
County, W. Va.



Well No 1901 Abandoned Jan. 1934.

- LEGEND
- Location
 - Oil Well
 - ⊙ " " Aband.
 - ⊕ Gas Well
 - ⊗ " " Aband.
 - ⊖ Dry Hole
- Field Book No 562 P 2526
Scale 1" = 40' more
Jan. 5, 1934

ENGINEER'S CERTIFICATE

80A

Spencer District, Roane County, W. Va.
 Hope Construction & Refining Co., 445 W. Main St., Clarksburg, W. Va.
 On 200 acres, surface and mineral rights owned by J. M. Nutter,
 Triplett, W. Va.
 Elevation, 985' L.
 6-5/8" casing, 1950'.
 Abandonment reported to Dept. of Mines Jan. 10, 1934.
 Well was shot at 2457'.
 Salt water at 1810'.
OIL well; now exhausted to extent that it is no longer commercially
 productive.

	Top.	Bottom.	Thickness.
Dunkard Sand	1155	- 1368	213
Salt Sand (water, 1810')	1790	- 1840	50
Little Lime (water, 1810')	1880	- 1905	25
Pencil Cave	1905	- 1920	15
Big Lime	1920	- 2045	125
Big Injun Sand	2045	- 2065	20
Berea sand (oil, 2457')	2443	- 2472	29
Total depth		2472	