


LATITUDE 38°47'30"


7½' approx
Loc.

11 00, SE 18 LONGITUDE

7'5 OGIS topo location

7.5' loc _____ 15' loc _____
 _____ (calc.) _____

Company _____

Farm _____

Quad Penit 7½'

County Roane Curtis

District Curtis

WELL LOCATION MAP

File No. 087-85A

NO LOCATION
FOUND

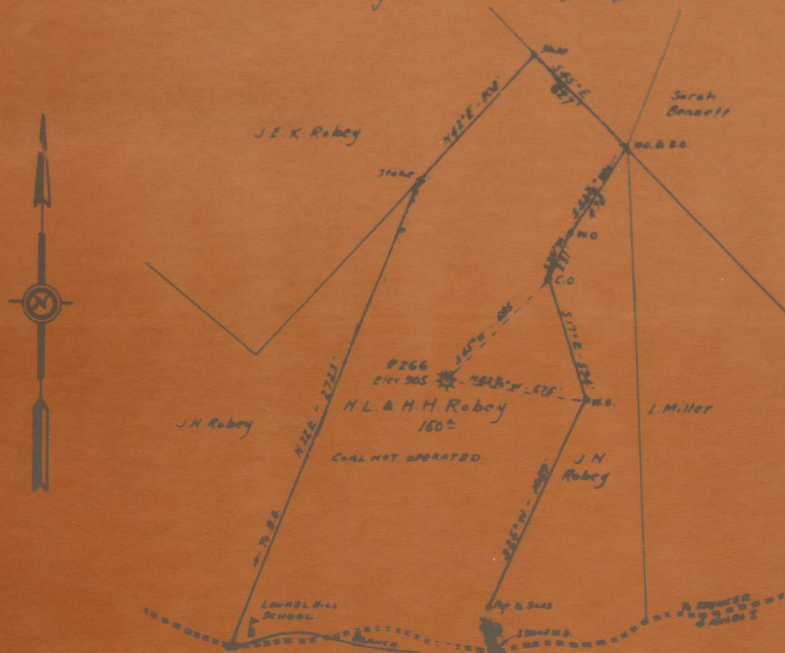
I, the undersigned, hereby certify that this map is correct and shows all the information to the best of my knowledge and belief, required by the Oil and Gas Section of the Mining Laws of West Virginia.

G. A. Cunningham
Engineer

Acknowledged before me, a Notary Public of Kanawha County, W. Va.

this 4 day of May 1934.

My Commission expires May 2, 1940 J. J. Martin



ROA-85-A

H.L. & H.H. Robey
Well No. 266
Curtis District
Roane County, W. Va.
May 4, 1934

UNITED FUEL GAS CO.
MAP SHOWING
WELL TO BE ABANDONED
SCALE :- 1 INCH = 660 FEET

MAY 6 - 1934

85A

Curtis District, Roane County, W. Va.
 By United Fuel Gas Co., Charleston, W. Va.
 On 160 acres, surface and mineral rights owned by Gay Stalnaker,
 Spec. Rec., et al., Spencer, W. Va.
 Drilled previous to June 1, 1929.
 Elevation, 852' B.
 13" conductor, 16'; 6-5/8" casing, 2015'.
 Larkin packer, 3 x 6-5/8, set at 2027'.
 Abandonment reported to Dept. of Mines May 5, 1934.
 Well was shot at 2455-2462'.
 Salt water at 1700'.
 Gas well.

(Lamel Hill)
School

	Top.	Bottom.	Thickness.
Pittsburgh Sand	460	- 530	70
Slate and shells	530	- 988	458
1st Cow Run Sand	988	- 1073	85
2nd Cow Run Sand	1093	- 1133	40
Gas Sand	1234	- 1324	90
Salt Sand (water, 1700')	1660	- 1913	253
Little Lime	1913	- 1960	47
Big Lime	1960	- 2053	93
Big Injun Sand	2053	- 2068	15
Slate and shells	2068	- 2450	382
Berea Grit (1st gas, 2455')	2450	- 2462	12
Total depth			2514