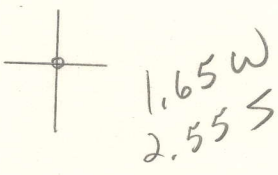


LATITUDE 38° 57' 30"

LONGITUDE 80° 58' 18"



7'5 OGIS topo location

7.5' loc _____ 15' loc _____
 _____ (calc.) _____

Company _____

Farm _____

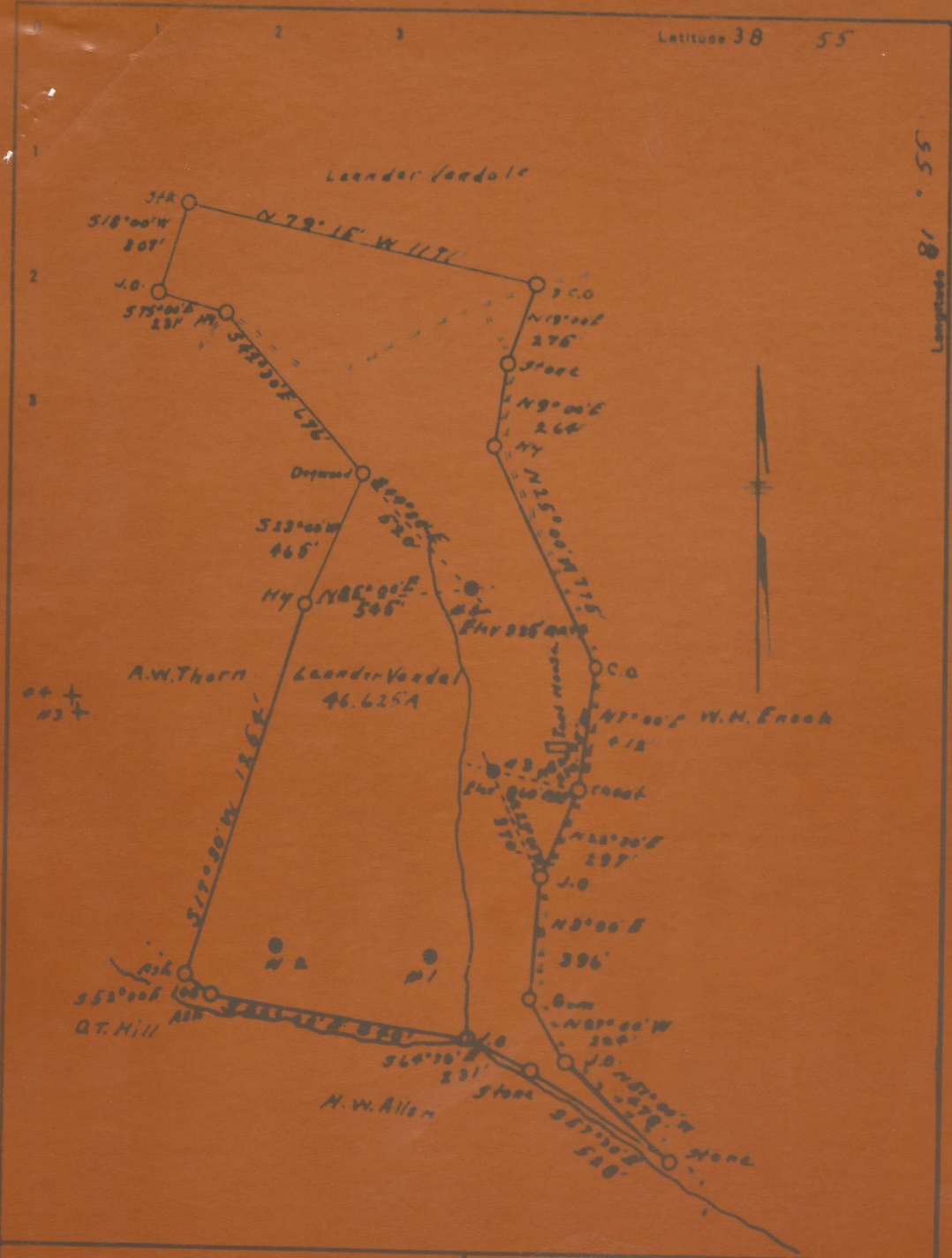
Quad Reedy 7 1/2'

County Roane

District Reedy

WELL LOCATION MAP

File No. 087-138A



Company H.E. Miller & Co.
 Address Kayserburg, Pa.
 Farm Laender Vandal
 T. 4105

STATE OF WEST VIRGINIA
 DEPARTMENT OF MINES
 OIL AND GAS DIVISION
 CHARLESTON

VANDALE, LEANDER, NO. 1142.

Roa-138-A.

By H. E. Milliken.

Reedy Dist.

See microfilm for
Plat

Well record hard to read