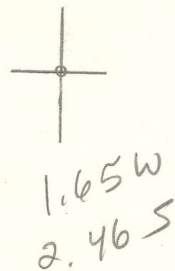


LATITUDE 38° 45'



LONGITUDE 81° 25'

7'5 OGIS topo location

7.5' loc _____ 15' loc _____
(calc.) _____

Company _____

Farm _____

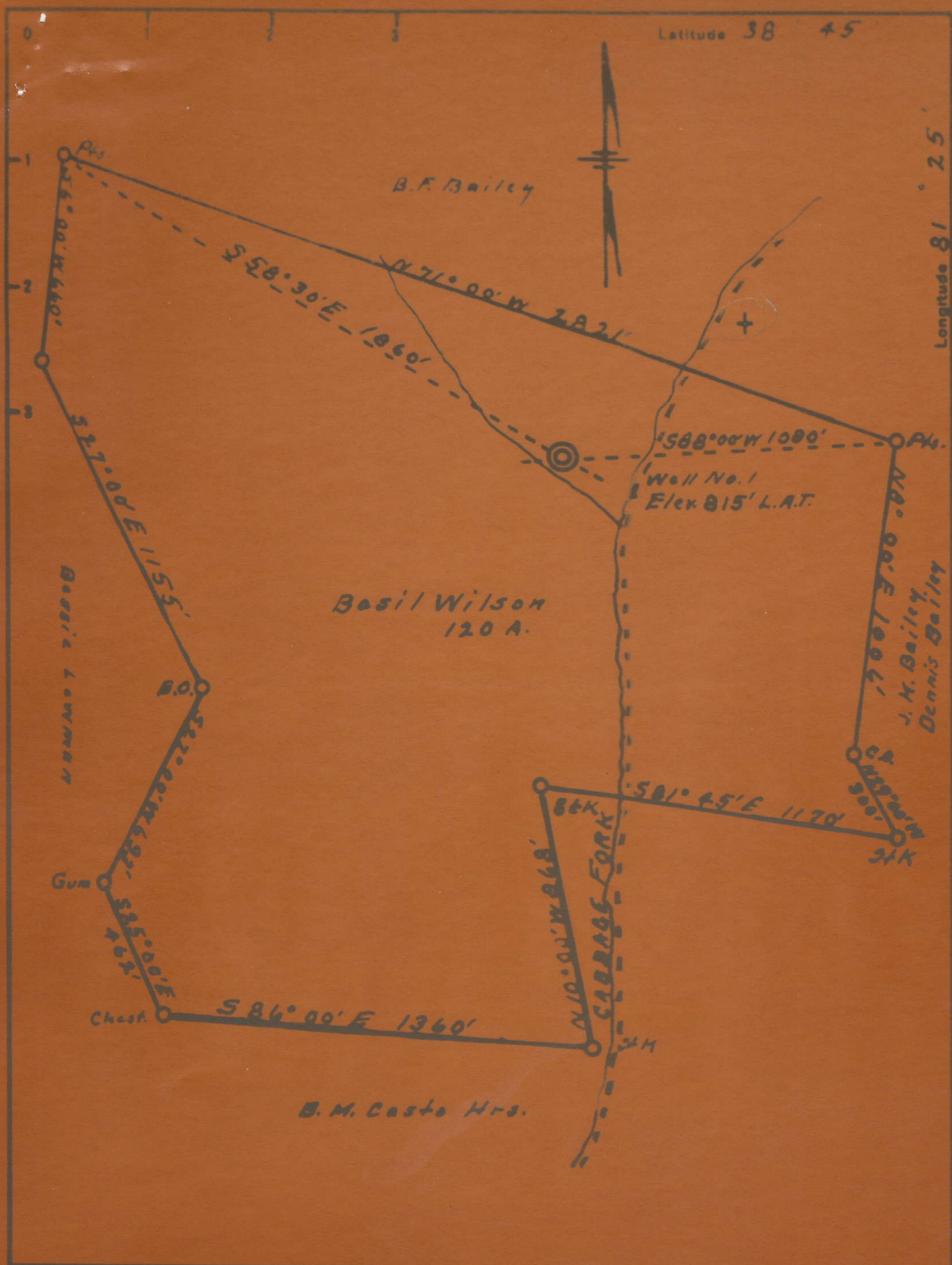
Quad Walton 15' (NW)

County Roano

District Harper

WELL LOCATION MAP

File No. 087-143A



Company S. M. Currey & Co.
 Address Zona, W. Va.
 Farm Basil Wilson
 Tract 120 Acres _____ Lease No. _____

STATE OF WEST VIRGINIA
 DEPARTMENT OF MINES
 OIL AND GAS DIVISION
 CHARLESTON

WILSON, BASIL, NO. 1.

Roa-143-A.

By McMurray & Simms.

...Harper... Dist. (Listed as Roane)

(Cabbage Fork)

See microfilm
for Plot

Well record hard to read