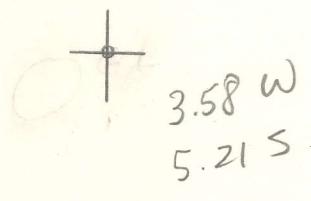


LATITUDE 39°00'

150.18 LONGITUDE



7'5 OGIS topo location

7.5' loc \_\_\_\_\_ 15' loc \_\_\_\_\_  
 (calc.) \_\_\_\_\_

Company \_\_\_\_\_

Farm \_\_\_\_\_

Quad Spencer 15' (NW)

County Ross

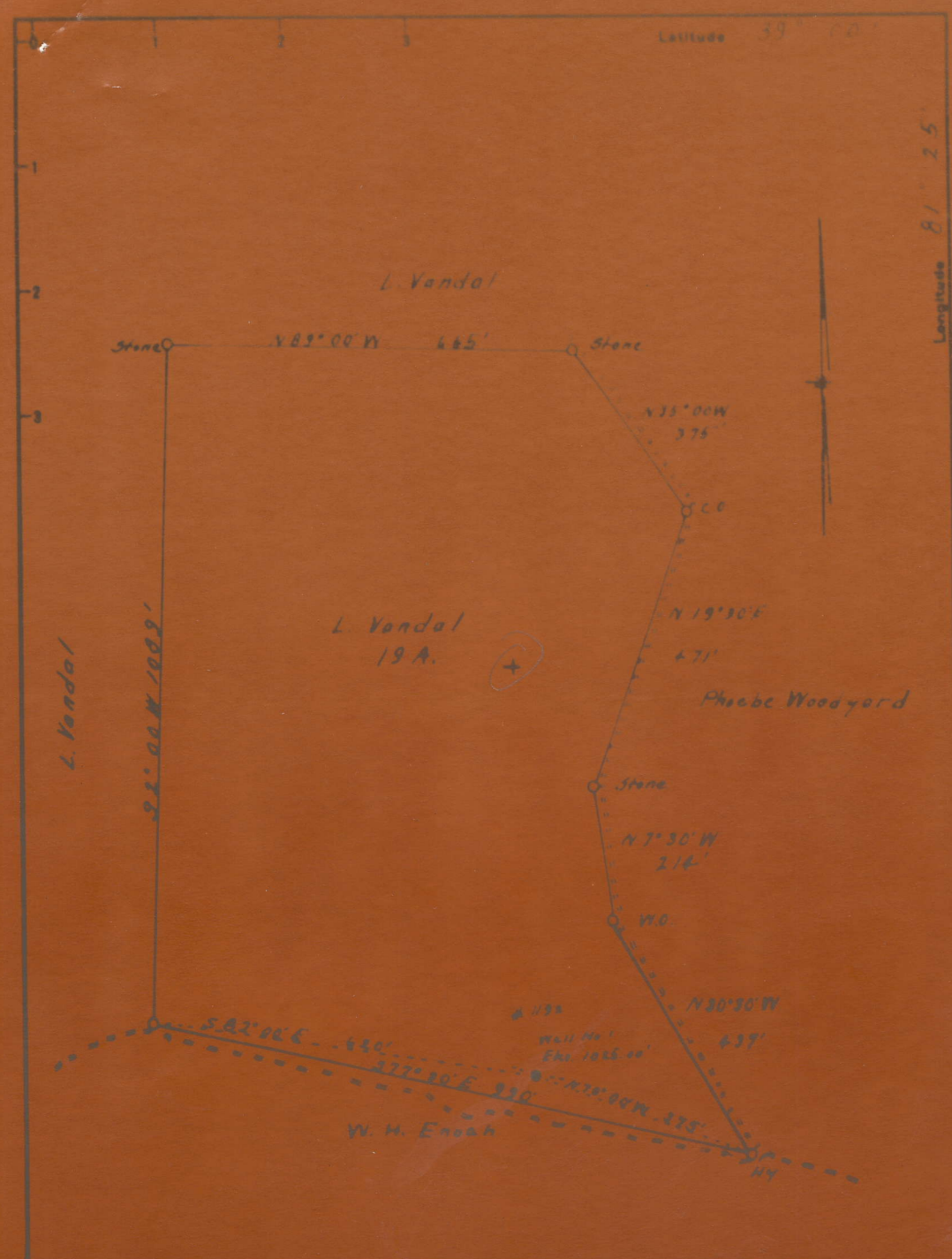
District Needy

WELL LOCATION MAP

File No. 087-164A

Latitude 39° 00'

Longitude 81° 25'



Company H. E. MILLNER  
 Address Waynesburg, Pa.  
 Farm L. Vandal  
 Tract 19 Acres \_\_\_\_\_ Lease No. \_\_\_\_\_

STATE OF WEST VIRGINIA  
 DEPARTMENT OF MINES  
 OIL AND GAS DIVISION  
 CHARLESTON

VANDAL, LEANDER, NO. 1192. (19 acres) Roa-164-A.

By H. E. Milliken.

Spencer Dist.

~~(NO PLAT)~~

See microfilm  
for Plat

See microfilm for Well record  
(hard to read)