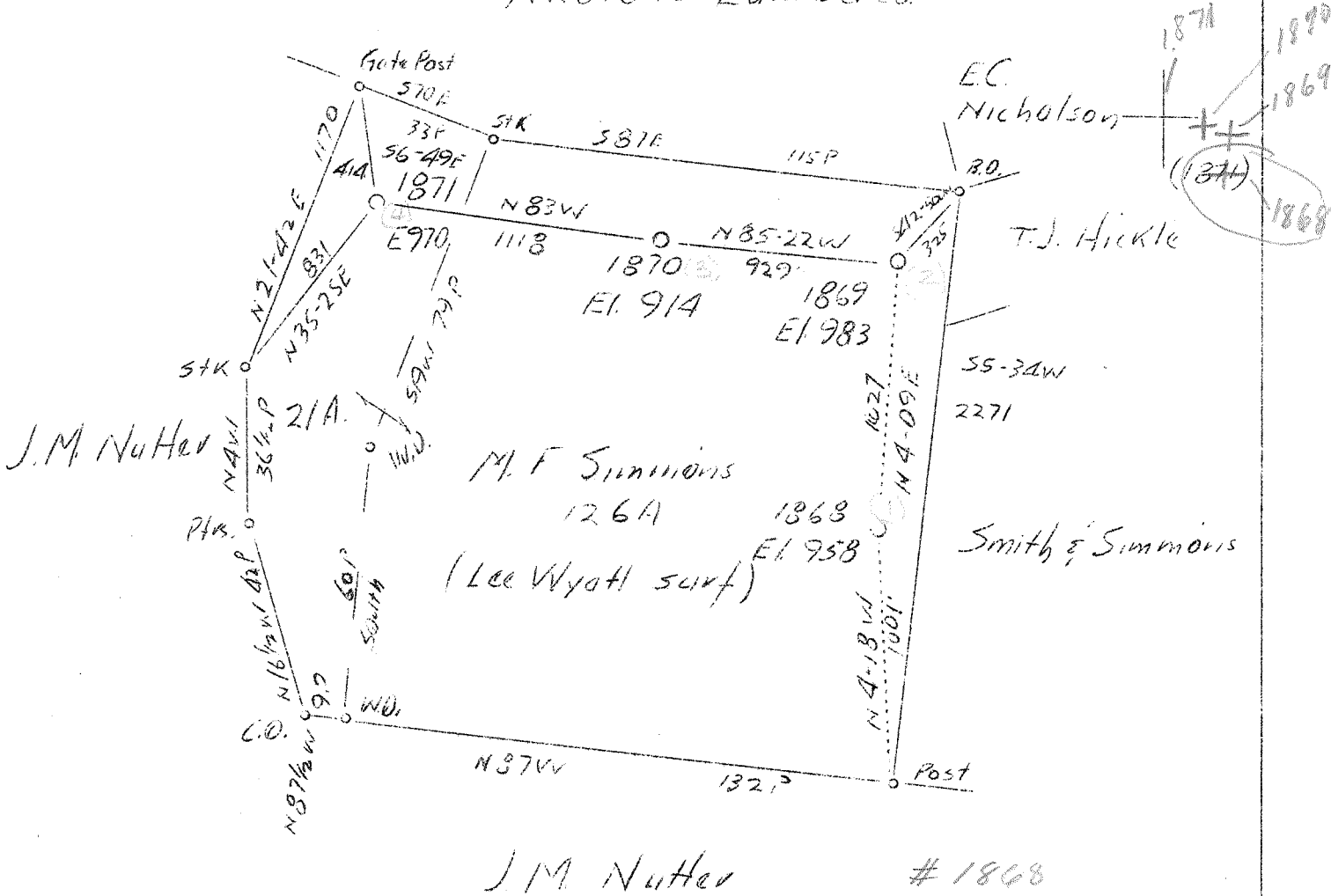


Nicolette Lumber Co.



J.M. Nutter

1868

4.20 S
22W

Abd 1868

Company	Heco Const. & Refining Co.
Address	Clarksburg, W.Va.
Farm	M.F. Simmons
Tract	Acres 147 Lease No. 5931
Well (Farm) No.	Serial No. 1868, 1869, 1870, 1871
Elevation (Spirit Level)	958, 983, 914, 970
Quadrangle	Spencer EC.
County	Roane District Spencer
Engineer	J.A. Clark
Engineer's Registration No.	744
File No.	Drawing No.
Date	Nov. 15, 1937 Scale 1"-40 Poles

STATE OF WEST VIRGINIA
Department of Mines
OIL AND GAS DIVISION
CHARLESTON

WELL LOCATION MAP

File No. RCA-166A
#1 (1868)

+ Denotes location of well on United States Topographic Maps, scale 1 to 62,500, latitude and longitude lines being represented by border lines as shown.

— Denotes one inch spaces on border line of original tracing.

Was 70266

M. F. SIMMONS NO. 1 WELL.

Spencer District, Roane County, W. Va.
By Carter Oil Co.
On 147 acres.
Keller Map I-22.
Elevation.....
Completed May 30, 1908.
Oil well. 5 bbls. (R?)
On West Fork.
S. P. - S-40 - W-37.
From Heck's notes.

~~70266~~

Now 30166

	Top.	Bottom.
Big Lime	1925	2035
Big Injun Sand	2050	2085
Berea Sand (gas, 2490-2498')	2475	2505
Total depth		2513

^{HNG (1869)}
M. F. SIMMONS NO. 2 well.

Oil well. (R?)

~~70267~~

Now 30292

^{HNG (1870)}
M. F. SIMMONS NO. 3 WELL.

Oil well. (R?)

~~70268~~

Now 30441

^{HNG (1871)}
M. F. SIMMONS NO. 4 WELL.

Oil well. (R?)

~~70269~~

Now 30237

Location on
Spencer 15'

M. F. SIMMONS NO. 1 WELL.

Spencer District, Roane County, W. Va.
By Carter Oil Co.
On 147 acres.
Keller Map I-22.
Elevation.....
Completed May 30, 1908.
Oil well. 5 bbls. (R?)
On West Fork.
S. P. - S-40 - W-37.
From Heck's notes.

166A

70266

See microfilm
for complete
well record

	Top.	Bottom.
Big Lime	1925	2035
Big Injun Sand	2050	2085
Berea Sand (gas, 2490-2498')	2475	2505
Total depth		2513

^{HNG}
(1869)
M. F. SIMMONS NO. 2 well.

70267 292A

Oil well. (R?)

^{HNG}
(1870)
M. F. SIMMONS NO. 3 WELL.

70268
441A? 8 7

Oil well. (R?)

^{HNG}
(1871)
M. F. SIMMONS NO. 4 WELL.

70269

Oil well. (R?)