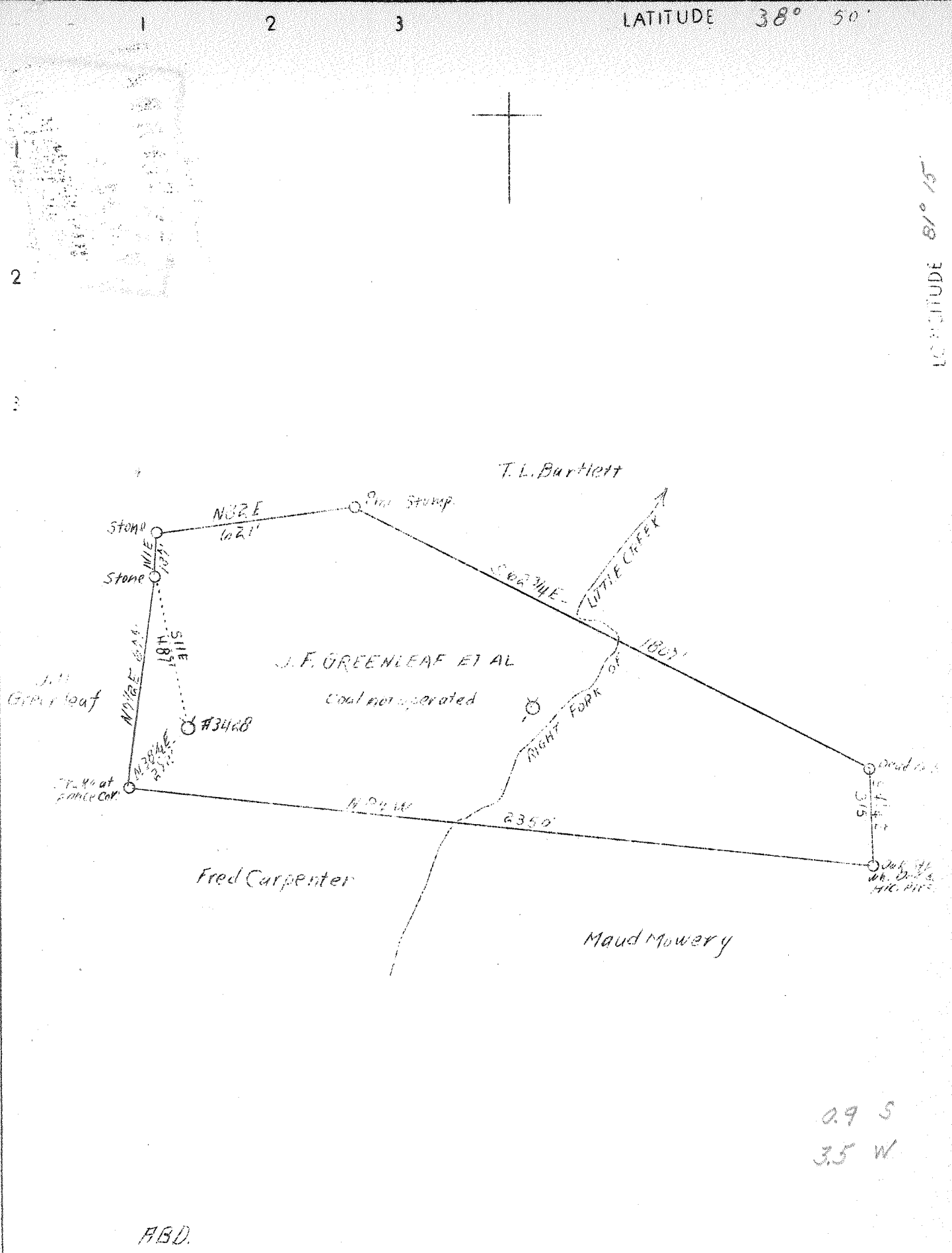


LATITUDE 38° 50'

LONGITUDE 81° 15'



0.9 S
3.5 W

ABD.

Company	Virginian Gasoline & Oil Co.
Address	Charleston, W.Va.
Farm	J.F.Greenleaf et al
Tract	Acres 37 Lease No. 27235
Well (Farm) No.	2 Serial No. 5428
Elevation (Spirit Level)	976'
Quadrangle	Spencer S.E.
County	Roane District Spencer
Engineer	G.A.Cunningham
Engineer's Registration No.	659
File No.	78-91 Drawing No.
Date	May 13, 1938 Scale 1"-400'

STATE OF WEST VIRGINIA
 Department of Mines
 OIL AND GAS DIVISION
 CHARLESTON

WELL LOCATION MAP
 File No. 78-91-189-A

Denotes location of well on United States Topographic Maps, scale 1 to 62,500, latitude and longitude lines being represented by border lines as shown.

Denotes one inch spaces on border line of original tracing.

Spencer District, Roane County, W. Va.

By Virginian Gasoline & Oil Co., Charleston, W. Va.

On 37 acres, on Right Fork of Little Creek.

Elevation, 976.0' L.

Surface and minerals owned by J. F. Greenleaf et al., Spencer, W. Va.

Drilling commenced 3-15-18; completed, 4-21-18.

Shot 4-24-18.

Oil, 10 bbls., 1st 24 hrs.

Salt water at 1740-1780 and 1780-1805'.

16" wood conductor, 15'; 10" casing, 820' (300' left in);

8 $\frac{1}{2}$ " casing, 1220' (pulled); 6 $\frac{3}{8}$ " casing, 2012' (left in).

Oil well. Abandonment reported to Dept. of Mines May 13, 1938.

Record to RCT from Mrs. Griffith May 27, 1938.

	Top.	Bottom.
Conductor	0	15
Red rock	15	210
Lime	210	250
Mt. Sand	250	350
Red rock shell	430	900
Big Dunkard Sand	1160	1220
Salt Sand (water. 1740'; big water, 1780')	1220	1740
Big Lime	1805	2000
Break slate	2000	2100
Keener Sand	2100	2115
Big Injun Sand	2115	2146
Total depth		2146

WEST VIRGINIA DEPARTMENT OF MINES
OIL AND GAS DIVISION

WELL RECORD

178

Permit No. 189A-189-A

Oil or Gas Well Oil
(Kind)

Company Virginian Gasoline & Oil Co.
 Address Charleston, W. Va.
 Farm J. F. Greenleaf et al Acres 37
 Location (waters) Rt. Fk. of Little Cr.
 Well No. 3428 Elev. 9760
 District Spencer County Roane
 The surface of tract is owned in fee by J. F. Greenleaf et al
 Address Spencer, W. Va.
 Mineral rights are owned by J. F. Greenleaf et al
 Address Spencer, W. Va.
 Drilling commenced 3-15-18
 Drilling completed 4-21-18
 Date shot 4-24-18 Depth of shot -
 Open Flow /10ths Water in Inch
 /10ths Merc. in Inch
 Volume Cu. Ft.
 Rock Pressure lbs. hrs.
 Oil 10 bbls., 1st 24 hrs.
 Fresh water feet feet
 Salt water 1740-1780 feet 1780-1805 feet

Casing and Tubing	Used in Drilling	Left in Well	Packers
Size			
16. Wood	15	15	Kind of Packer
13. <u>10" Csg.</u>	820	300	Size of
8 1/4	1220	0	Depth set
6 5/8	2012	2012	Perf. top
5 3/16			Perf. bottom
3			Perf. top
2			Perf. bottom
Liners Used			

CASING CEMENTED - SIZE - No. FT. - Date -
 COAL WAS ENCOUNTERED AT - FEET - INCHES
 FEET INCHES FEET INCHES
 FEET INCHES FEET INCHES

Formation	Color	Hard or Soft	Top	Bottom	Oil Gas or Water	Depth Found	Remarks
Conductor			0	15			
Red Rock			15	210			
Lime			210	250			
Mt. Sand			250	350			
Red Rock Shell			430	900			
Big Dunkard			1160	1220			
Salt Sand			1220	1740			
					Water	1740	
					Big Water	1780	
Big Lime			1805	2000			
Brake Slate			2000	2100			
Keener			2100	2115			
Injun			2115	2146			
Total Depth			2146				

