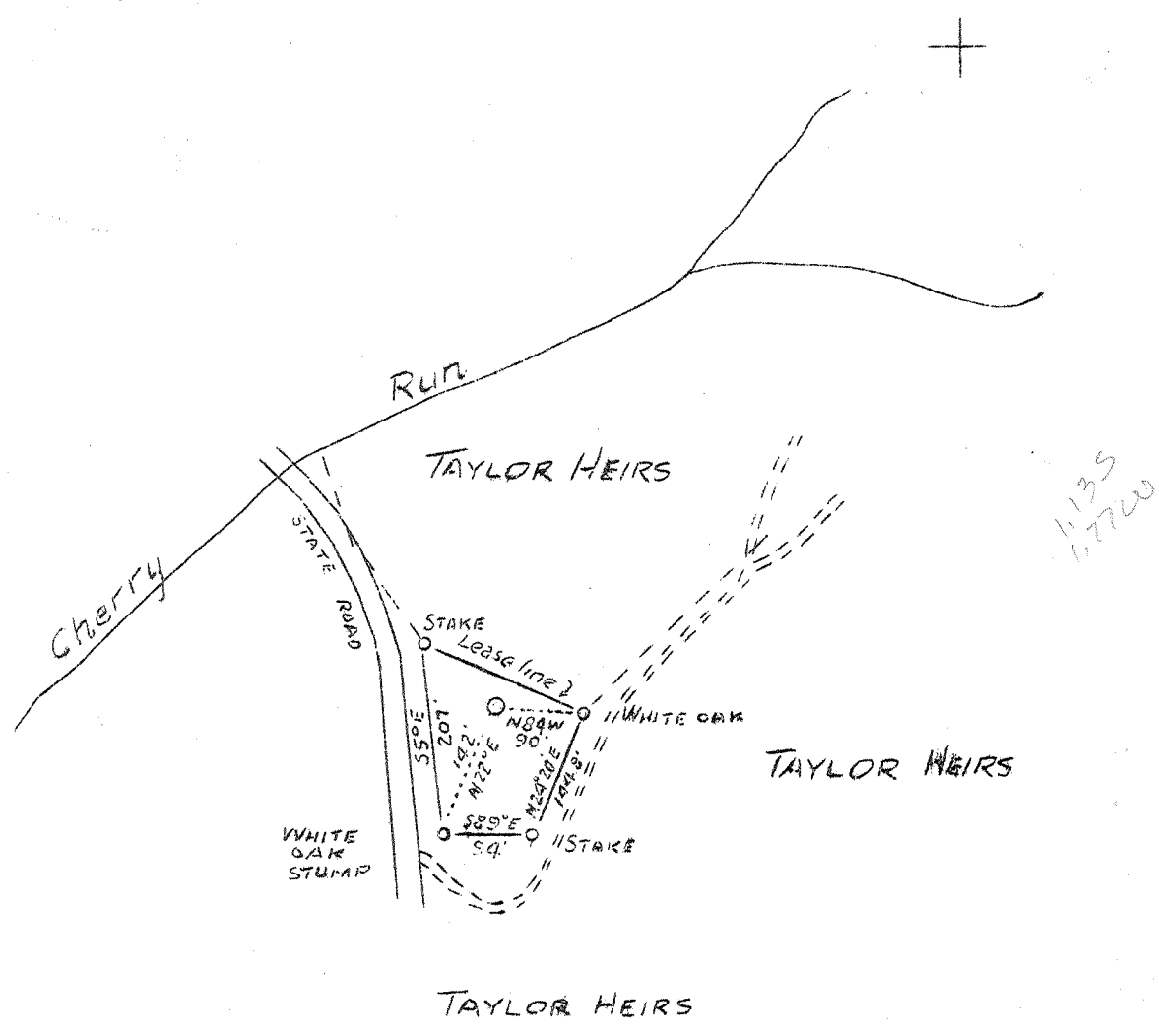


LATITUDE 38° 35'

LONGITUDE 81° 20'



TO BE ABANDONED

Company	Northeastern Oil & Gas Co.
Address	Charleston, W. Va.
Farm	Taylor Heirs
Acres	1/2
Lease No.	5
Well (Farm) No.	1
Serial No.	13
Elevation (SP)	735 - B
Quadrangle	Walton, S. E. <i>Sci</i>
County	Roane
District	Walton
Engineer	B. B. Couk (Corek)
Eng. Reg. No.	Pa. 4274
Date	July 1, 1938
Scale	1" = 200'

STATE OF WEST VIRGINIA
 Department of Mines
 OIL & GAS DIVISION
 Charleston

WELL LOCATION MAP

File No. ROA-195 A

x Denotes location of well on U.S. Topographic Maps, scale 1 to 62,500, latitude and longitude lines being represented by border lines as shown.

- Denotes one inch spaces on border line of original tracing.

W. Va. Permit 1957A

WEST VIRGINIA DEPARTMENT OF MINES
OIL AND GAS DIVISION

190

WELL RECORD

Permit No.

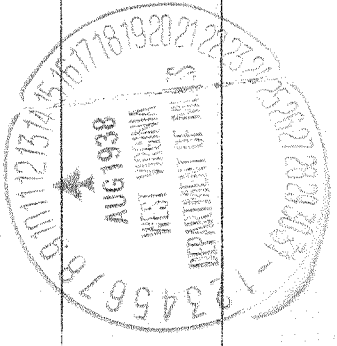
Oil or Gas Well... **GAS**
(Kind)

Company Northeastern Oil & Gas Company
 Address Charleston West Virginia
 Farm Taylor Heirs Acres 6
 Location (waters) Left Hand Fork of Sandy
 Well No. 13 Elev. 840B
 District Walton County Roane
 The surface of tract is owned in fee by Taylor Heirs
 Address Wellford, W. Va.
 Mineral rights are owned by
 Address
 Drilling commenced
 Drilling completed December 1925
 Date shot Depth of shot
 Open Flow 25 /10ths Water in 5" Inch
 /10ths Merc. in Inch
 Volume 535,680 Cu. Ft.
 Rock Pressure lbs. hrs.
 Oil bbls., 1st 24 hrs.
 Fresh water feet feet
 Salt water feet feet

Casing and Tubing	Used in Drilling	Left in Well	Packers
Size			Kind of Packer.....
16.....			
13.....			
10.....			Size of.....
8 1/4.....		1507	Depth set.....
6 5/8.....		1635	
5 3/16.....			Perf. top.....
3.....			Perf. bottom.....
2.....			Perf. top.....
Liners Used.....			Perf. bottom.....

CASING CEMENTED..... SIZE..... No. FT..... Date.....
 COAL WAS ENCOUNTERED AT..... FEET..... INCHES
 FEET..... INCHES..... FEET..... INCHES
 FEET..... INCHES..... FEET..... INCHES

Formation	Color	Hard or Soft	Top	Bottom	Oil Gas or Water	Depth Found	Remarks
Salt Sand			1015	1360			
Slate			1360	1370			
Red Rock			1370	1442			
Little Lime			1442	1472			
Lime Shell			1472	1482			
Pencil Cave			1482	1497			
Big Lime			1497	1623			
Big Injun			1623	1681			
Gas			1628	1675			



(Over)

AUG 12 1938

