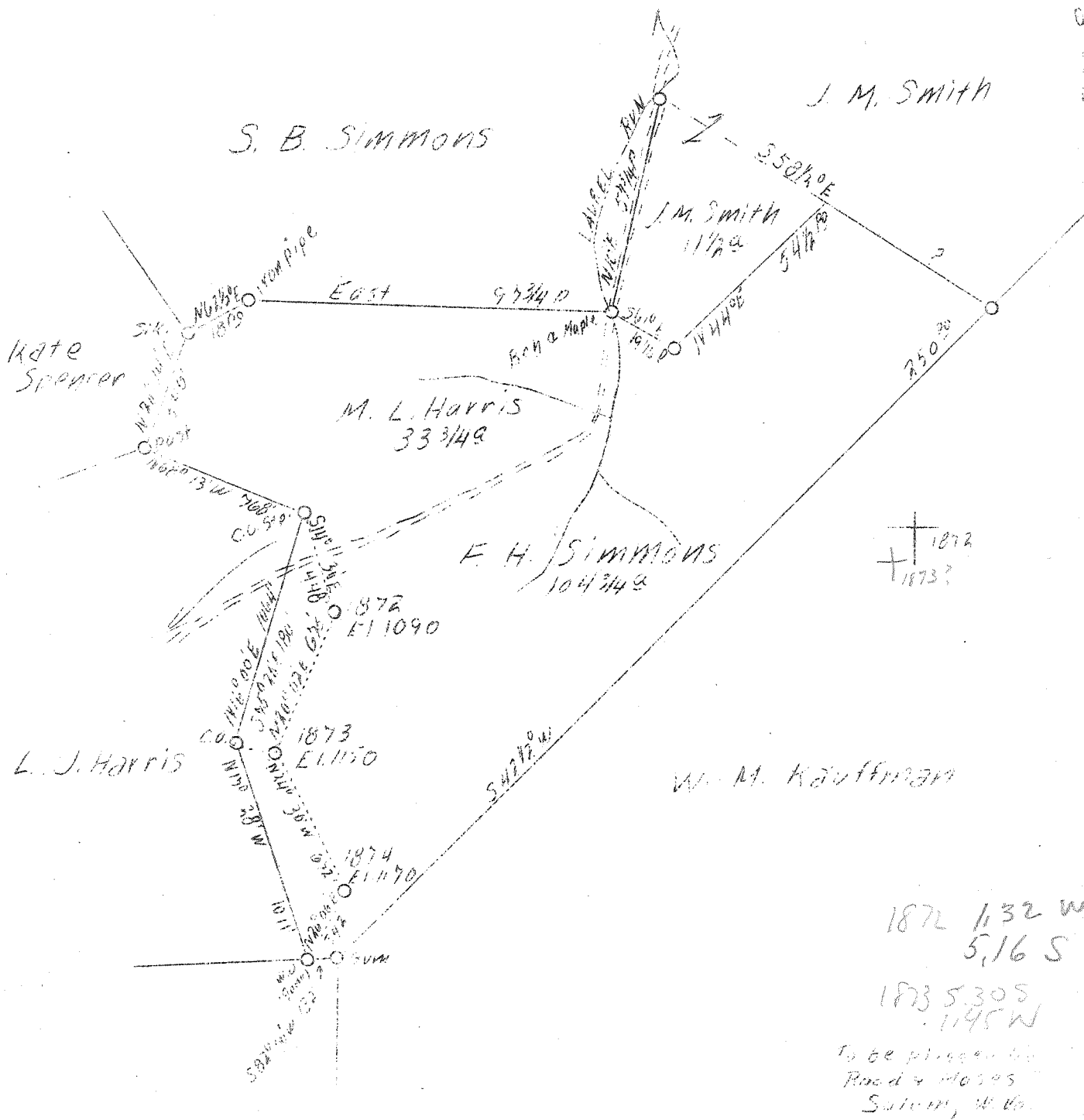


LATITUDE 38° 50'

LONGITUDE 81° 00'



173D. 1872 & 1873

F.B. 658 P 24 25

Company	Hope Constr. & Ref. Co.
Clarksburg, W. Va.	Address
Farm	F.H. Simmons
Acres	104 3/4
Lease No.	5924
Serial No.	1872, 73, & 1874
Elev. (Spirit Level)	1090, 1150, 1170
Quadrangle	Spencer
County	Roane
District	Spencer
Eng. Reg. No.	900
Eng.	W.M. Bowers
Date	Apr. 27, 1938
Scale	1" = 40 Po.

STATE OF WEST VIRGINIA  
 Department of Mines  
 OIL AND GAS DIVISION  
 Charleston

WELL LOCATION MAP

File No. Geo-204 & 205 A

x Denotes location of well on U.S. Topographic Maps, scale 1 to 62,500, latitude and longitude lines being represented by border lines as shown.

- Denotes one inch spaces on border line of original tracing.

87-204 A

See microfilm for well record

F H Simmons 1 (1872)

TD = 2269

Elevation = 1090'

87-205 A

See microfilm for Well Record

F H Simmons 2 (1873)

Elevation = 1150'

TD = 2323'