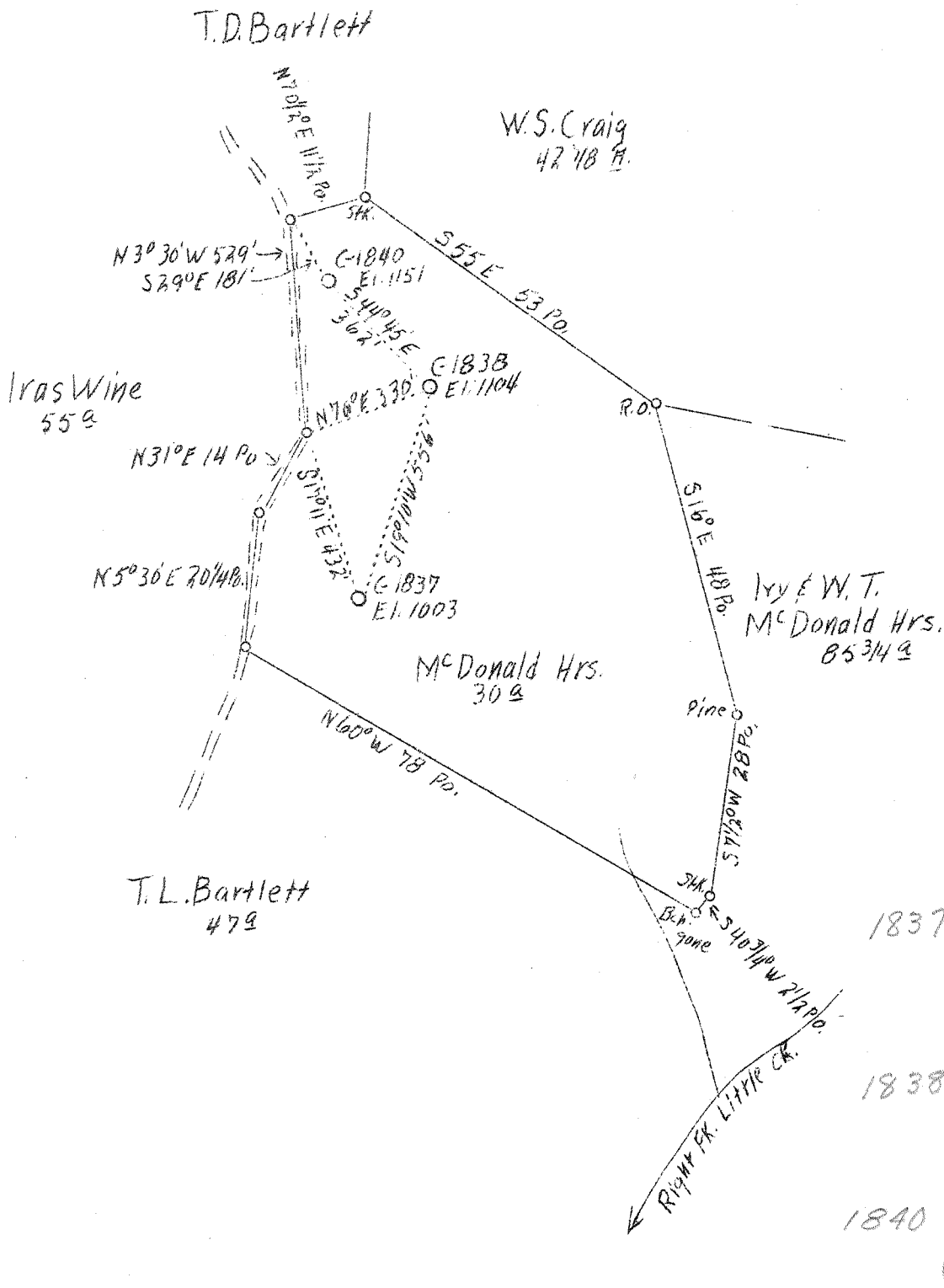


1840
1838
1837

LATITUDE 38° 50'

LONGITUDE 81° 15'



A.B.D. C-1837-1838-1840

FB. 66B P 73-74 547-W40 54 4/151

Company	Hope Const. & Refining Co.
Address	Clarksburg, W. Va.
Farm	McDonald Hrs.
Acres	30
Lease No.	5936
Well (Farm) No.	1, 2 and 4
Serial No.	C-1837, C-1838 and C-1840
Elevation	See Above
Quadrangle	Spencer
County	Roane
District	Spencer
Engineer	W. M. Bowers
Eng. Reg. No.	900
Date	Dec. 5, 1938
Scale	1" = 400'

STATE OF WEST VIRGINIA
Department of Mines
OIL & GAS DIVISION
Charleston

WELL LOCATION MAP

File No. R02-225-226-227-A

x Denotes location of well on U. S. Topographic Maps, scale 1 to 62,500, latitude and longitude lines being represented by border lines as shown.

- Denotes one inch spaces on border line of original tracing.

WEST VIRGINIA DEPARTMENT OF MINES
OIL AND GAS DIVISION

257

WELL RECORD

Permit No. 226-A

Oil or Gas Well Oil
(Kind)

Company Hope Construction & Refining Company
 Address Clarksburg, W. Va.
 Farm McDonald Heirs Acres 30
 Location (waters).....
 Well No. 1838 Elev. 1104
 District Spencer County Roane
 The surface of tract is owned in fee by Chas. H. McDonald
 Address Triplett, W. Va.
 Mineral rights are owned by.....
 Address.....
 Drilling commenced 1-11-1917
 Drilling completed 3-10-1917
 Date shot 3-2-1917 Depth of shot Injun
 Open Flow /10ths Water in..... Inch
 /10ths Merc. in..... Inch
 Volume..... Cu. Ft.
 Rock Pressure..... lbs..... hrs.
 Oil..... bbls., 1st 24 hrs.
 Fresh water None recorded feet..... feet
 Salt water 1932 feet..... feet

Casing and Tubing	Used in Drilling	Left in Well	Packers
Size			
16			Kind of Packer.....
13			
10	517	483	Size of.....
8 1/4	1412	Pulled	
6 5/8	2131	2131	Depth set.....
5 3/16			
3			Perf. top.....
2	2266	2266	Perf. bottom.....
Liners Used.....			Perf. top.....
			Perf. bottom.....

CASING CEMENTED..... SIZE..... No. FT..... Date
Not cemented
 COAL WAS ENCOUNTERED AT..... FEET..... INCHES
No coal FEET..... INCHES..... FEET..... INCHES
 FEET..... INCHES..... FEET..... INCHES

Formation	Color	Hard or Soft	Top	Bottom	Oil Gas or Water	Depth Found	Remarks
Red Rock Cave			1005	1248			
Cow Run Sand			1248	1525			
First Salt Sand			1460	1555			
Third Salt Sand			1862	2088	Water	1932	Salt
Little Lime			2088	2118			
Pencil Cave			2118	2120			
Big Lime			2120	2231			
Keener Sand			2231	2248			
Big Injun Sand			2248	2276	Oil	2260	
Total Depth				2276			

