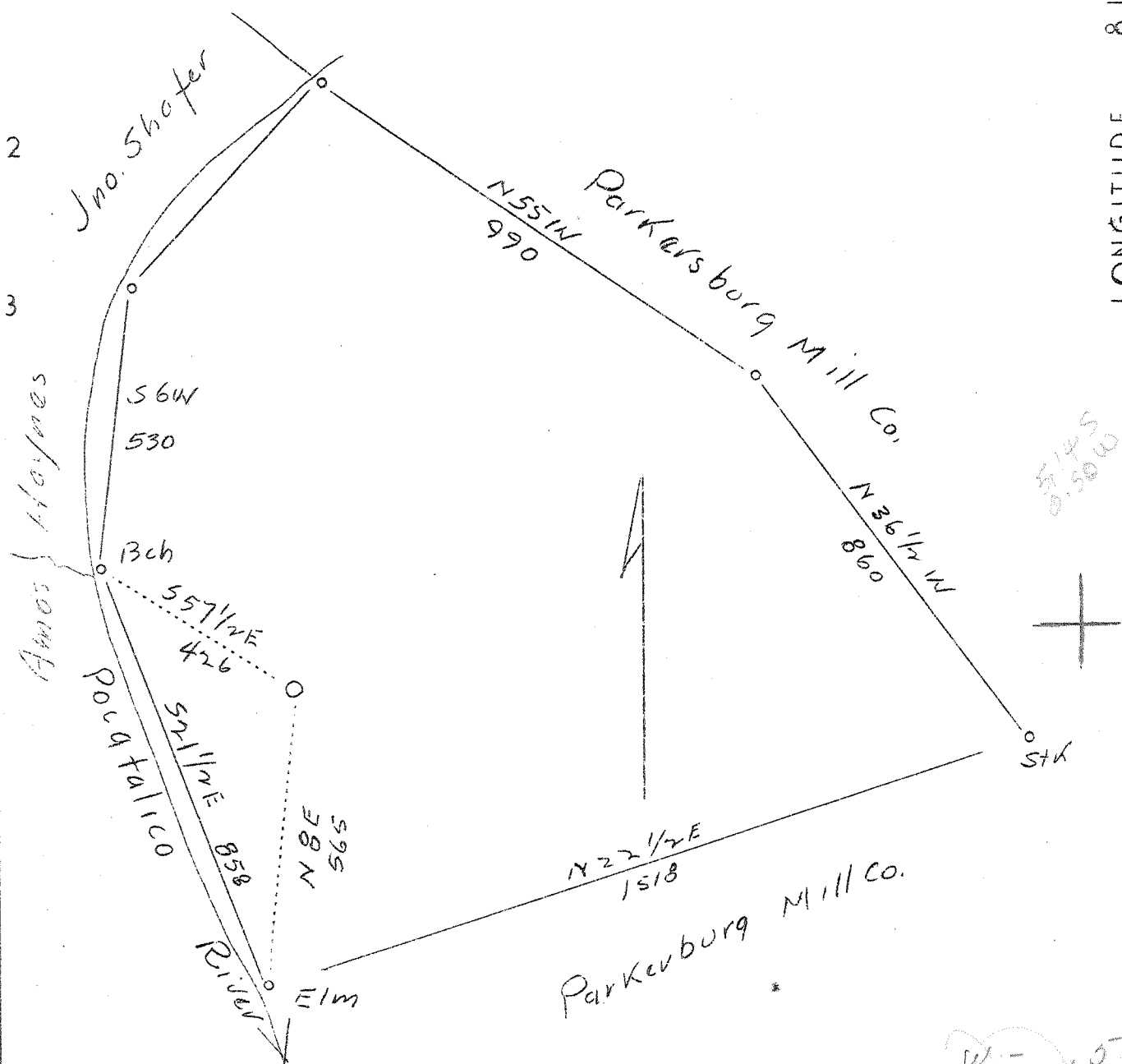


LATITUDE 38° 40'

LONGITUDE 81° 30'



Abd.

Sheet #3

Company	Chartiers Oil Co.
Address	Pittsburgh, Pa.
Farm	H. F. Shafer Mrs.
Acres	52
Plot (Farm) No.	1
Elevation (SL)	761.77
Quadrangle	Kenna <i>E.C.</i>
County	Roane
District	Harper
Engineer	Basil S. Burgess
File Reg. No.	469
Date	Sept. 12, 1939
Scale	1" = 300'

STATE OF WEST VIRGINIA
 Department of Mines
 OIL & GAS DIVISION
 Charleston

WELL LOCATION MAP

File No. ROA-252A

x Denotes location of well on U. S. Topographic Maps, scale 1 to 62,500, latitude and longitude lines being represented by border lines as shown.

- Denotes one inch spaces on border line of original tracing.

STATE OF WEST VIRGINIA
DEPARTMENT OF MINES
OIL AND GAS DIVISION

216

WELL RECORD

Permit No. 252-A

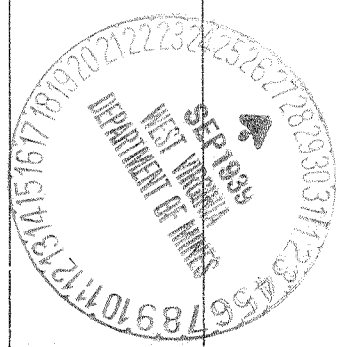
Oil or Gas Well Gas
(Kind)

Company The Chartiers Oil Company
Address 248 Fourth Ave., Pittsburgh, Penna.
Farm Elihu Shafer Acres 52
Location (waters) Poca River
Well No. 1 Elev. 761.77
District Harper County Rosane
The surface of tract is owned in fee by Elihu Shafer etal
Address Clendenin, W.Va.
Mineral rights are owned by Elihu Shafer etal
Address Clendenin, W.Va.
Drilling commenced June 23, 1928
Drilling completed July 20, 1928
Date shot..... Depth of shot.....
Open Flow 28/10ths Water in 4" Inch
..... /10ths Merc. in..... Inch
Volume 500,000 c.f. when packer was set Cu. Ft.
Rock Pressure..... lbs..... hrs.
Oil..... bbls., 1st 24 hrs.
Fresh water..... feet..... feet
Salt water..... feet..... feet

Casing and Tubing	Used in Drilling	Left in Well	Packers
Size			
16			Kind of Packer.....
13			Bottom Hole
10	210	210	Size of <u>6-5/8" x 2"</u>
8 1/4	690	Pulled	
6 5/8	1603	1603	Depth set <u>1683</u>
5 3/16			
3			Perf. top.....
2	1701	1701	Perf. bottom.....
Liners Used			Perf. top.....
			Perf. bottom.....

CASING CEMENTED..... SIZE..... No. FT..... Date.....
COAL WAS ENCOUNTERED AT..... FEET..... INCHES
..... FEET..... INCHES..... FEET..... INCHES
..... FEET..... INCHES..... FEET..... INCHES

Formation	Color	Hard or Soft	Top	Bottom	Oil Gas or Water	Depth Found	Remarks
Shale			0	535	Water	128	10 Bailers hour
Little Dunkard			535	590			
Big Dunkard			593	716	Water	710	1 1/2 " "
Gas Sand			815	850			
Little Salt Sand			1103	1132			
Salt Sand			1205	1511	Hole full of water at	1290	
Maxon Sand			1511	1585			
Little Lime			1585	1614			
Pencil Cave			1589	1597	Hole full of water at	1683	
Big Lime			1597	1701	Gas	1697 S.L.M.	



Formation	Color	Hard or Soft	Top	Bottom	Oil, Gas or Water	Depth Found	Remarks

Date SEP 26 1939, 19

APPROVED THE CHARTERS OIL COMPANY, Owner

By J.M. Brown, Asst Treas.
(Title)