

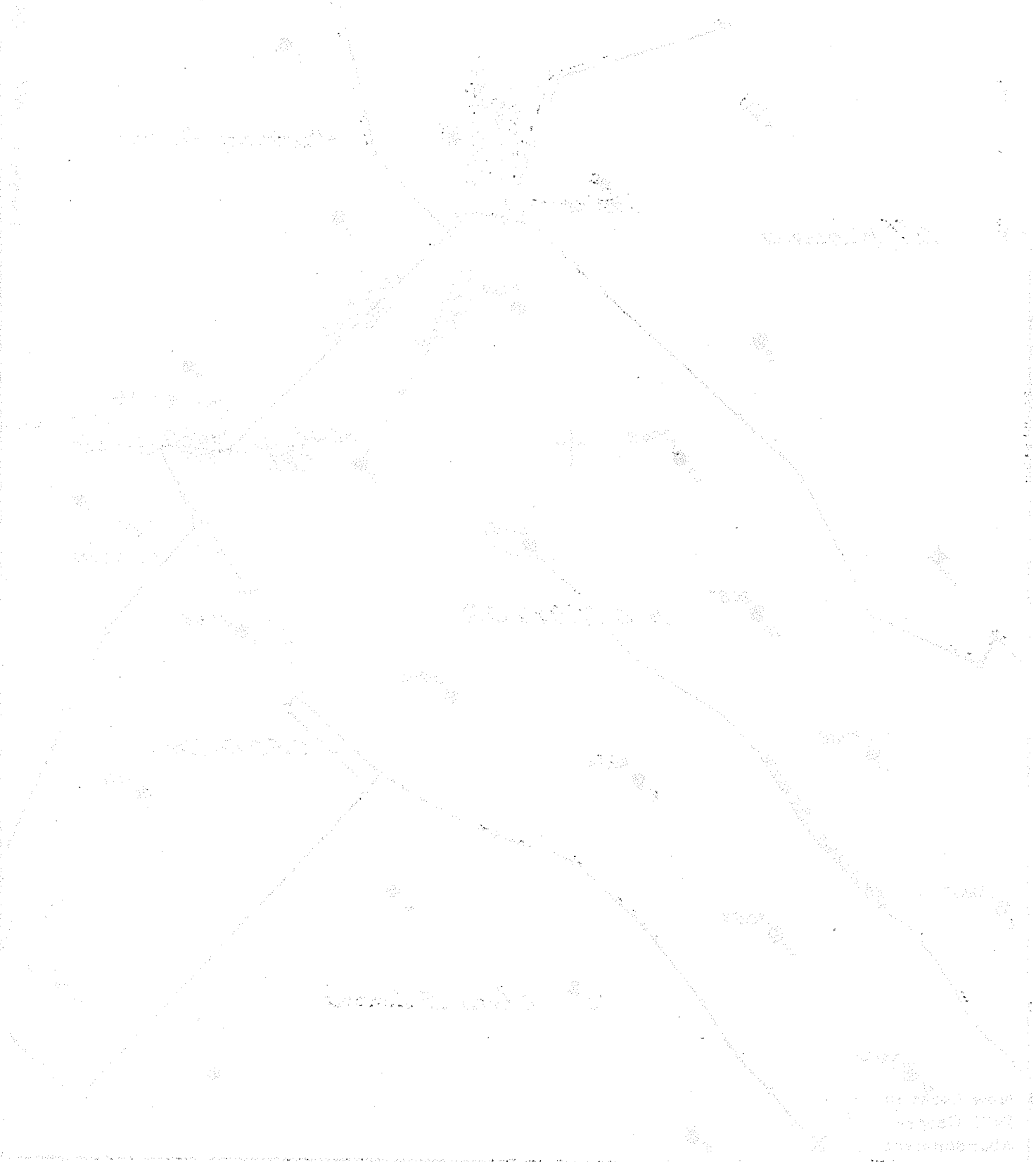
Company SUPERIOR PIPE & SUPPLY CO
 Address GRAND RAPIDS, MICH.
 Farm H.C. TAYLOR
 Tract _____ Acres 200 Lease No. 1793
 Well (Farm) No. 2 Serial No. 3044
 Elevation (Spirit Level) 1060 Bar.
 Quadrangle WALTON DE
 County ROANE District SMITHFIELD
 Engineer J.A. Cunningham
 Engineer's Registration No. 659
 File No. 78-81 Drawing No. _____
 Date Nov. 29, 1944 Scale 1" = 400'

STATE OF WEST VIRGINIA
 DEPARTMENT OF MINES
 OIL AND GAS DIVISION
 CHARLESTON

WELL LOCATION MAP
 FILE NO. BOA-417-A

- + Denotes location of well on United States Topographic Maps, scale 1 to 62,500, latitude and longitude lines being represented by border lines as shown.
- Denotes one inch spaces on border line of original tracing.

016 DIV AN Rpt 1941, Table 6
comp 1913 oil well - TO 2159'



Geological description of the well path and surrounding area. The well path is shown as a line with several curves, indicating its trajectory. The geological layers are represented by different patterns and textures. From top to bottom, the layers include: a top layer with a dotted pattern; a layer with a horizontal line pattern; a layer with a vertical line pattern; a layer with a diagonal line pattern; a layer with a wavy pattern; and a bottom layer with a horizontal line pattern. The well path starts in the top layer, passes through the second and third layers, and then curves to the right in the fourth layer. It then curves back to the left in the fifth layer and continues straight down through the bottom layer. The diagram is labeled with various geological terms and measurements, though they are difficult to read due to the image quality.

Geological description of the well path and surrounding area. The well path is shown as a line with several curves, indicating its trajectory. The geological layers are represented by different patterns and textures. From top to bottom, the layers include: a top layer with a dotted pattern; a layer with a horizontal line pattern; a layer with a vertical line pattern; a layer with a diagonal line pattern; a layer with a wavy pattern; and a bottom layer with a horizontal line pattern. The well path starts in the top layer, passes through the second and third layers, and then curves to the right in the fourth layer. It then curves back to the left in the fifth layer and continues straight down through the bottom layer. The diagram is labeled with various geological terms and measurements, though they are difficult to read due to the image quality.

87-30417

No. 2 Ohio Fuel Oil Co. COMPLETION

Sheet 6665

SERIAL NO. _____ FARM H.C. Taylor WELL NO. 2

ELEVATION _____ N. _____ S. 52 E. _____ W. 41

CONTRACTOR _____ ACRES _____

WATERS OF _____

DISTRICT Smithfield COUNTY Roane STATE W. Va.

DRILLING COMMENCED _____ COMPLETED 5/31/13 DEPTH 2025

10/13/1913 *2157*

SANDS	TOP	BOTTOM	ELEV. TOP	CASING
PGH. COAL OR BIG LIME				
<u>Little D</u>	<u>860</u>	<u>880</u>	<u>20</u>	
<u>Big Dunk</u>	<u>960</u>	<u>1220</u>	<u>260</u>	

PACKERS AND DEPTH SET

INITIAL PROD. Est. 2 Bbl. SAND Injun DEPTH No Rec.

GAS TEST _____ " _____ " _____

SHOT _____ QUARTS _____ " _____ " _____

REMARKS _____

REPORTED BY poca district ABANDONED _____

No. 2 Ohio Fuel Oil Co. COMPLETION

SERIAL NO. 3044 FARM H.C. Taylor D.D. WELL NO. 2

ELEVATION 1060 N. _____ S. 52 E. _____ W. 41

CONTRACTOR _____ ACRES _____

WATERS OF _____

DISTRICT Smithfield COUNTY Roane STATE W. Va.

DRILLING COMMENCED 8/20/1913 COMPLETED 10/13/13 DEPTH 2157

SANDS	TOP	BOTTOM	ELEV. TOP	CASING
PGH. COAL OR BIG LIME				
<u>Soft Sand</u>	<u>1670</u>	<u>1950</u>	<u>280</u>	
<u>Little Lime</u>	<u>1950</u>	<u>1985</u>	<u>35</u>	
<u>Pencil Cave</u>	<u>1985</u>	<u>1993</u>	<u>8</u>	
<u>Big Lime</u>	<u>1993</u>	<u>2090</u>	<u>97</u>	
<u>Keener</u>	<u>2090</u>	<u>2120</u>	<u>30</u>	
<u>B I</u>	<u>2120</u>	<u>2155</u>	<u>35</u>	

PACKERS AND DEPTH SET

INITIAL PROD. Est. 12 Bbls. SAND Injun DEPTH No Rec.

GAS TEST _____ " _____ " _____

SHOT Oct 13/13 QUARTS 40 " _____ " _____

REMARKS see microfilm for well record

REPORTED BY Poca District ABANDONED _____