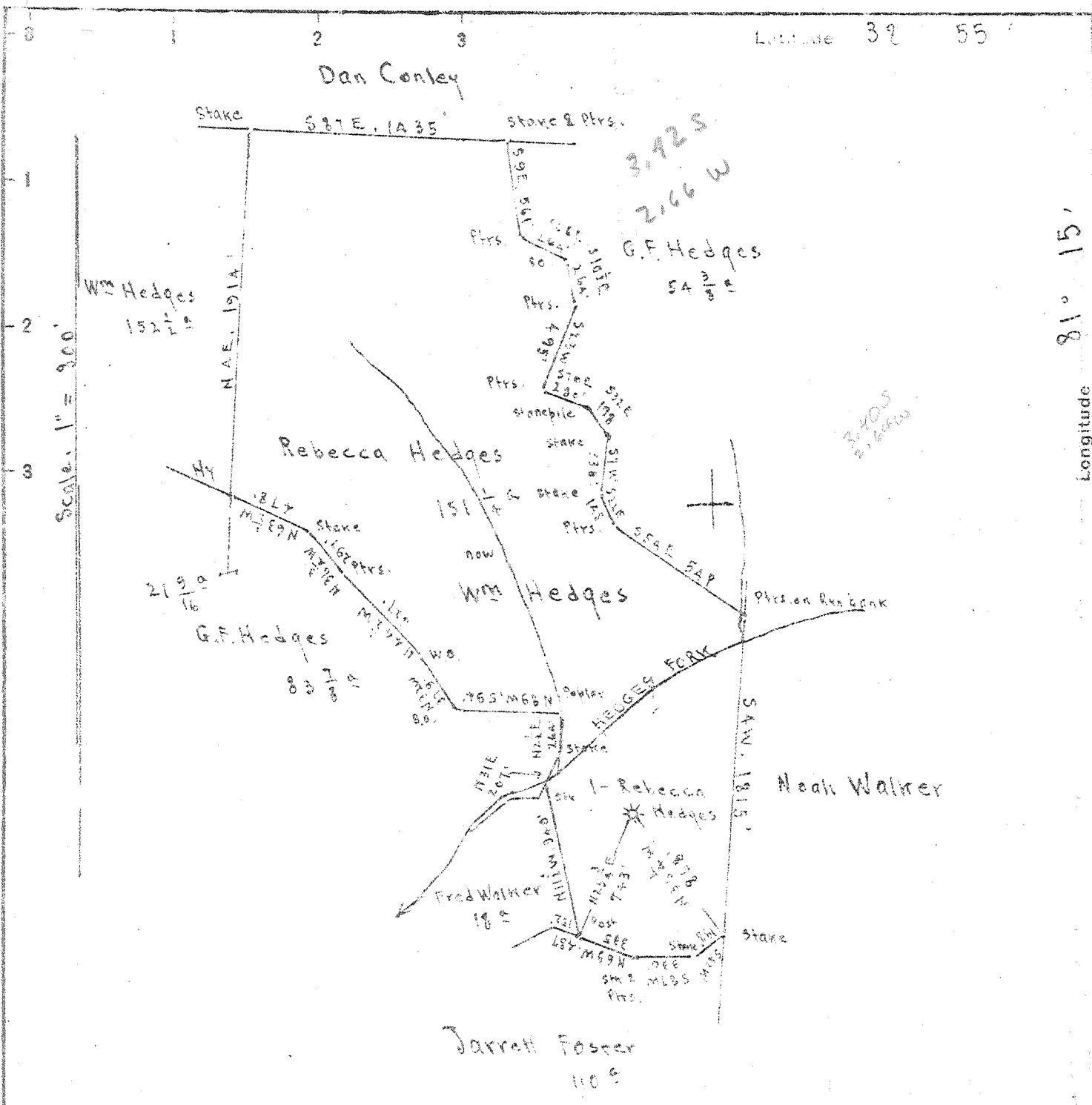


Dan Conley



No Coal.

Surface: Wm Hedges.

Spencer. (RFD # 3.) Roane Co., W. Va.

New Location.....  
 Drill Deeper.....  
 Abandonment.....X

Company Roan Supply Co.  
 Address Salem W. Va.  
 Farm Rebecca Hedges  
 Tract Acres 151 1/4 Lease No. \_\_\_\_\_  
 Well (Farm) No. 1 Serial No. \_\_\_\_\_  
 Elevation (Spirit Level) Floor - 832.00  
Ground - 830.00  
 Quadrangle Spencer  
 County Roane District Spencer  
 Engineer E.C. Tabler  
 Engineer's Registration No. \_\_\_\_\_  
 File No. \_\_\_\_\_ Drawing No. \_\_\_\_\_  
 Date July 16<sup>th</sup>, 1946 Scale 1" = 300'

STATE OF WEST VIRGINIA  
 DEPARTMENT OF MINES  
 OIL AND GAS DIVISION  
 CHARLESTON

WELL LOCATION MAP  
 FILE NO. ROA-440-A

\* Denotes location of well on United States Topographic Maps, scale 1 to 62,500, latitude and longitude lines being represented by border lines as shown.

- Denotes one inch spaces on border line of original tracing.

REBECCA HEDGES NO. 1 WELL.

Spencer District, Roane County, W. Va.  
By South Penn Oil Co.  
On 313 $\frac{1}{2}$  acres.  
Keller Map I-22.  
Elevation.....  
Completed Oct. 25, 1918.  
Gas well. 45/10 W. in 6 $\frac{5}{8}$ ".  
S. P. - 315 acres; S-39 - W-42.  
From Heck's notes.

	Top.	Bottom.
Salt Sand	1630	- 1775
Big Lime	1825	- 1940
Big Injun Sand	1940	- 1973
Berea Sand	2367	- 2390
Total depth		2390



STATE OF WEST VIRGINIA  
DEPARTMENT OF MINES  
OIL AND GAS DIVISION

363

WELL RECORD

Permit No. 440-A Oil or Gas Well X  
(KIND)

Company Reed Supply Company  
Address 184 East Main St., Salem, W. Va.  
Farm Rebecca Hedges Acres 151 1/2  
Location (waters).....  
Well No. 1 Elev. 530.00  
District Spencer County Roane  
The surface of tract is owned in fee by William Hedges  
R. F. D. #3 Address Spencer, W. Va.  
Mineral rights are owned by NO COAL  
Address.....

Casing and Tubing	Used in Drilling	Left in Well	Packers
Size			
16.....			Kind of Packer.....
13.....			
10.....			Size of.....
8 1/2.....			
6%.....	<u>1840</u>	<u>1840</u>	Depth set.....
5 3/16.....			
3.....			Perf. top.....
2.....	<u>2360</u>	<u>2360</u>	Perf. bottom.....
Liners Used.....			Perf. top.....
			Perf. bottom.....

Drilling commenced.....  
Drilling completed October 25, 1918  
Date Shot..... From..... To.....  
With.....  
Open Flow 45/10ths Water in 6 3/8 Inch  
..... /10ths Merc. in..... Inch  
Volume..... 2578 mcf Cu. Ft.  
Rock Pressure..... lbs..... hrs.  
Oil..... bbls., 1st 24 hrs.  
Fresh water..... feet..... feet  
Salt water..... feet..... feet

CASING CEMENTED..... SIZE..... No. Ft..... Date.....  
COAL WAS ENCOUNTERED AT None FEET..... INCHES  
..... FEET..... INCHES..... FEET..... INCHES  
..... FEET..... INCHES..... FEET..... INCHES

Formation	Color	Hard or Soft	Top	Bottom	Oil, Gas or Water	Depth Found	Remarks
Conductor				15			
Big Dunkard			960	1040			
Salt Sand			1630	1775			
Water			1650		Water		
Little Lime			1785	1817			
Pencil Cave			1817	1825			
Big Lime			1825	1940			
Big Injun			1940	1973			
Berea			2367	2385			
Gas			2370	2385	Gas		
Total Depth				2385			

