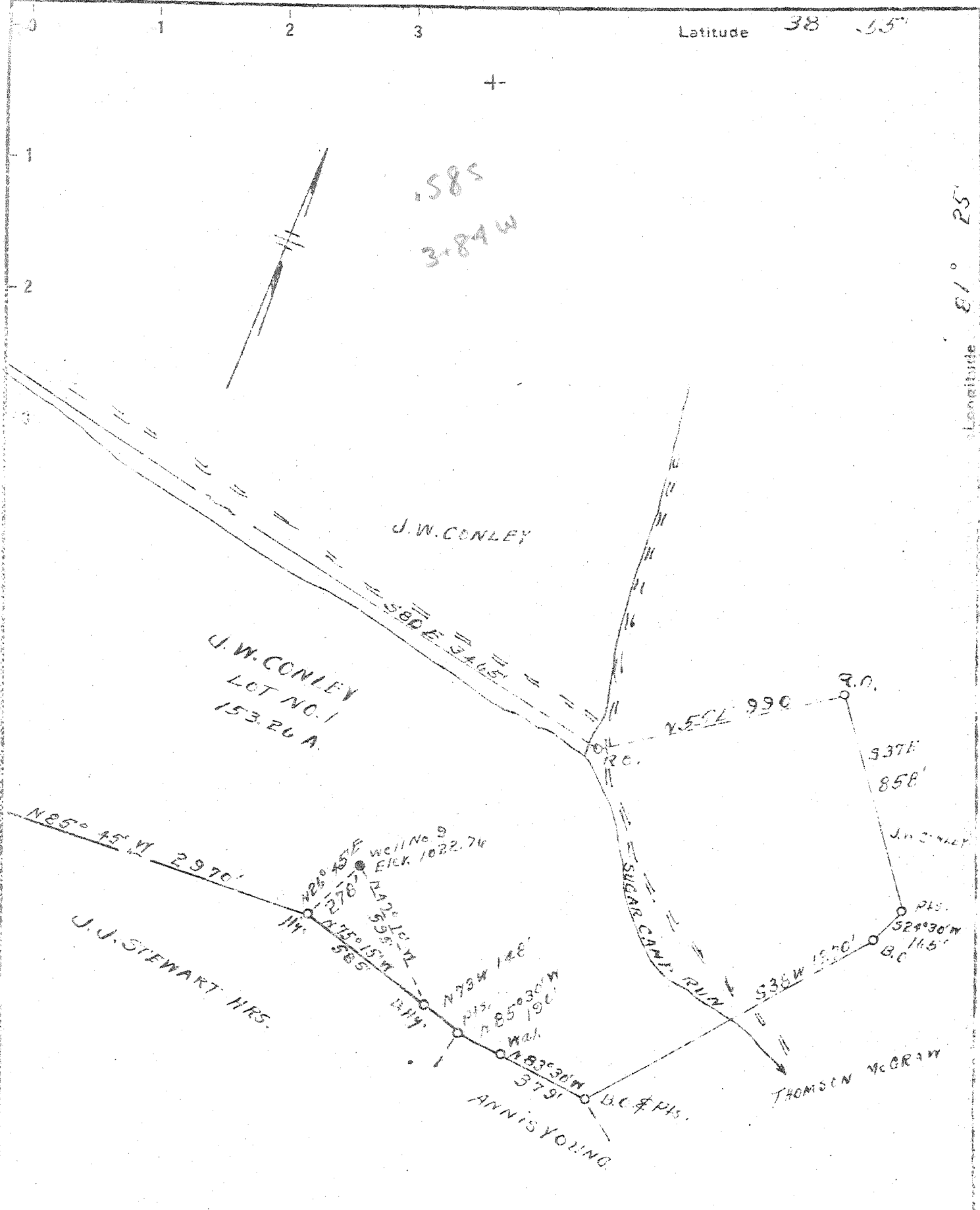


Latitude 38° 55'

Longitude 81° 25'



New Location
 Drill Deeper
 Abandonment

Company PAUL K. WEEKLEY
 Address SPENCER, W. VA.
 Farm J. W. CONLEY
 Tract NO. 1 Acres 153.26 Lease No. _____
 Well (Farm) No. 9 Serial No. _____
 Elevation (Spirit Level) 1022.76
 Quadrangle SPENCER
 County ROANE District REEDY
 Engineer L. J. Dyer
 Engineer's Registration No. 809
 File No. _____ Drawing No. _____
 Date 11-8-46 Scale 1" = 500'

STATE OF WEST VIRGINIA
 DEPARTMENT OF MINES
 OIL AND GAS DIVISION
 CHARLESTON

see microfilm for well record
WELL LOCATION MAP
 FILE NO. ROA-458-A

+ Denotes location of well on United States Topographic Maps, scale 1 to 62,500, latitude and longitude lines being represented by border lines as shown.
 - Denotes one inch spaces on border line of original tracing.



367
COPY

STATE OF WEST VIRGINIA
DEPARTMENT OF MINES
OIL AND GAS DIVISION

WELL RECORD

Permit No. ROA-458 - A

Oil or Gas Well OIL
(KIND)

Company Paul K. Weekly
Address Spencer, W. Va.
Farm J. M. Conley Acres 218
Location (waters) _____
Well No. 9 Elev. 1022.76
District Reedy County Roane
The surface of tract is owned in fee by J. M. Conley
Address Spencer, W. Va.
Mineral rights are owned by Same
Address _____
Drilling commenced June 3, 1927
Drilling completed July 7, 1927
Date Shot _____ From _____ To _____
With _____
Open Flow _____ /10ths Water in _____ Inch
_____ /10ths Merc. in _____ Inch
Volume _____ Cu. Ft.
Rock Pressure _____ lbs. _____ hrs.
Oil _____ bbls., 1st 24 hrs.
Fresh water _____ feet _____ feet
Salt water _____ feet _____ feet

| Casing and Tubing | Used in Drilling | Left in Well | Packers |
|-------------------|------------------|--------------|----------------|
| Size | | | Kind of Packer |
| 16 | | | |
| 13 | | | |
| 10 | 896 | | Size of |
| 8 1/4 | 1340 | | |
| 6 5/8 | 2239 | 2239 | Depth set |
| 5 3/16 | | | |
| 3 | | | Perf. top |
| 2 | | | Perf. bottom |
| Liners Used | | | Perf. top |
| | | | Perf. bottom |

CASING CEMENTED _____ SIZE _____ No. Ft. _____ Date _____
COAL WAS ENCOUNTERED AT _____ FEET _____ INCHES
_____ FEET _____ INCHES FEET _____ INCHES
_____ FEET _____ INCHES FEET _____ INCHES

| Formation | Color | Hard or Soft | Top | Bottom | Oil, Gas or Water | Depth Found | Remarks |
|------------------|-------|--------------|------|--------|-----------------------|-------------|---------|
| Pittsburgh | | | 725 | 811 | | | |
| 2d Pittsburgh | | | 875 | 886 | | | |
| Sand | | Hard | 902 | 915 | | | |
| Lime | | " | 1040 | 1048 | | | |
| Little Dunkard | | | 1194 | 1220 | Water | 1315 | |
| Big Dunkard | | | 1275 | 1416 | | | |
| Maxburg sand | | | 1471 | 1491 | Water | 1320 | |
| Sand | | " | 1510 | 1552 | Water | 1974 | |
| Sand | | " | 1602 | 1629 | | | |
| Slate | | | 1629 | 1650 | | | |
| Sand | | | 1650 | 1690 | | | |
| Slate | | | 1690 | 1720 | | | |
| Sand | | | 1720 | 1821 | | | |
| Slate | | | 1821 | 1890 | | | |
| Lime | | | 1890 | 1920 | | | |
| Salt sand | | | 1940 | 2225 | | | |
| Slate | | | 2225 | 2228 | | | |
| Shells | | " | 2228 | 2230 | | | |
| Slate | | | 2230 | 2233 | | | |
| Shells | | | 2233 | 2235 | | | |
| Slate | | | 2235 | 2240 | | | |
| Shells | | | 2240 | 2259 | | | |
| Slate and shells | | | 2259 | 2582 | | | |
| Brown shale | | | 2582 | 2594 | | | |
| Berea Grit | | | 2594 | 2611 | Oil pay in Berea Grit | | |
| Total Depth | | | | 2619 | | | |

This well was drilled by the Heck Oil Company, sold to the South Penn Oil Company and I purchased it from the South Penn Oil Company for abandonment.

MAR 20 1947

