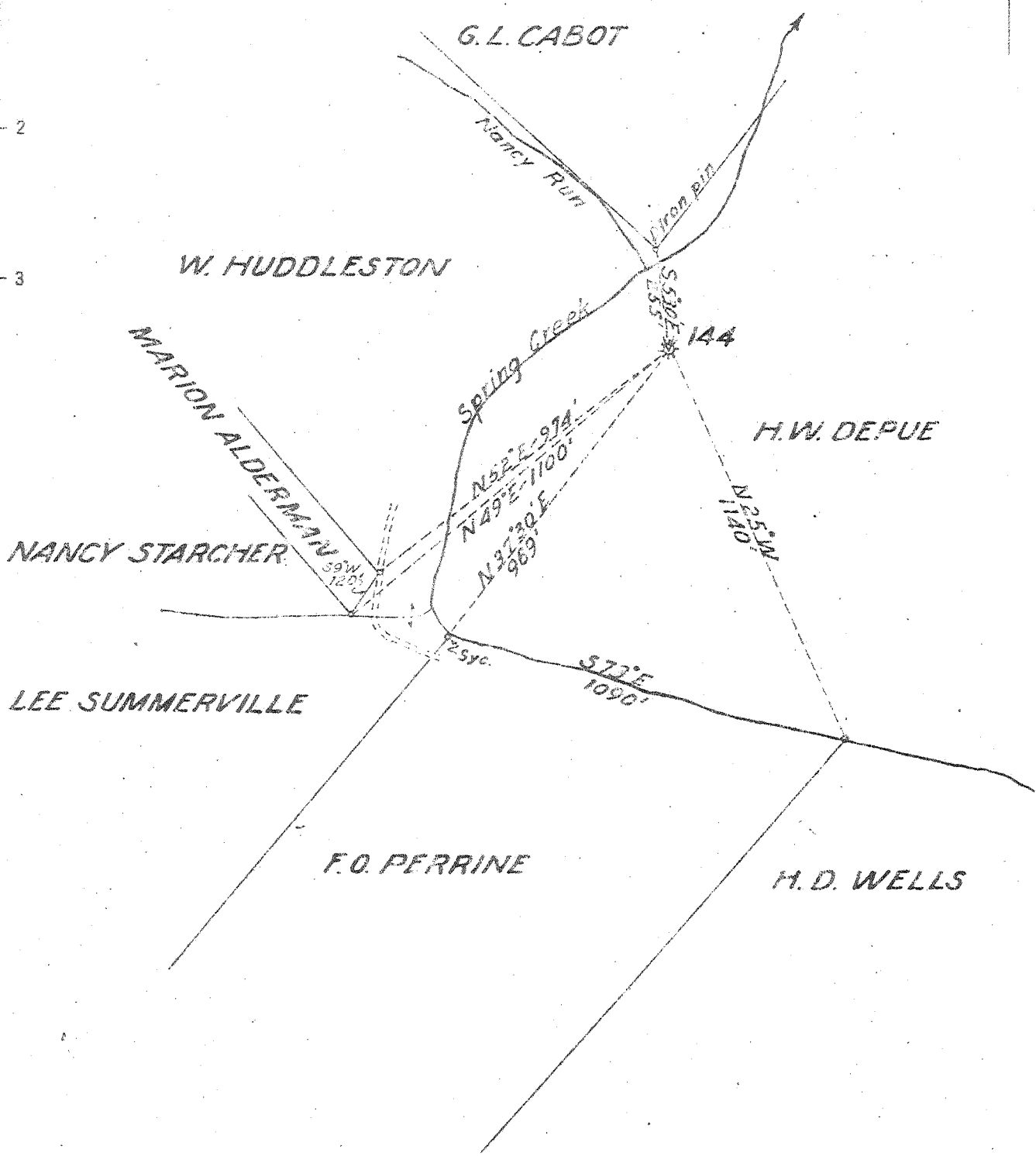


1.28 S
0.78 W

Longitude 81 20



New Location
 Drill Deeper
 Abandonment

Company UNITED FUEL GAS CO.
 Address CHARLESTON, W. VA.
 Farm H. W. DEPUE
 Tract _____ Acres 88 Lease No. 3293
 Well (Farm) No. _____ Serial No. 144
 Elevation (Spirit Level) 714'
 Quadrangle SPENCER SO
 County ROANE District SPENCER IND. SCHOOL
 Engineer [Signature]
 Engineer's Registration No. 662
 File No. 76-91 Drawing No. _____
 Date DEC. 3, 1946 Scale 1" = 400'

STATE OF WEST VIRGINIA
 DEPARTMENT OF MINES
 OIL AND GAS DIVISION
 CHARLESTON

WELL LOCATION MAP
 FILE NO. ROA-461-A

+ Denotes location of well on United States Topographic Maps, scale 1 to 62,500, latitude and longitude lines being represented by border lines as shown.
 - Denotes one inch spaces on border line of original tracing.

DEPUE NO. 1 WELL.

Spencer District, Roane County, W. Va.
By Fisher Oil Co.
On Spring Creek, 3/4 mi. N. of Spencer.
Elevation, 718' L.
Comm 9/7/1908
Comp 10/30/1908

See Microfilm for Well record
Top. Bottom.

Sand, Cow Run? (Big Dunkard)	905 - 995
Salt Sand	1505 - 1775
Big Lime	1780 - 1865
Keener Sand	2865 - 1900
Berea Sand	2273 - 2290

TD = 2290