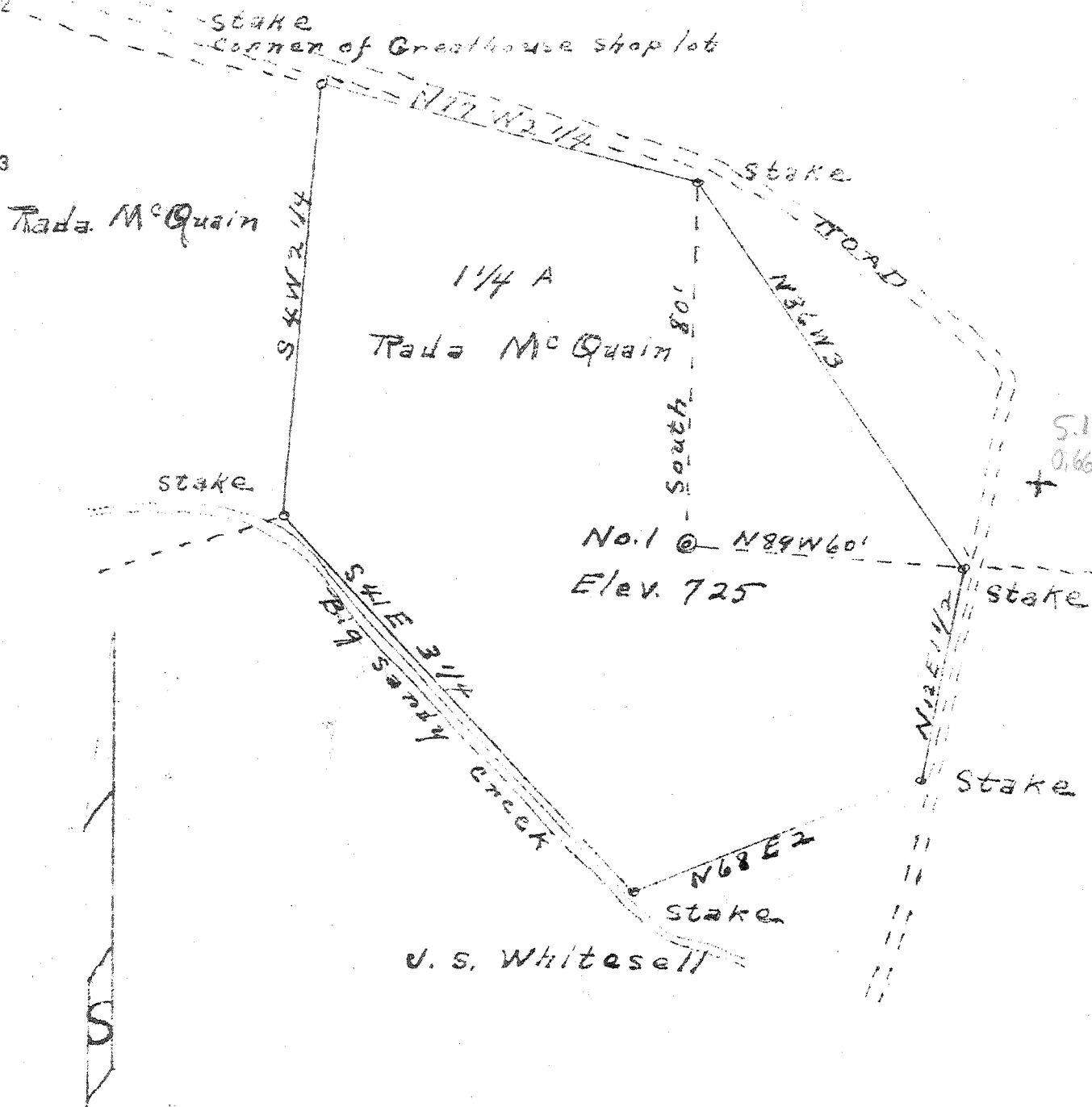


N.T.R. Ellis

Longitude 81 10



New Location
 Drill Deeper
 Abandonment

Company Southeastern Gas Co
 Address Charleston, W. Va.
 Farm Tada McQuain
 Tract 1/4 Acres 1/4 Lease No. 2128
 Well (Farm) No. 1 Serial No. 540
 Elevation (Spirit Level) 725'
 Quadrangle Otbert
 County Boone District Beary
 Engineer Harry Deiter
 Engineer's Registration No. _____
 File No. _____ Drawing No. _____
 Date _____ Scale 1" = 2 poles

STATE OF WEST VIRGINIA
 DEPARTMENT OF MINES
 OIL AND GAS DIVISION
 CHARLESTON

See microfilm for well record
WELL LOCATION MAP
 FILE NO. ROA-474-A

+ Denotes location of well on United States Topographic Maps, scale 1 to 62,500. latitude and longitude lines being represented by border lines as shown.

- Denotes one inch spaces on border line of original tracing.