

LATITUDE 38° 37' 30"

7.5' loc  
D.M.  
1/3/92

LONGITUDE 81° 22' 30"

7.5 OGIS topo location

7.5' loc \_\_\_\_\_ 15' loc \_\_\_\_\_  
\_\_\_\_\_ (calc.) \_\_\_\_\_

Company HEEDOR & Nichols

Farm MARY S. GIBSON 9  
ELEV: 955 G

Quad KETTLE

County ROANE

District WALTON

~~see 87-569 for plan~~  
~~well records~~

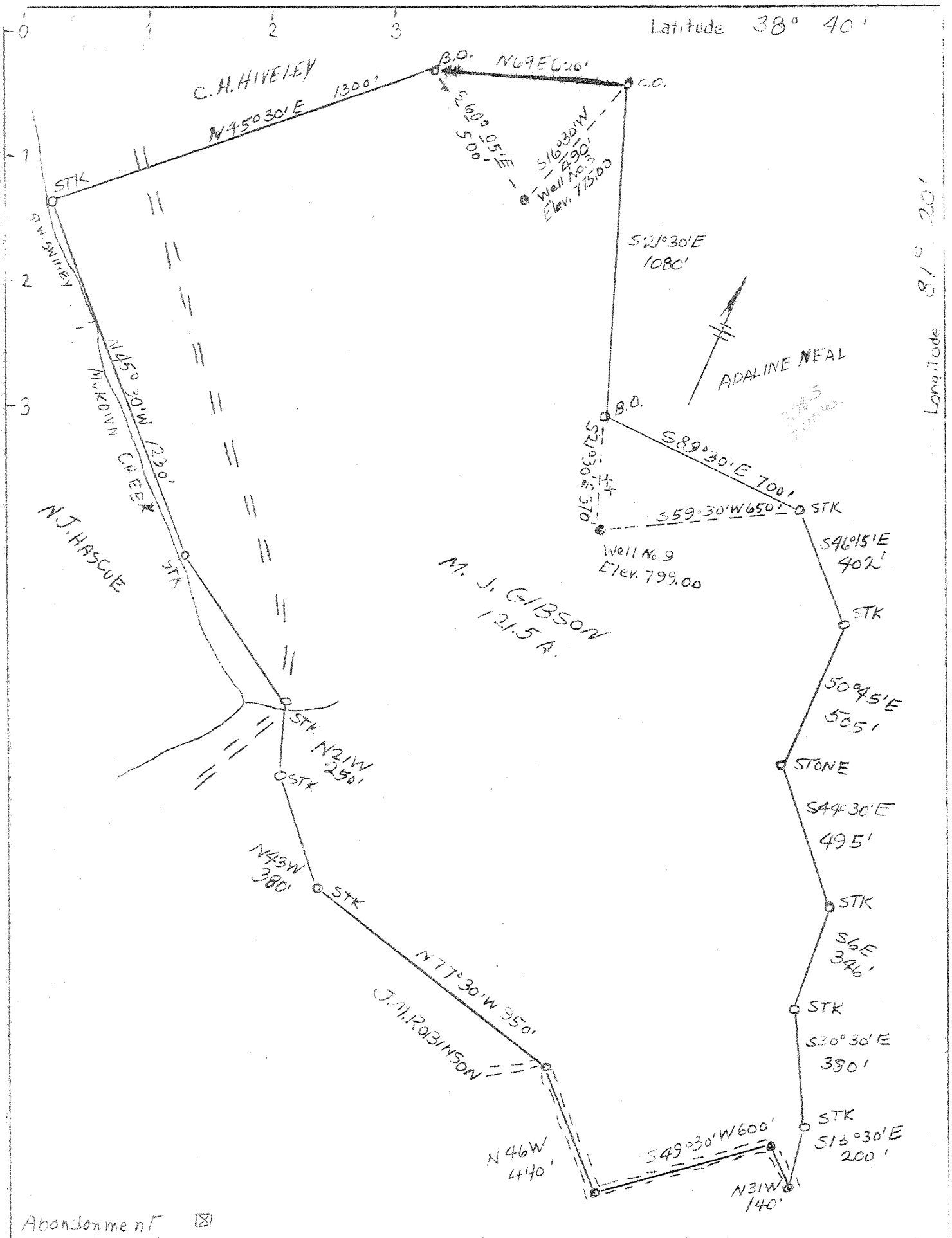
WELL LOCATION MAP

File No. 87-30513

TD 2045

372 371

Drawing Dates 9/18/1916



Abandonment

COMPANY W. L. Heeter  
 ADDRESS Spencer, W. Va.  
 FARM M. J. Gibson  
 TRACT ACRES 121.5 SERIAL NO. \_\_\_\_\_  
 WELL (FARM) NO. S 3-9 SERIAL NO. \_\_\_\_\_  
 ELEVATION (SPIRIT LEVEL) #3-775.00  
 #9-799.00  
 QUADRANGLE Walton  
 COUNTY Rosne DISTRICT Walton  
 ENGINEER L. F. Dye  
 ENGINEER'S REGISTRATION NO. 804  
 FILE NO. \_\_\_\_\_ DRAWING NO. \_\_\_\_\_  
 DATE 5-7-48 SCALE 1" - 400'

STATE OF WEST VIRGINIA  
 DEPARTMENT OF MINES  
 OIL AND GAS DIVISION  
 Charleston.

WELL LOCATION MAP  
 FILE NO. RCA - 509-A-#3  
RCA - 513-A-#9

+ Denotes location of well on U. S. Topographic Maps, scale 1 to 62,500, latitude and longitude lines being represented by border lines as shown.

— Denotes one inch spaces on border line of original tracing.

Well No. 9 Mary J. Gibson 87 fam. 913 Acres  
 Lease No. Walton District Boone County W. Va. State  
 Contractor A. P. O. Co. Contractor A. P. O. Co. Contractor  
 Drilling Commenced Aug 12 1916 Drilling Completed Sept 18 1916  
 N. S. 57 E. W. 44

ROCK FORMATION	TOP	BOTTOM	STEEL LINE MEASUREMENT	REMARKS
Conductor		16	EI = 954.62	
Sand	90	180		
Plate shell	180	260		
Sand	260	320		
Big Dunkard	720	815		
Sand	890	930		
Slate & shells	970	1495		
Salt sand	1495	1790		
Water hole full	1510			
Break	1695	1702		
les	1765	1790		
maxon sand	1790	1839		
Little Linn	1839	1849		
Shell	1849	1854		
Shell & slate	1854	1859		
Big Linn	1859	1997	1892	
Big Linn sand	1997	2040	1997	
Some Gas	2001			
show ore	2017			
Slate	2040	2040		
Total depth		2045	2045	

CASING RECORD AS TALLIED. NOT STEEL LINE MEASUREMENT

SIZE	PUT IN WELL		PULLED OUT		LEFT IN WELL		Shot Date 9-21-16 Amount 20 lbs Sand 13. 2 1/2 Result
	FEET	IN.	FEET	IN.	FEET	IN.	
10	204		204				Packer Size  Depth Set
8 1/4	766	2	766	2			
6 5/8	1902						

Production First 24 Hours 6 Bbls. Gas Test

Approved by W. O. Graham Superintendent

87-30513

Roe 513 A

No. 1

## SOUTH PENN OIL COMPANY—COMPLETION

SERIAL NO. \_\_\_\_\_ FARM MARY J. GIBSON WELL NO. 9  
 ELEVATION 954.62 N. \_\_\_\_\_ S. 57 E. \_\_\_\_\_ W. 44  
 LEASE NO. 56983 ACRES 127  
 WATERS OF McCown Creek  
 DISTRICT Walton COUNTY Reese STATE W. Va.  
 DRILLING COMMENCED 8/12/16 COMPLETED 9/18/16 DEPTH 2045

	SANDS	TOP	BOTTOM	ELEV. TOP	CASING
<del># of Coals</del> BIG LIME		1859	1997		10 204
Imjun		1997	2040		8 $\frac{1}{2}$ Pulled
Little Gas		2001			65/8 1902
Oil		2017			
					PACKERS AND DEPTH SET

INITIAL PROD. 6 Bbl. SAND Injun DEPTH 2017  
 GAS TEST No " " "  
 SHOT 9/27/16 QUARTS 20 " " "2017-2037  
 REMARKS \_\_\_\_\_

REPORTED BY POCA district ABANDONED \_\_\_\_\_



STATE OF WEST VIRGINIA  
DEPARTMENT OF MINES  
OIL AND GAS DIVISION

428

WELL RECORD

Permit No. 513-A

Oil or Gas Well \_\_\_\_\_ (KIND)

Company W. L. Heeter & C. R. Nichols  
Address Spencer, West Virginia  
Farm Mary J. Gibson Acres 17.5  
Location (waters) \_\_\_\_\_  
Well No. 9 Elev. 954.16  
District Walton County Roane  
The surface of tract is owned in fee by Mary J. Gibson  
Address \_\_\_\_\_  
Mineral rights are owned by Mary J. Gibson  
Address Walton, W. Va.

Casing and Tubing	Used in Drilling	Left in Well	Packers
Size			Kind of Packer
16			
13			
10			Size of
8 1/4			
6 3/8	1902		Depth set 1902
5 3/16			
3			Perf. top
2			Perf. bottom
Liners Used			Perf. top
			Perf. bottom

Drilling commenced \_\_\_\_\_  
Drilling completed \_\_\_\_\_  
Date Shot \_\_\_\_\_ From \_\_\_\_\_ To \_\_\_\_\_  
With \_\_\_\_\_  
Open Flow \_\_\_\_\_ /10ths Water in \_\_\_\_\_ Inch  
\_\_\_\_\_ /10ths Merc. in \_\_\_\_\_ Inch  
Volume \_\_\_\_\_ Cu. Ft.  
Rock Pressure \_\_\_\_\_ lbs. \_\_\_\_\_ hrs.  
Oil \_\_\_\_\_ bbls., 1st 24 hrs.  
Fresh water \_\_\_\_\_ feet \_\_\_\_\_ feet  
Salt water \_\_\_\_\_ feet \_\_\_\_\_ feet

CASING CEMENTED \_\_\_\_\_ SIZE \_\_\_\_\_ No. Ft. \_\_\_\_\_ Date \_\_\_\_\_  
COAL WAS ENCOUNTERED AT \_\_\_\_\_ FEET \_\_\_\_\_ INCHES  
\_\_\_\_\_ FEET \_\_\_\_\_ INCHES FEET \_\_\_\_\_ INCHES  
\_\_\_\_\_ FEET \_\_\_\_\_ INCHES FEET \_\_\_\_\_ INCHES

Formation	Color	Hard or Soft	Top	Bottom	Oil, Gas or Water	Depth Found	Remarks
Dunkard Sand			720	818			
Salt Sand			1496	1700			
Water H. F.			1670				
Maxon Sand			1790	1839			
Big Lime-			1859	1997			
Big Injun Sand			1997	2040			
Gas			2001				
Oil			2017				
TOTAL DEPTH			2045				

1997  
- 1998  
1998

FEB 17 1949  
(Over)