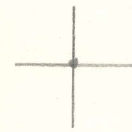


LATITUDE 38°45'

101°18' LONGITUDE



1.96 W
5.56 S

7'5 OGIS topo location

7.5' loc _____ 15' loc _____
_____ (calc.) _____

Company _____

Farm _____

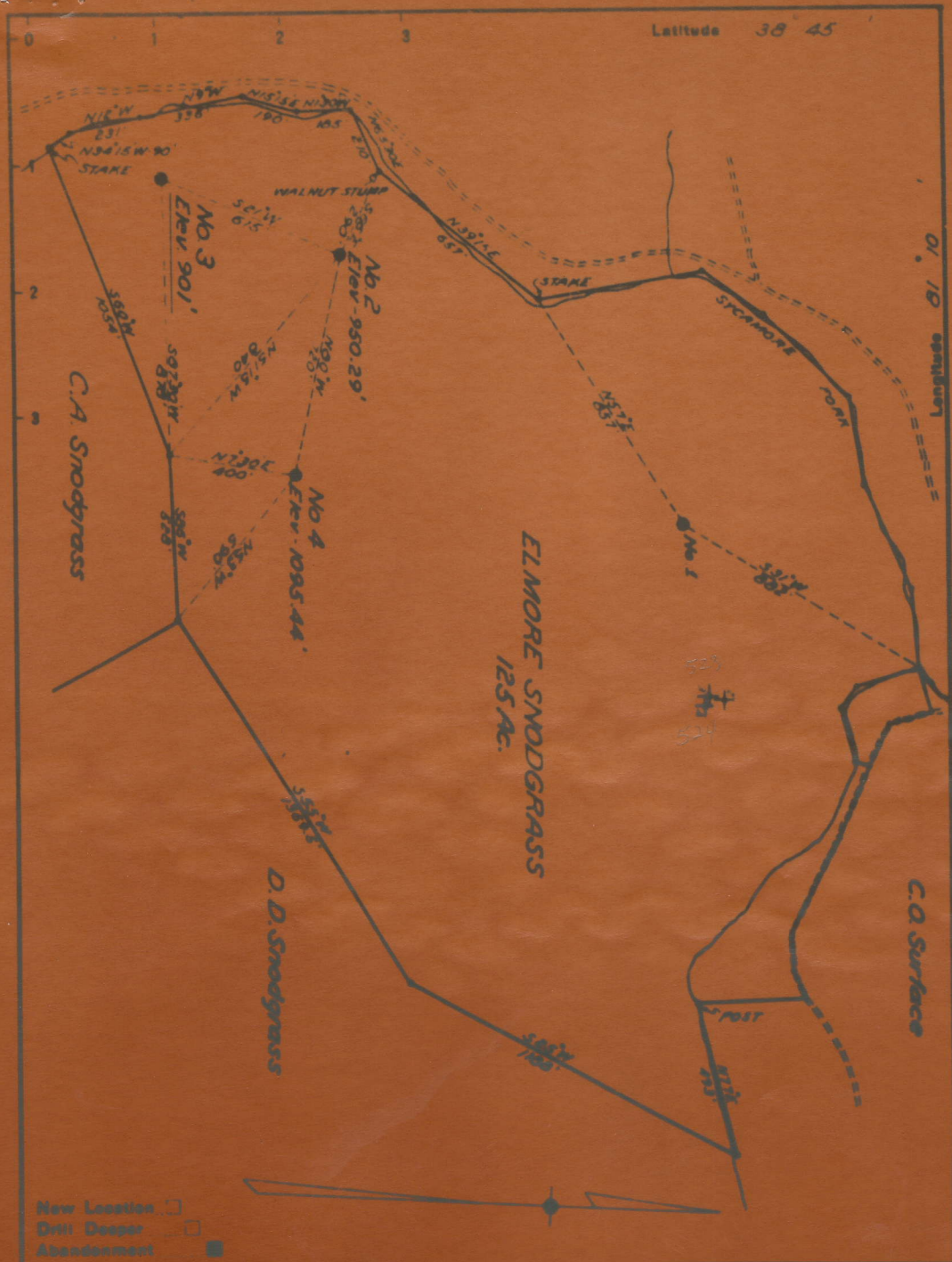
Quad Otter (NW)

County Roane

District Smithfield

WELL LOCATION MAP

File No. 087-5244



Company UNITED FUEL GAS CO
 Address CHARLESTON, W.VA
 Farm ELMORE SNODGRASS
 Tract Area 125 Lease No.

STATE OF WEST VIRGINIA
 DEPARTMENT OF MINES
 OIL AND GAS DIVISION
 CHARLESTON

SNODGRASS, ELMORE, NO. 4.

Roa-524-A.

By United Fuel Gas Co.

Smithfield Dist.

see microfilm for
well record & plot