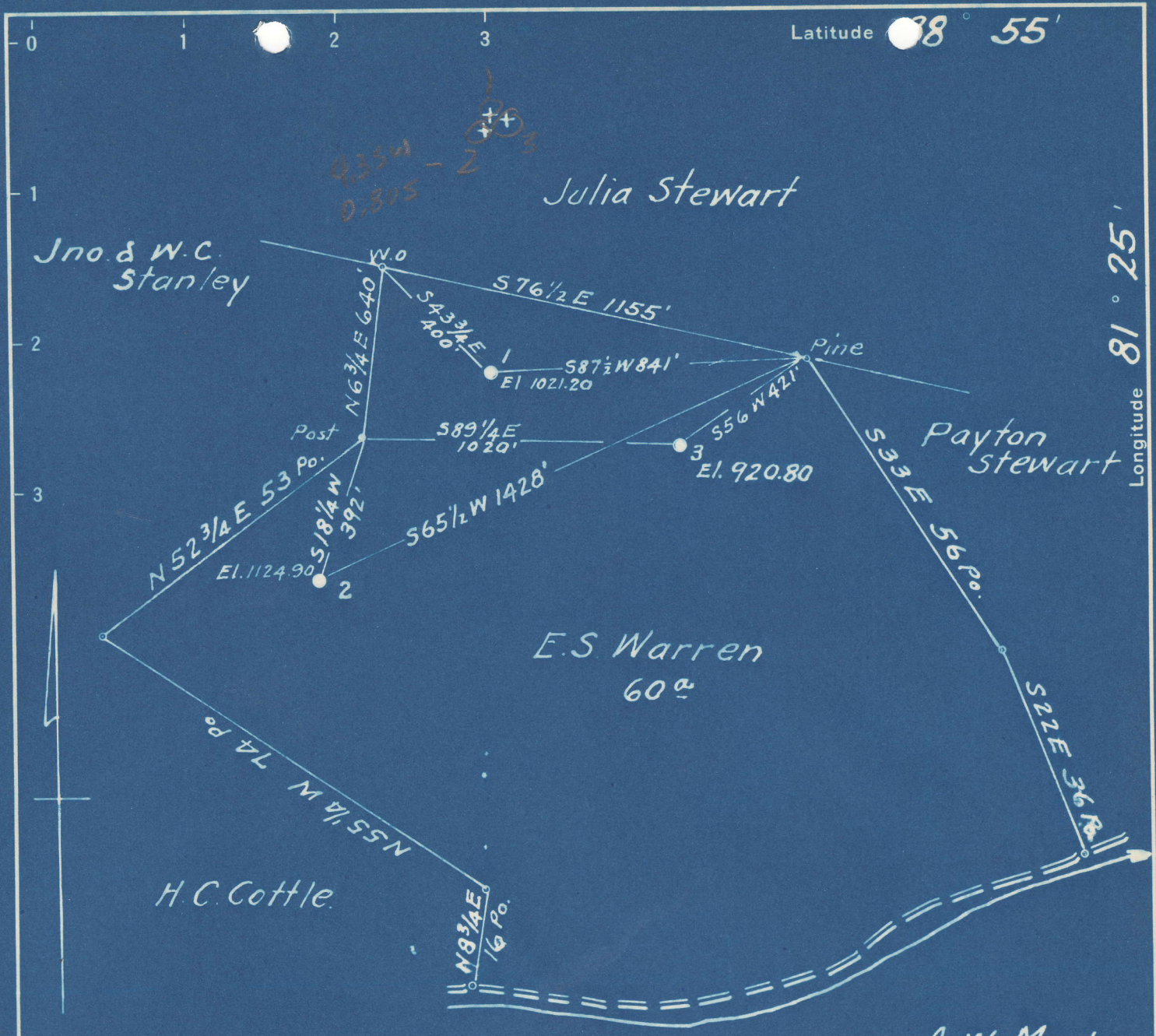


Latitude 38° 55'

Longitude 81° 25'



No Coal.
 Surface: E.S. Warren
 Liverpool, W. Va.

A.W. Marks

#1	0.70 S	4.37 W
#3	0.71 S	4.26 W
#2	0.80 S	4.21 W

New Location
 Drill Deeper
 Abandonment

S36 W49

Company A.R. Kelly
 Address Parkersburg, W. Va.
 Farm E.S. Warren
 Tract _____ Acres 60 Lease No. _____
 Well (Farm) No. 1-2-3 Serial No. _____
 Elevation (Spirit Level) See Above
 Quadrangle Spencer (WC)
 County Roane District Reedy
 Engineer Wm. S. Hayes
 Engineer's Registration No. 1429
 File No. _____ Drawing No. _____
 Date 9-24-48 Scale 1" = 400'

STATE OF WEST VIRGINIA
 DEPARTMENT OF MINES
 OIL AND GAS DIVISION
 CHARLESTON
 See microfilm for well records
WELL LOCATION MAP
 ROA-558-A-#1
 FILE NO. ROA-559-A-#3
 ROA-560-A-#2
 + Denotes location of well on United States Topographic Maps, scale 1 to 62,500, latitude and longitude lines being represented by border lines as shown.
 - Denotes one inch spaces on border line of original tracing.