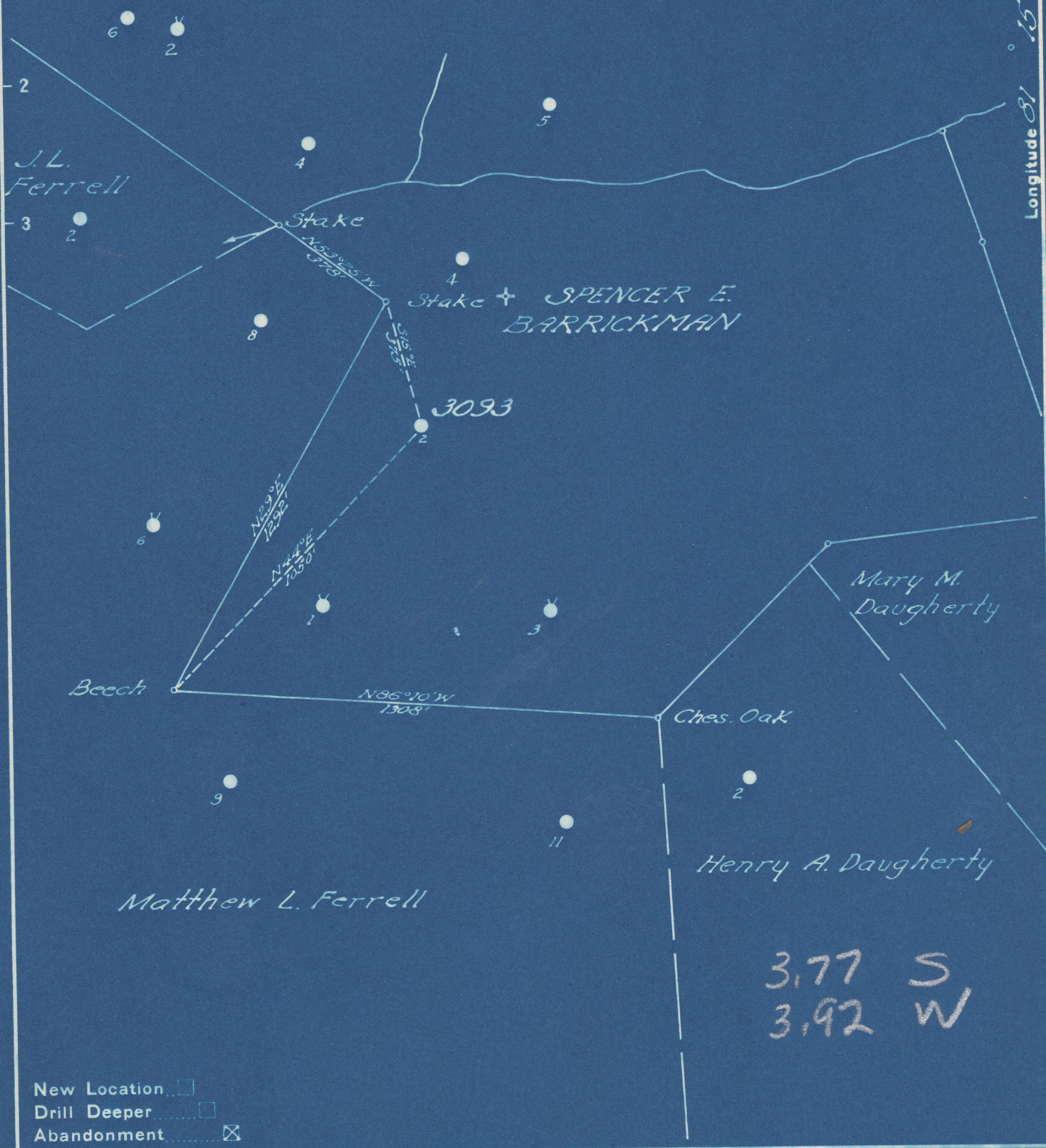


Latitude 38° 45'

Longitude 81° 15'

F. M. Summers



3.77 S  
3.92 W

Company UNITED FUEL GAS CO.  
 Address CHARLESTON, W.VA.  
 Farm S. E. BARRICKMAN  
 Tract \_\_\_\_\_ Acres 66 Lease No. 1792  
 Well (Farm) No. 2 Serial No. 3093  
 Elevation (Spirit Level) 1048.  
 Quadrangle WALTON  
 County ROANE District SMITHFIELD  
 Engineer [Signature]  
 Engineer's Registration No. 662  
 File No. 78-83 Drawing No. \_\_\_\_\_  
 Date 3-5-49 Scale 1" = 400'

STATE OF WEST VIRGINIA  
 DEPARTMENT OF MINES  
 OIL AND GAS DIVISION  
 CHARLESTON

*see Microfilm for Well Record*

**WELL LOCATION MAP**  
 FILE NO. ROA-625-A

+ Denotes location of well on United States Topographic Maps, scale 1 to 62,500, latitude and longitude lines being represented by border lines as shown.

- Denotes one inch spaces on border line of original tracing.

6-6 (196)



O+G Div. An. Rpt 1949, Tab 6  
Roane 625A comp 1914 oil well TD 2133

Quarterly  
Date  
New

STATE OF WEST VIRGINIA  
DEPARTMENT OF MINES  
OIL AND GAS DIVISION  
CHARLESTON

WELL LOCATION MAP  
File No. 625A-2133

4. Distance from center of well to center of  
topographic map, scale 1:62,500  
This map shows the location of the well  
by dotted lines as shown  
- Contours are shown in solid lines  
at 20-foot intervals

Company  
Address  
Farm  
Tract  
Well  
Elevation  
Coordinates  
County  
Elevation  
Elevation  
Elevation  
Elevation

6-6 (196)