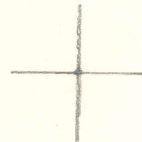


LATITUDE 38° 50'



1.75W
2.57S

LONGITUDE 51° 18'

7'5 OGIS topo location

7.5' loc _____ 15' loc _____
_____ (calc.) _____

Company _____

Farm _____

Quad Spencer (SE)

County Roane

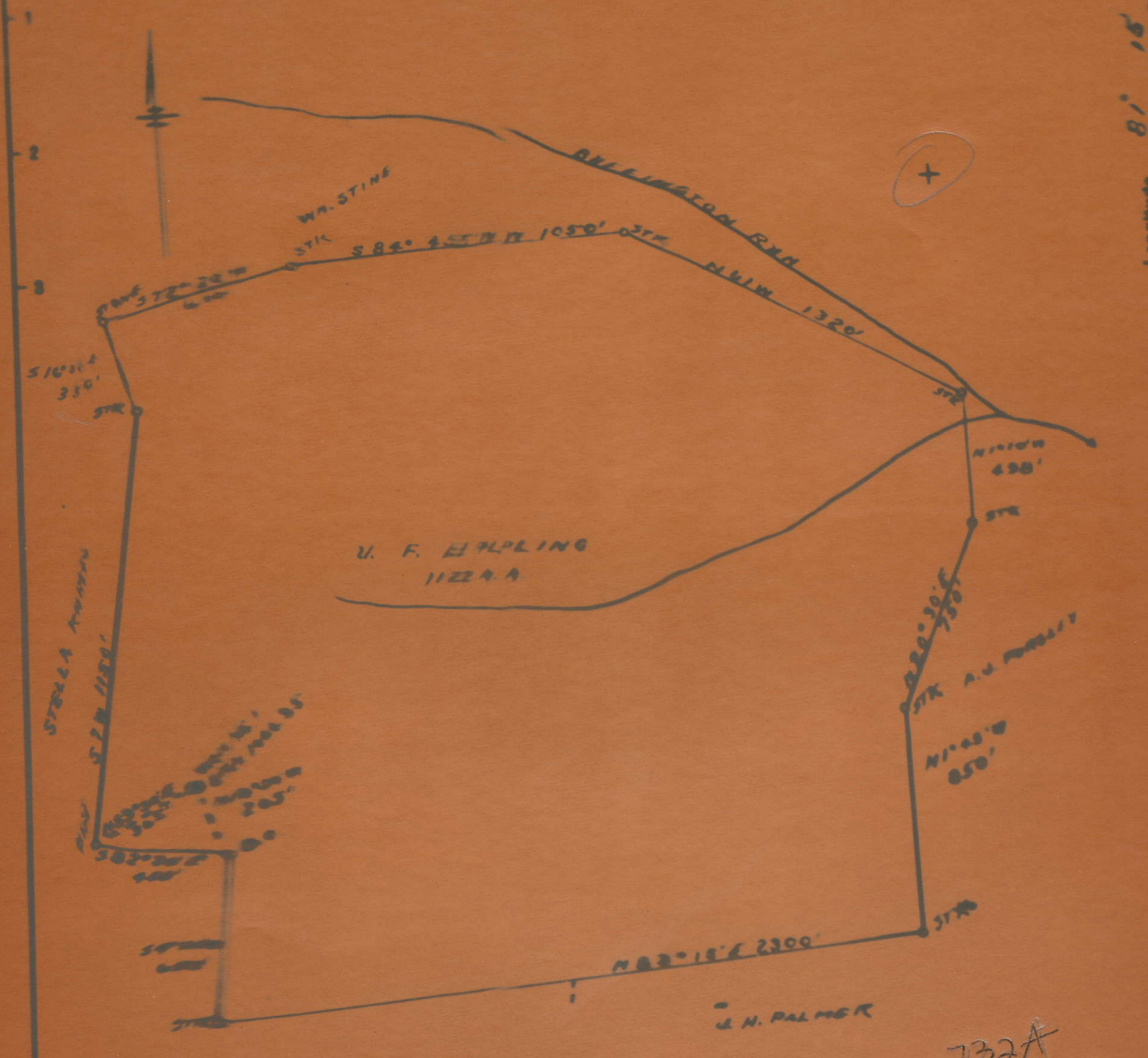
District Spencer

WELL LOCATION MAP

File No. 087 - 732A

Latitude 38 50'

Longitude 81 15'



732A

New Location
 Drill Hoop
 Abandonment

Company OKMURLEE SUPPLY CORP.
 Address OKMURLEE, OKLAHOMA

STATE OF WEST VIRGINIA
 DEPARTMENT OF MINES
 OIL AND GAS DIVISION

EPLING, A. P., NO. 1.

Roa-732-A.

By Weston-Spencer Corp.

Spencer Dist.

(NO PLAT)

see microfilm
for Plat & Well Record