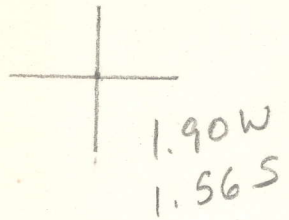


LATITUDE 38° 56'



LONGITUDE 91° 18'

7.5 OGIS topo location

7.5' loc _____ 15' loc _____
 _____ (calc.) _____

Company _____

Farm _____

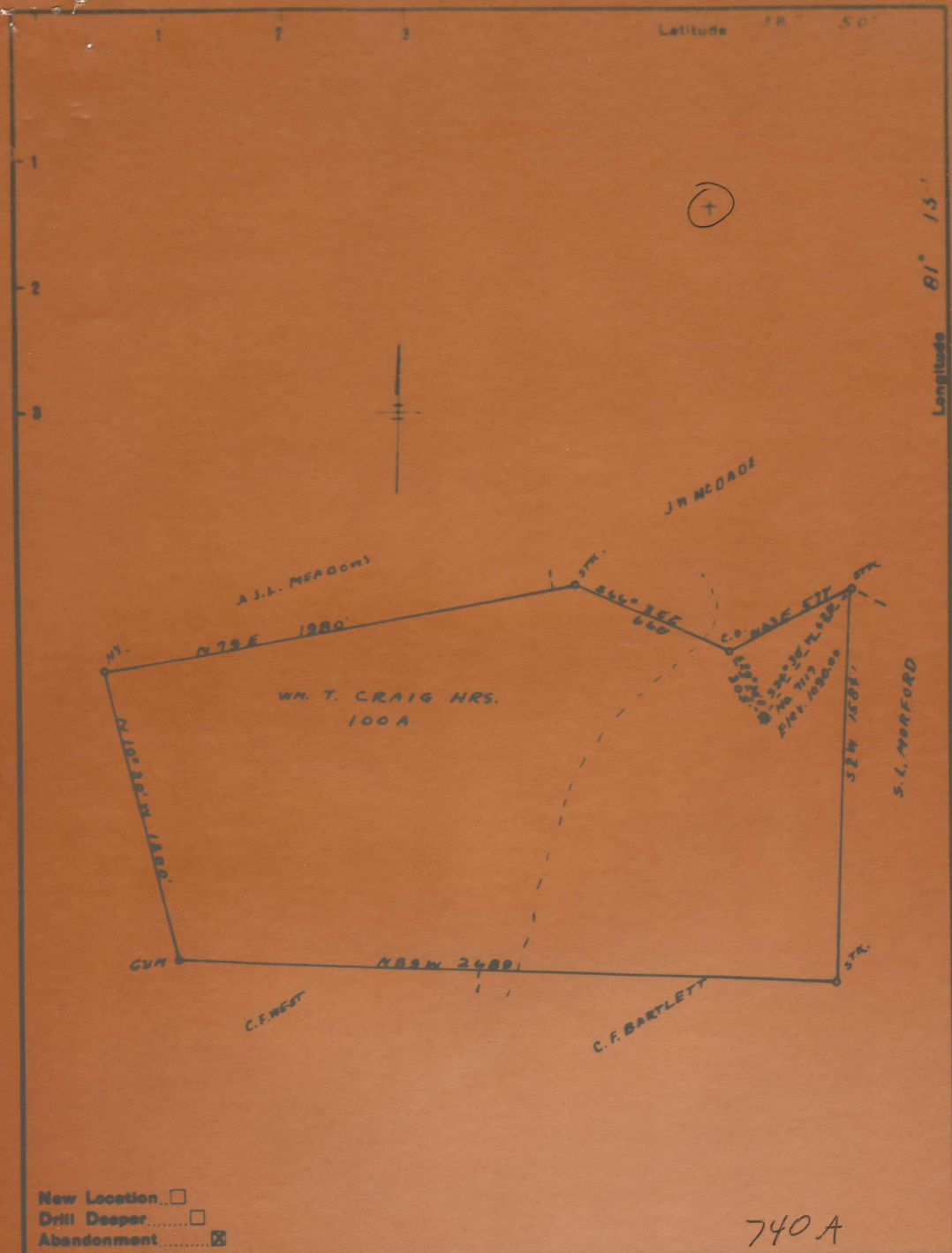
Quad Spencer (SE)

County Roane

District Spencer

WELL LOCATION MAP

File No. 087-740A



New Location
 Drill Deeper
 Abandonment

740A

Company WILLIAM CASSADY
 Address SPENGER, W. VA.

STATE OF WEST VIRGINIA
 DEPARTMENT OF MINES
 OIL AND GAS DIVISION

CRAIG HEIRS NO. 7117.

Roa-740-A.

By William Cassady.

Spencer Dist.

~~(NO PLAT)~~

see microfilm for
Well record &
Plat