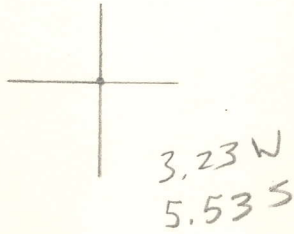


LATITUDE 30° 55'

LONGITUDE 81° 51'



7'5 OGIS topo location

7.5' loc _____ 15' loc _____
 _____ (calc.) _____

Company _____

Farm _____

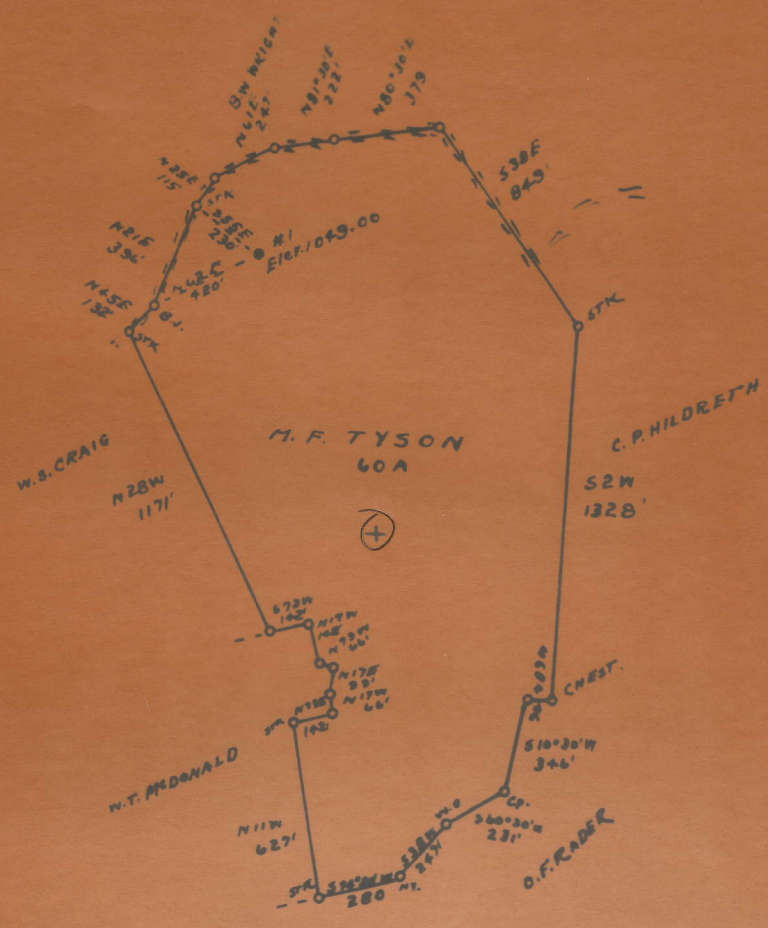
Quad Spencer (EC)

County Roane

District Spencer

WELL LOCATION MAP

File No. 087-760A



New Location
 Drill Deeper
 Abandonment

760A

Company WEST & SPENCER CORP.
1401 CENTENNIAL AVE.
 Address MCKEESPORT, PA.
 Firm M.F. TYSON
 Total Acres 60 Lease No.

STATE OF WEST VIRGINIA
 DEPARTMENT OF MINES
 OIL AND GAS DIVISION
 CHARLESTON

M. F. TYSON NO. 1 WELL.

Spencer District, Roane County, W. Va.
By South Penn Oil Co.
On 60 acres.
Keller Map I-22.
Elevation.....
Completed.....
Oil well. Big Injun Sand.
From Heck's notes.

760A

see microfilm for Hist

	Top.	Bottom.
Big Injun Sand	2158	2173
Total depth		2173

Probably Big Injun. Check for Berea here or on adjoining 244-3/16-acre tract.