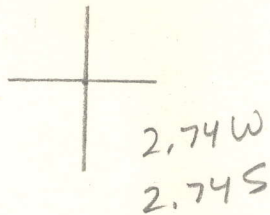


LATITUDE 38° 45'



156° 18' LONGITUDE

7'5 OGIS topo location

7.5' loc \_\_\_\_\_ 15' loc \_\_\_\_\_  
 \_\_\_\_\_ (calc.) \_\_\_\_\_

Company \_\_\_\_\_

Farm \_\_\_\_\_

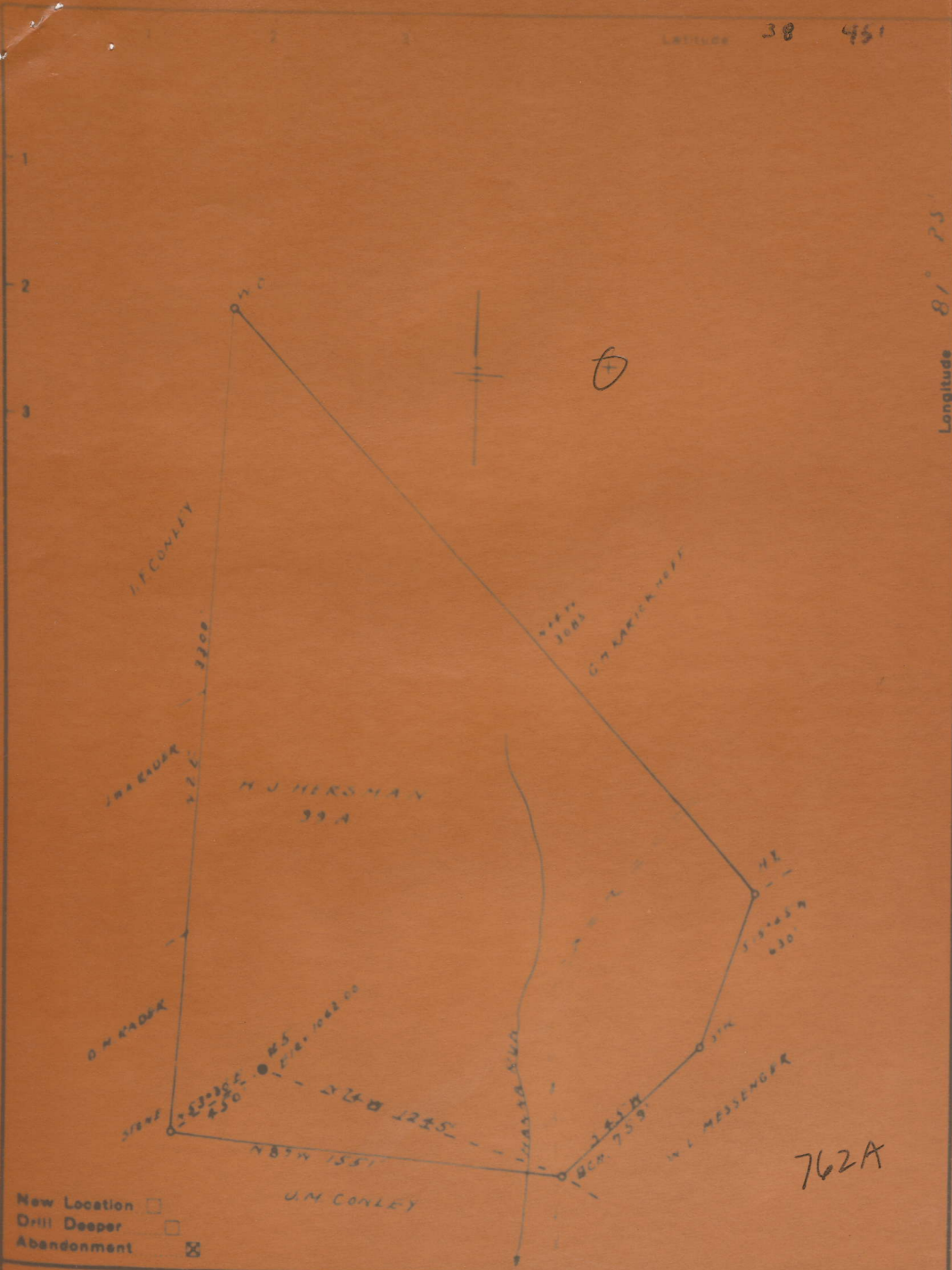
Quad Walton (NW)

County Boone

District Hager

WELL LOCATION MAP

File No. 087-7624



762A

- New Location
- Drill Deeper
- Abandonment

Company WEST & SPENCER CORP.  
 Address 1401 CENTENNIAL AVE.  
HARRISBURG PA.  
 Farm H.W. HERSMAN

STATE OF WEST VIRGINIA  
 DEPARTMENT OF MINES  
 OIL AND GAS DIVISION  
 CHARLESTON

HERSMAN, H. J., NO. 5.

Roa-762-A.

By Weston-Spencer Corp.

Harper Dist.

Well record &

~~(NO PLAT)~~ Plat on microfilm