

LATITUDE 38° 55'

51° 18' LONGITUDE

3.24 S
1.84 W
3.24 S

7'5 OGIS topo location

7.5' loc _____	15' loc _____
_____	(calc.) _____

Company \_\_\_\_\_

Farm \_\_\_\_\_

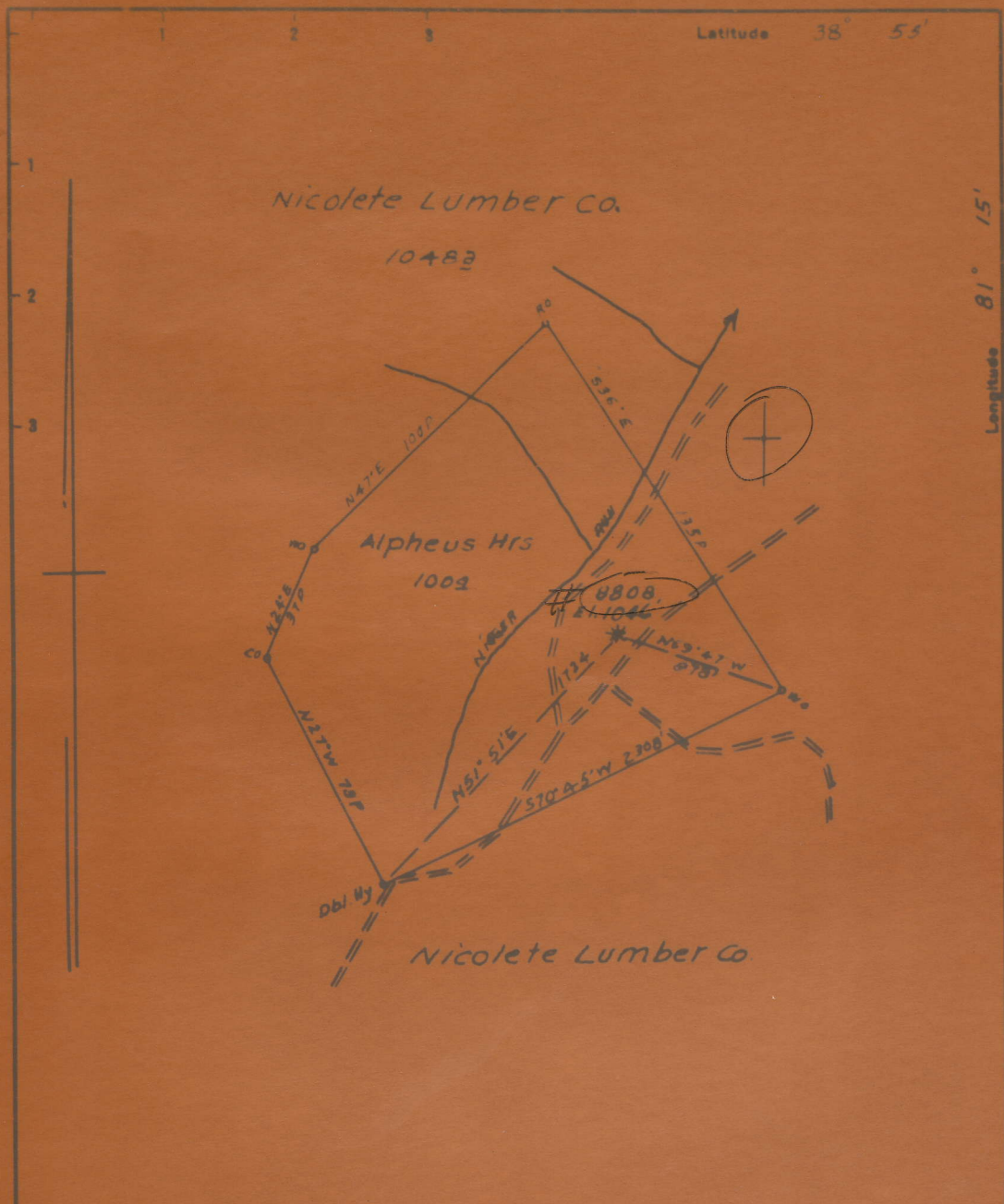
Quad Spencer (EC)

County Roane

District Spencer

WELL LOCATION MAP

File No. 087-779A



- New Location
- Drill Deeper
- Abandonment

779A  
Mapsh 525-539 W38 FB 1016 P-31

Company Hope Natural Gas Co

STATE OF WEST VIRGINIA

HENRY ALPHEUS NO. 1-107) WELL.

8808

779A

Spencer District, Roane County, W. Va.  
By Hope Natural Gas Co.  
On 98 acres.  
Keller Map I-22.  
Elevation..... 1046  
Completed..... 4/24/1919  
Gas well. Initial rock pressure, 450 lbs.  
From Heck's notes.

see microfilm  
for well record  
& Plat

	Top.	Bottom.
Salt Sand (salt water, 1775')	1660	- 1960
Little <del>ma</del> Lime	1960	- 1970
Pencil Cave	1970	- 1974
Big Lime	1974	- 2090
Big Injun Sand	2090	- 2152
Berea Sand (gas, 2532')	2518	- 2542