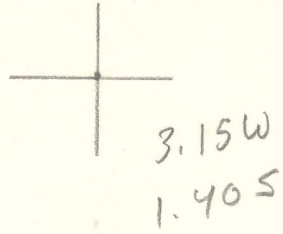


LATITUDE 38° 50'



151° 18' LONGITUDE

7'5 OGIS topo location

7.5' loc _____ 15' loc _____
 _____ (calc.) _____

Company _____

Farm _____

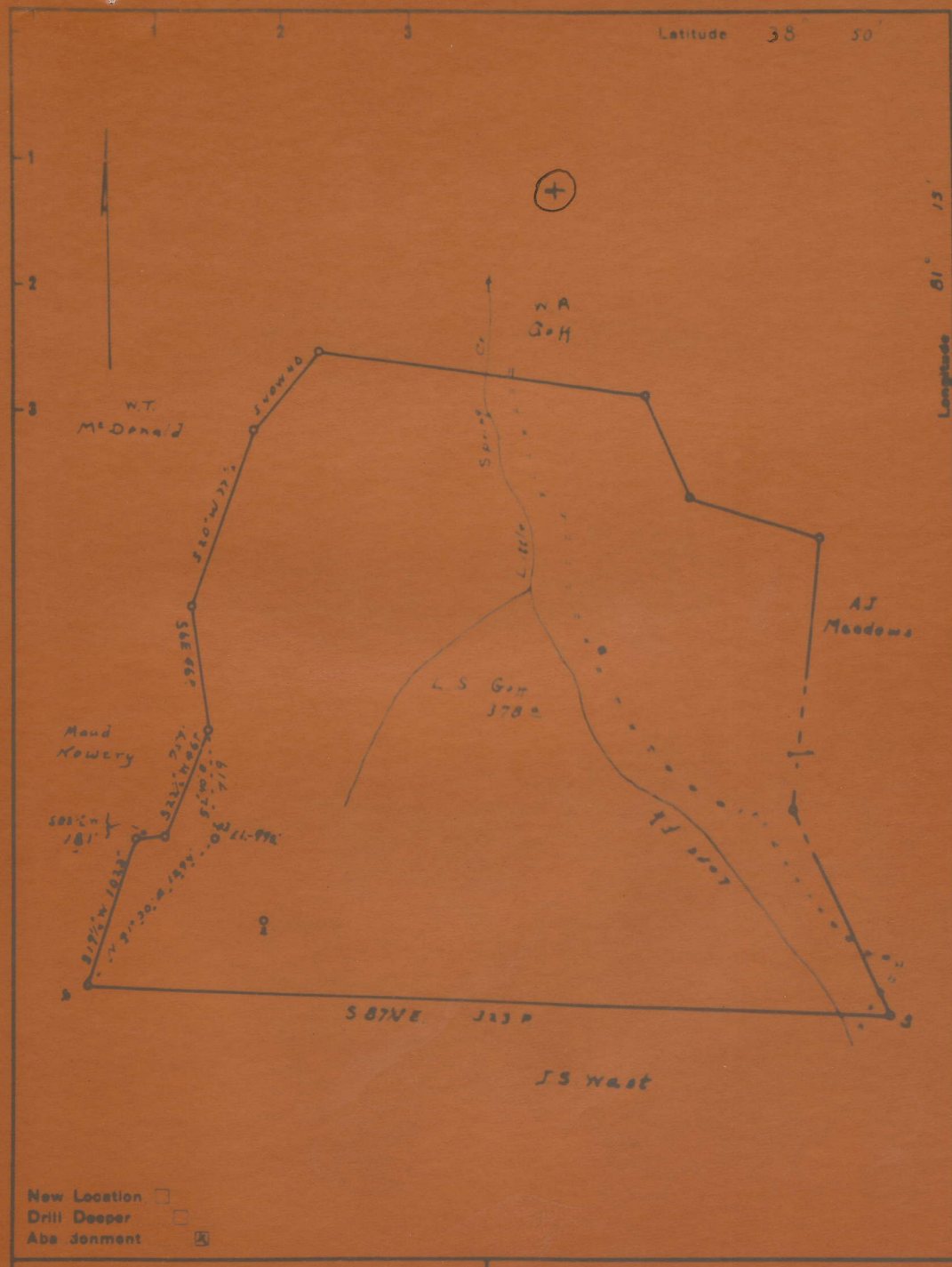
Quad Spencer (SE)

County Rowe

District Spencer

WELL LOCATION MAP

File No. 087-788A



Company Moats Drilling & Equipment Co.
 Address 1701 Duane St. Parkersburg W.V.

STATE OF WEST VIRGINIA
 DEPARTMENT OF MINES

GOFF, L. S., NO. 3.

Roa-788-A.

By Moats Drilling & Equipment Co.

Spencer Dist.

~~NO PLAT~~

See microfilm for well record & Plat