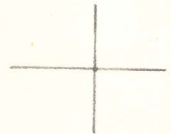


LATITUDE 38°50'

LONGITUDE 51°18'



1.32W  
5.42S

7'5 OGIS topo location

7.5' loc \_\_\_\_\_  
\_\_\_\_\_

15' loc \_\_\_\_\_  
(calc.) \_\_\_\_\_

Company \_\_\_\_\_

Farm \_\_\_\_\_

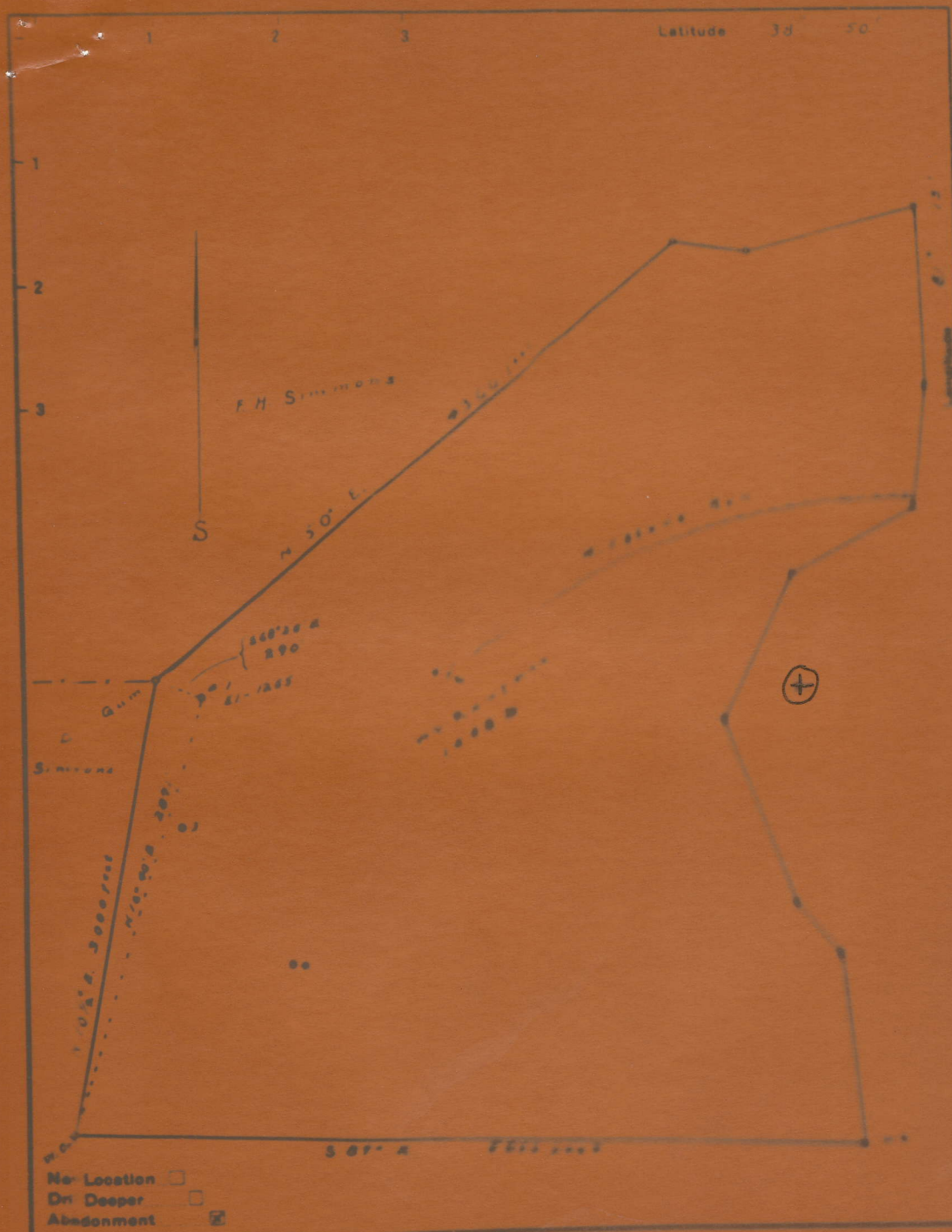
Quad Spencer (SE)

County Rowe

District Smithfield

WELL LOCATION MAP

File No. 087-790A



Company Arthur S Meale  
 Address 1781 Dewey Parkersburg W. Va.  
 Fax W. Va. 26401

STATE OF WEST VIRGINIA  
 DEPARTMENT OF MINES  
 OIL AND GAS DIVISION  
 CHARLOTTE

KAUFMAN, WM., NO. 1.

Roa-790-A.

By Arthur Moats.

Smithfield Dist.

~~NO PLAT~~

See Microfilm for Well Record & Plat