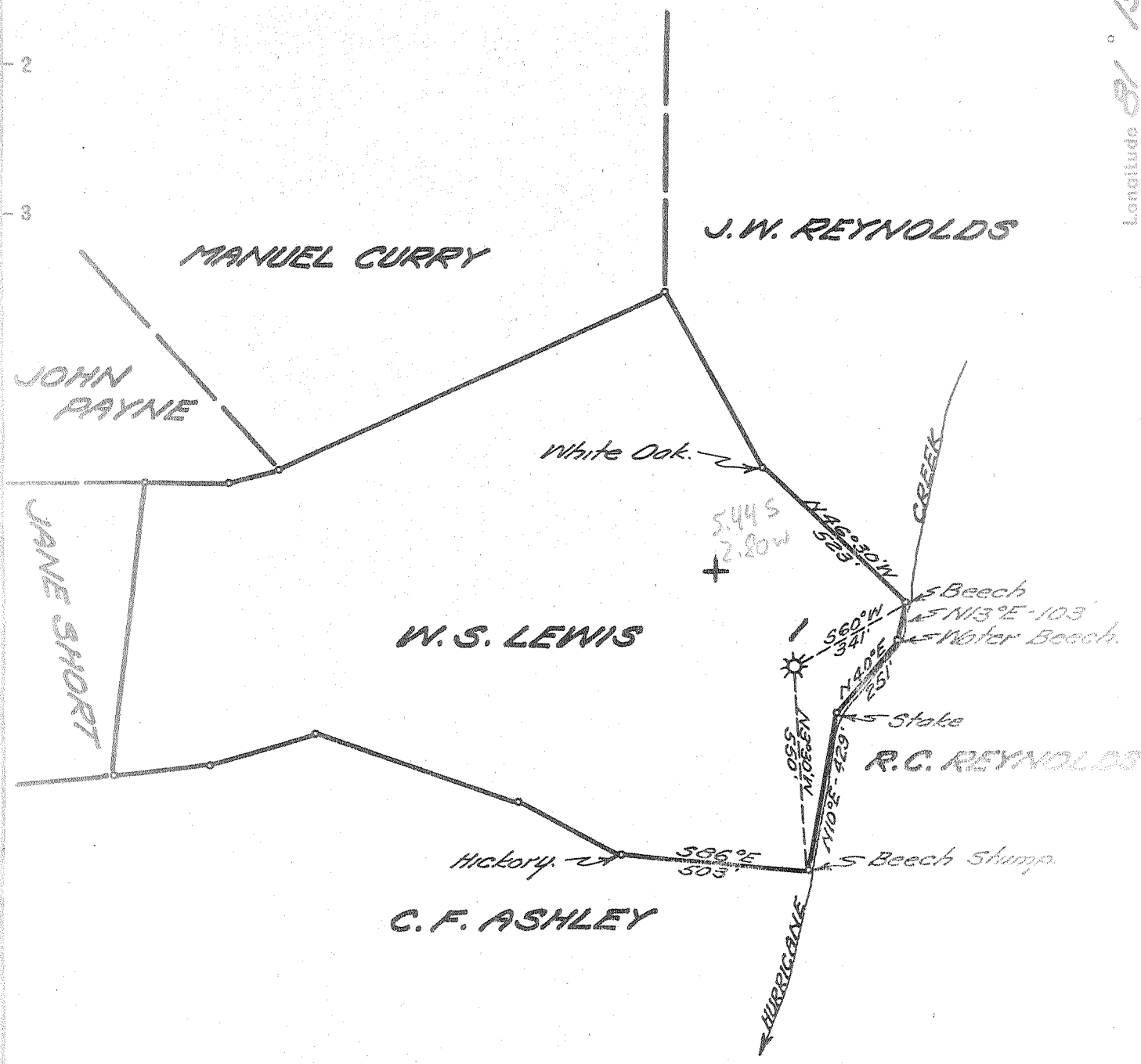


Latitude 38 40

Longitude 81 15



New Location...
 Drill Deeper.....
 Abandonment.....

Company UNITED FUEL GAS CO.
 Address CHARLESTON, W. VA.
 Farm W. S. LEWIS
 Tract _____ Acres 45.50 ^{PT. DEED} Lease No. 2396
 Well (Farm) No. _____ Serial No. 1
 Elevation (Spirit Level) 762.7'
 Quadrangle WALTON
 County ROANE District GEARY
 Engineer Seibert K. Howell
 Engineer's Registration No. 2529
 File No. 78-75 Drawing No. _____
 Date 7-15-54 Scale 1" = 400'

STATE OF WEST VIRGINIA
 DEPARTMENT OF MINES
 OIL AND GAS DIVISION
 CHARLESTON

WELL LOCATION MAP
 FILE NO. ROA-854-A

+ Denotes location of well on United States Topographic Maps, scale 1 to 62,500, latitude and longitude lines being represented by border lines as shown.

- Denotes one inch spaces on border line of original tracing.

see microfiche for well record

Geary District, Roane County, W. Va.

By Kanawha Natural Gas, Light & Heat Co.

Sold to Carnegie Co.

Gas well.

Drilled 1899

Obtained by Campbell, Nov. 2, 1902.

Authority, F. P. Grosscup, Charleston, W. Va.

No record of Well No. 2.

Record from U. S. Geological Survey, April 8, 1939.

	Thickness.	Depth.
Sand, (Cow Run), at	65	- 1075
Sand, (Salt), at	210	- 1230
Sand, (Big Injun), at	15	- 1674

See microfilm for well record

Geary District, Roane County, W. Va.

Starts 310' under great pebbly sandstone.

	Top.	Bottom.	Thickness.
Cow Run Sand	1075	- 1140	65
Salt Sand	1230	- 1440	210
Big Injun Sand	1674	- 1689	15

No record of Well No. 2.