

+ 0.775  
1.82 W

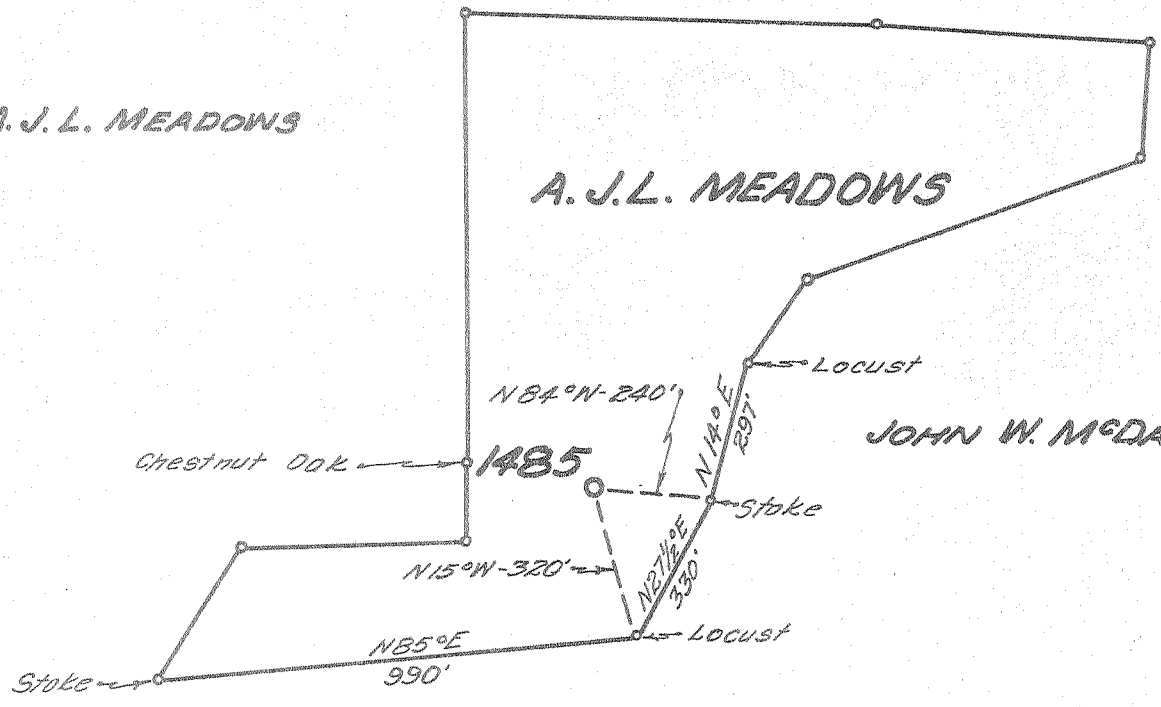
MALINDA F. HILDRETH

A. J. L. MEADOWS

A. J. L. MEADOWS

JOHN W. MCDADE

A. G. RINION



New Location..   
 Drill Deeper.....   
 Abandonment.....

Company UNITED FUEL GAS CO.  
 Address CHARLESTON, W.VA.  
 Farm A.J.L. MEADOWS  
 Tract \_\_\_\_\_ Acres 50 Lease No. 16524  
 Well (Farm) No. 1 Serial No. 1485  
 Elevation (Spirit Level) 1160.0'  
 Quadrangle SPENCER  
 County ROANE District SPENCER  
 Engineer Seybert R. Ferrell  
 Engineer's Registration No. 2529  
 File No. 80-91 Drawing No. \_\_\_\_\_  
 Date 8-18-54 Scale 1"=400

STATE OF WEST VIRGINIA  
 DEPARTMENT OF MINES  
 OIL AND GAS DIVISION  
 CHARLESTON  
*see microfilm for Well Record*  
**WELL LOCATION MAP**  
 FILE NO. ROA-873-A

+ Denotes location of well on United States Topographic Maps, scale 1 to 62,500, latitude and longitude lines being represented by border lines as shown.  
 - Denotes one inch spaces on border line of original tracing.