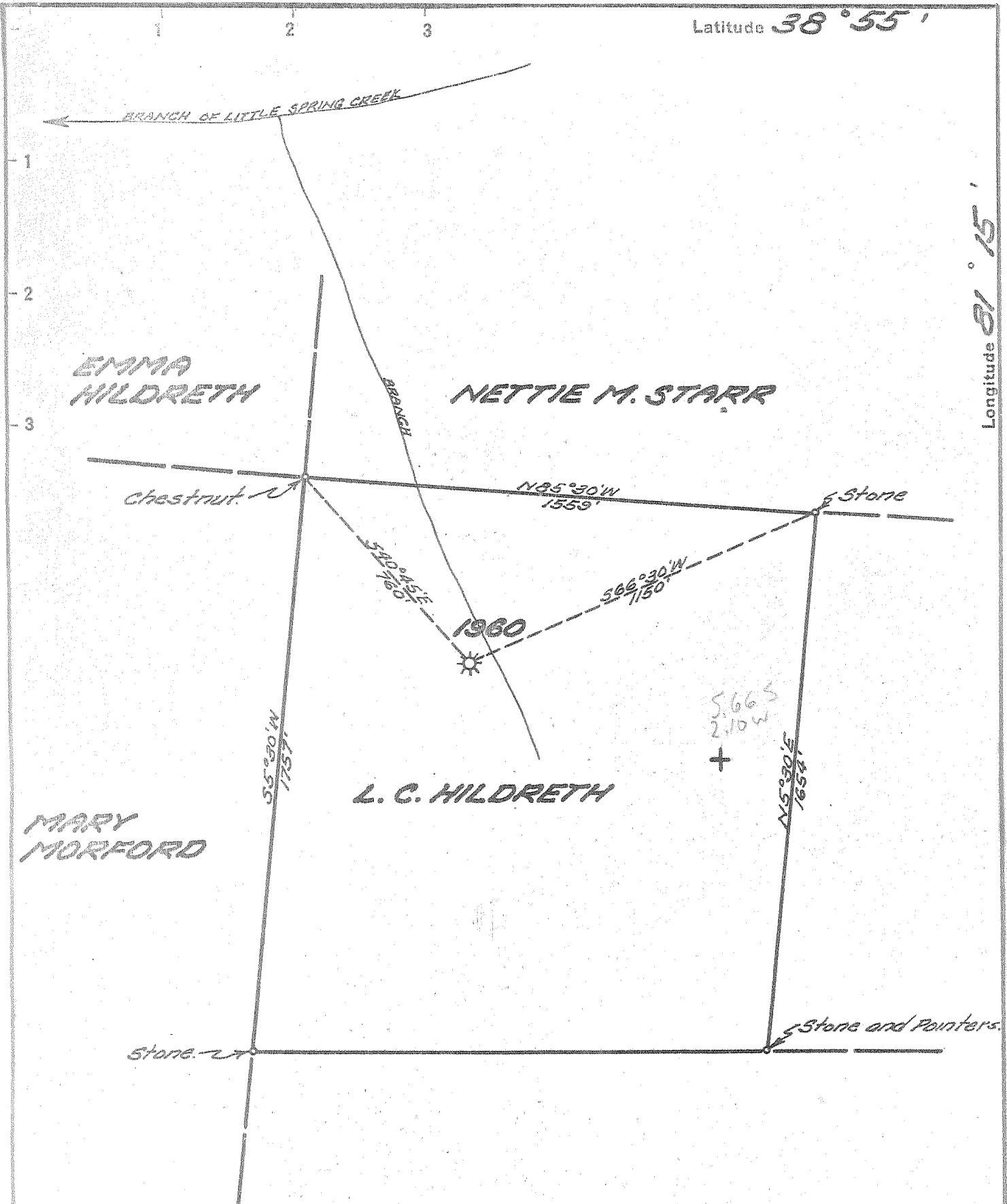


Latitude 38° 55'

Longitude 81° 15'



- New Location
- Drill Deeper
- Abandonment

Company UNITED FUEL GAS CO.  
 Address CHARLESTON, W. VA.  
 Farm L. C. HILDRETH  
 Tract \_\_\_\_\_ Acres 70 Lease No. 17542  
 Well (Farm) No. 1 Serial No. 1960  
 Elevation (Spirit Level) 859'  
 Quadrangle SPENCER  
 County ROANE District SPENCER  
 Engineer Hubert Powell  
 Engineer's Registration No. 2529  
 File No. 80-91 Drawing No. \_\_\_\_\_  
 Date 8-18-54 Scale 1" = 400'

STATE OF WEST VIRGINIA  
 DEPARTMENT OF MINES  
 OIL AND GAS DIVISION  
 CHARLESTON

WELL LOCATION MAP  
 FILE NO. ROA-874-B

+ Denotes location of well on United States Topographic Maps, scale 1 to 62,500, latitude and longitude lines being represented by border lines as shown.  
 - Denotes one inch spaces on border line of original tracing.