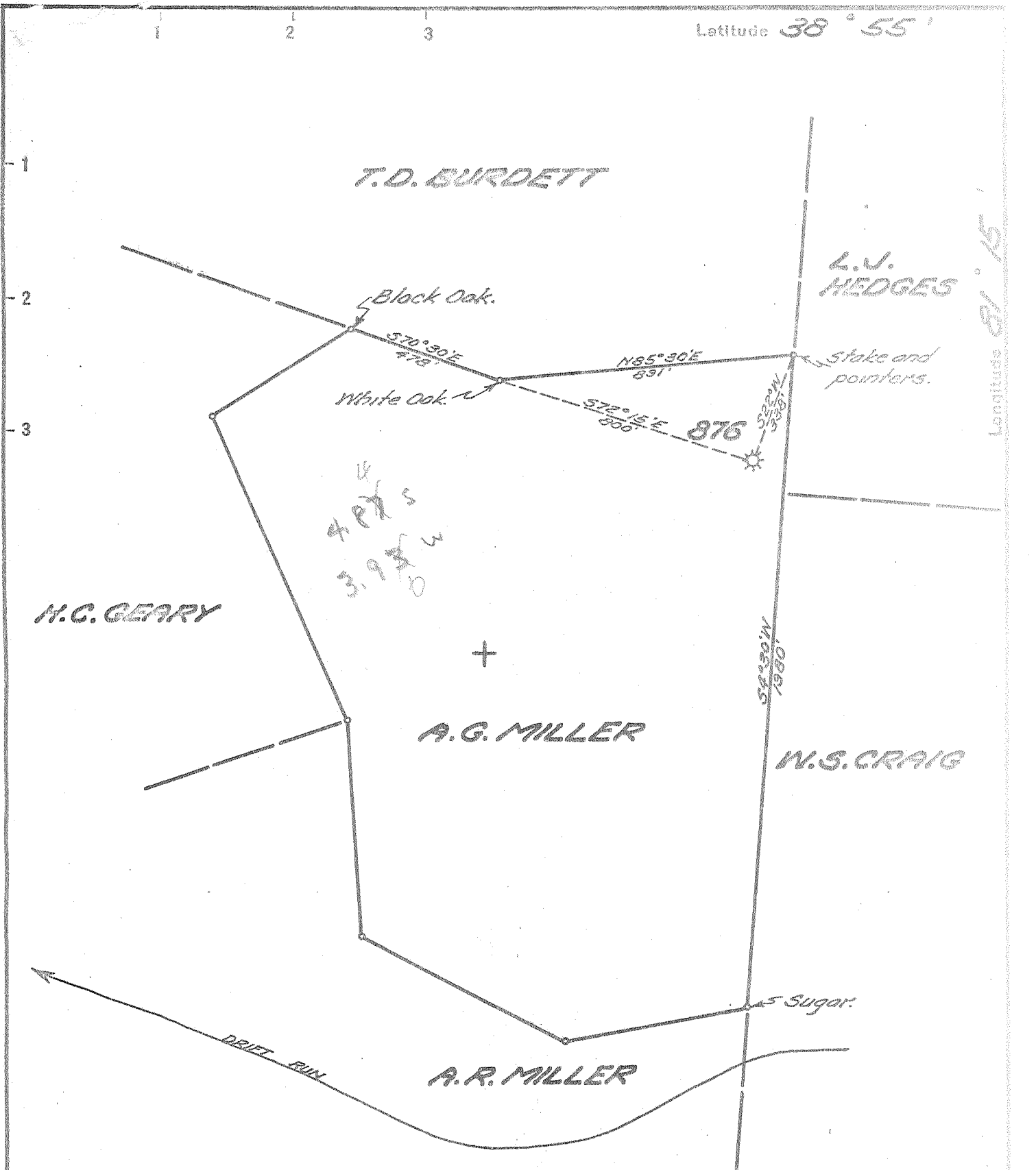


Latitude 38° 55'



4  
 4.875  
 3.930  
 W

- New Location..
- Drill Deeper.....
- Abandonment.....

Company UNITED FUEL GAS CO.  
 Address CHARLESTON, W. VA.  
 Farm A.G. MILLER  
 Tract \_\_\_\_\_ Acres 64 Lease No. 12543  
 Well (Farm) No. \_\_\_\_\_ Serial No. 876  
 Elevation (Spirit Level) 932.8'  
 Quadrangle SPENCER  
 County ROANE District SPENCER  
 Engineer Paul E. Joachims  
 Engineer's Registration No. 669  
 File No. 78-93 Drawing No. \_\_\_\_\_  
 Date 8-31-54 Scale 1" = 400'

STATE OF WEST VIRGINIA  
 DEPARTMENT OF MINES  
 OIL AND GAS DIVISION  
 CHARLESTON

WELL LOCATION MAP  
 FILE NO. ROA-877-A

+ Denotes location of well on United States Topographic Maps, scale 1 to 62,500, latitude and longitude lines being represented by border lines as shown.

- Denotes one inch spaces on border line of original tracing.

877A  
70195

Spencer District, Roane County, W. Va.  
By United Fuel Gas Co.  
On 64 acres.  
Keller Map I-22.  
Elevation.....  
Completed Feb. 28, 1917.  
Gas well. 53/10 W. in 6 $\frac{5}{8}$ "  
S. P. - S-40141 - W-40.  
From Heck's notes.

	Top.	Bottom.
Big Lime	1989	- ....
Berea Sand (gas, 2530-39')	2516	- 2544
Total depth		2550



STATE OF WEST VIRGINIA  
DEPARTMENT OF MINES  
OIL AND GAS DIVISION

494

WELL RECORD

Oil or Gas Well Gas

(KIND)

Quadrangle Spencer  
Permit No. 877A

Company UNITED FUEL GAS CO.  
Address P.O. Box 1273, Charleston 25, W. Va.  
Farm A. G. Miller Acres 64  
Location (waters) Drift Run  
Well No. 876 Elev. 982.8'  
District Spencer County Roane  
The surface of tract is owned in fee by \_\_\_\_\_  
Address \_\_\_\_\_  
Mineral rights are owned by Anna C. Myers, et al  
Address Lanartine, Pa.

Drilling commenced 3-5-17  
Drilling completed 2-26-17  
Date Shot 5-20-20 From \_\_\_\_\_ To \_\_\_\_\_  
With 30 qts.

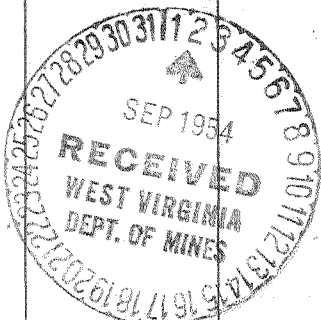
Open Flow 53 /10ths Water in 6-5/8 Inch  
\_\_\_\_\_ /10ths Merc. in \_\_\_\_\_ Inch  
Volume 3,706,000 Cu. Ft.  
Rock Pressure 272 lbs. 60 min. hrs.  
Oil \_\_\_\_\_ bbls., 1st 24 hrs.  
Fresh water \_\_\_\_\_ feet  
Salt water \_\_\_\_\_ feet

Casing and Tubing	Used in Drilling	Left in Well	Packers
Size			
16			Kind of Packer
13			<u>Anchor</u>
10	<u>840'</u>		Size of
8 1/4	<u>1176'</u>		<u>6-5/8"x3"</u>
6 5/8		<u>1999'</u>	Depth set
5 3/16			<u>2514'</u>
3		<u>2604</u>	Perf. top
<u>2 1/2"</u>		<u>2590'</u>	Perf. bottom
Liners Used			Perf. top
			Perf. bottom

CASING CEMENTED \_\_\_\_\_ SIZE \_\_\_\_\_ No. Ft. \_\_\_\_\_ Date \_\_\_\_\_

COAL WAS ENCOUNTERED AT \_\_\_\_\_ FEET \_\_\_\_\_ INCHES  
\_\_\_\_\_ FEET \_\_\_\_\_ INCHES FEET \_\_\_\_\_ INCHES  
\_\_\_\_\_ FEET \_\_\_\_\_ INCHES FEET \_\_\_\_\_ INCHES

Formation	Color	Hard or Soft	Top	Bottom	Oil, Gas or Water	Depth Found	Remarks
Pittsburgh Sand			700	740	6-5/8" BH Packer on bottom of 6-5/8" Casing		
Little Dunkard			1050	1075			
Big Dunkard			1140	1220			
Gas Sand			1340	1450			
1st Salt Sand			1785	1977			
Little Lime			1977	1987			
Pencil Cave			1987	1989			
Big Lime			1989	2094			
Big Injun			2094	2120			
Berea Sand			2516	2538			
Gas			2529	2537			
Total depth			2589'				



JUN 17 1955

