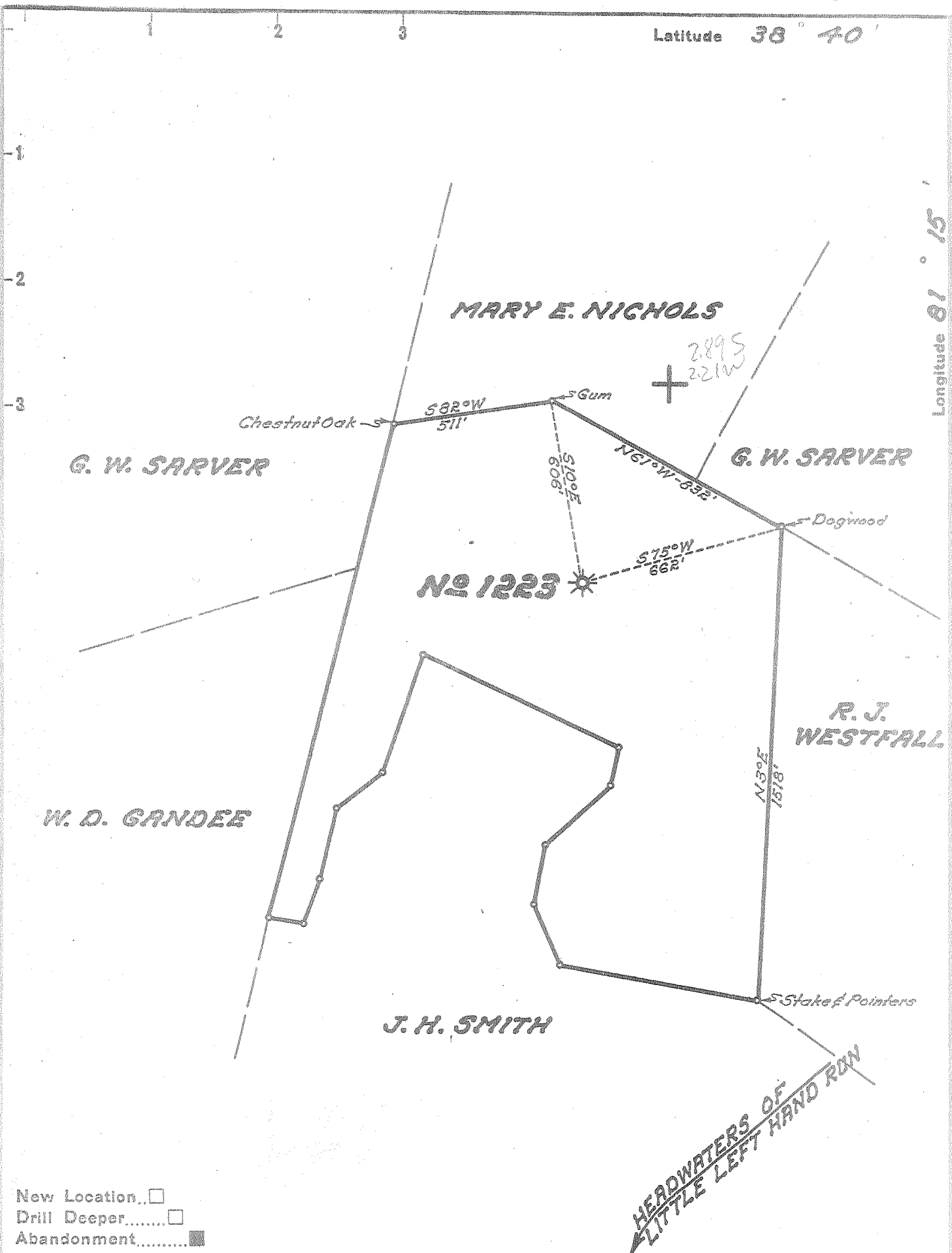


Latitude 38° 40'

Longitude 81° 15'



- New Location...
- Drill Deeper.....
- Abandonment.....

Company UNITED FUEL GAS CO.
 Address CHARLESTON, W. VA.
 Farm J. B. VINEYARD
 Tract _____ Acres 4 1/3 Lease No. 12549
 Well (Farm) No. _____ Serial No. 1223
 Elevation (Spirit Level) 1123.
 Quadrangle WALTON
 County ROANE District GEARY
 Engineer Seibert Russell
 Engineer's Registration No. 2529
 File No. 80-77 Drawing No. _____
 Date 12-10-54 Scale 1"=400'

STATE OF WEST VIRGINIA
 DEPARTMENT OF MINES
 OIL AND GAS DIVISION
 CHARLESTON

SEE MICROFILM FOR WELL RECORD

WELL LOCATION MAP

FILE NO. ROA-906-A

+ Denotes location of well on United States Topographic Maps, scale 1 to 62,500, latitude and longitude lines being represented by border lines as shown.

- Denotes one inch spaces on border line of original tracing.