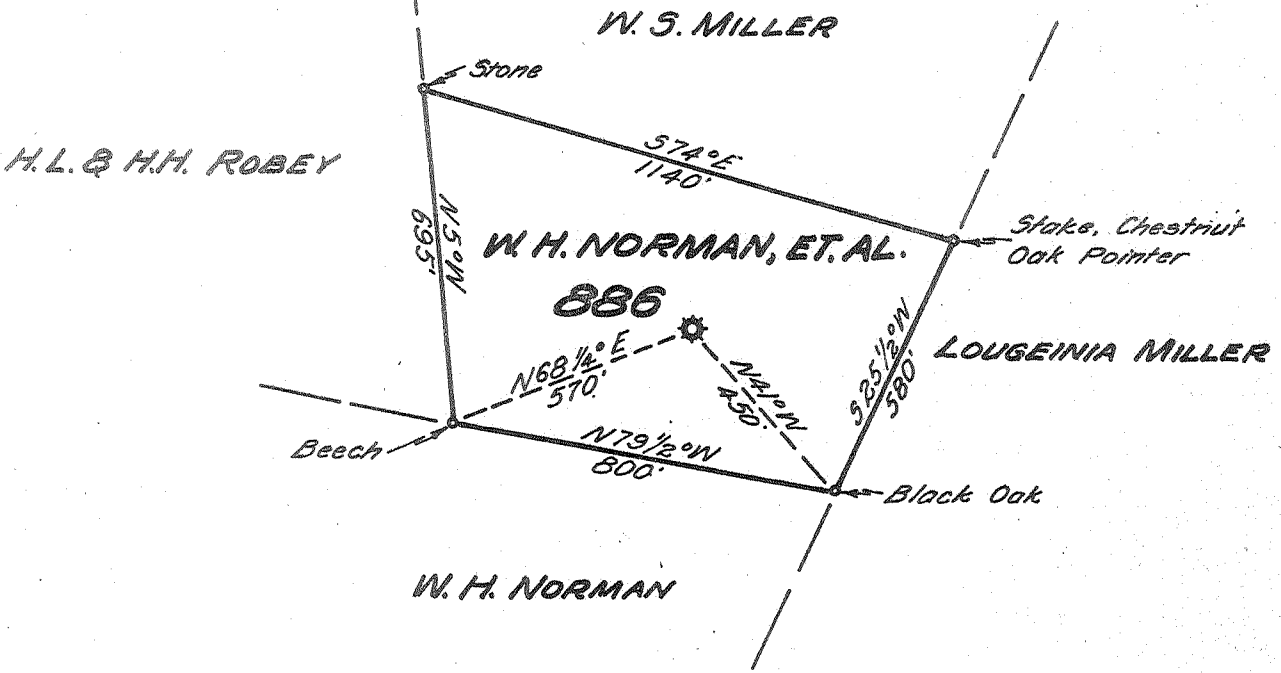


Latitude 38° 50'

Longitude 81° 25'

BRANCH OF LEFT FORK OF REEDY CREEK

385.5
0.02 W



- New Location...
- Drill Deeper.....
- Abandonment.....

Company UNITED FUEL GAS CO.
 Address CHARLESTON, W. VA.
 Farm W.H. NORMAN, ET. AL.
 Tract _____ Acres 12 Lease No. 16501
 Well (Farm) No. _____ Serial No. 886
 Elevation (Spirit Level) 957.0
 Quadrangle SPENCER
 County ROANE District CURTIS
 Engineer Paul E. Joachims
 Engineer's Registration No. 669
 File No. 72-87 Drawing No. _____
 Date 12-28-54 Scale 1" = 400'

STATE OF WEST VIRGINIA
 DEPARTMENT OF MINES
 OIL AND GAS DIVISION
 CHARLESTON

WELL LOCATION MAP
 FILE NO. ROA-918-A

+ Denotes location of well on United States Topographic Maps, scale 1 to 62,500, latitude and longitude lines being represented by border lines as shown.

- Denotes one inch spaces on border line of original tracing.

W. H. NORMAN NO. 1 WELL.

Curtis District, Roane County, W. Va.

By Norman Gas Co.

On 110 (121) acres.

Keller Map H-23.

Elevation.....

Completed Feb. 19, 1916.

Gas well. 25/10 W. in 6 $\frac{3}{8}$ " = 7500 MCF ← SEE MICROFILM FOR WELL RECORD

South Penn map, W. H. and D. Norman No. 1, on 18 acres, S-45 - W-46.

May be on 12 acres; see next sheet (W. H. Norman No. 1, without operator's name).

From Heck's notes.

	Top.	Bottom.
Big line	2022	-
Berea Sand (gas, 2554-2569')	2551	- 2569
Total depth		2569